

NEW BRITAIN
MUSEUM OF
AMERICAN ART

Annual Report

Fiscal Year 2023–2024



4

Message from the
CEO and Board Chair

6

Year in Review

12

Deepening Community Connections

14

Engagement by the Numbers

16

Trustees and Staff

20

Loans and Acquisitions

26

Donors and Members

46

Financials



ON THE COVER →

Anna Valdez's *Pheasant* Connects Four Generations of Women in the Wells Family at the NBMAA

Pheasant was gifted to the Museum by Natasha Dillon and Samantha Dareff, in honor of Natasha's grandmother, Elizabeth Wells.

"It was also important to my wife and me to support a queer woman of color artist, and we really loved that we were supporting her while also supporting the Museum," Natasha says. "We were able to make this gift in honor of my grandmother, who is 100% dedicated and loves being there."



Our thanks to the following NBMAA supporters



StanleyBlack&Decker

Jay and Lorraine
Breuninger Memorial
Fund



Community
Foundation
of Greater New Britain

Connecticut
Department of Economic and
Community Development
Office Of The Arts



cThumanities wshu | Public Radio

Dear Friends,

We have seen great advances for the Museum this past year. It has been astonishing to witness all we have been able to accomplish together as a small staff and a committed community of supporters. We set particularly ambitious goals for ourselves over the past 12 months. As a result, we have pushed and tested this institution's capacity for growth and excellence, and we have succeeded in achieving historic levels of accomplishment. This success is a testament to everyone's hard work.

At a programmatic level, that took shape as a dynamic series of exhibitions and social programs that appealed to a broad audience and succeeded in attracting substantial investment in contributed income. In fact, the Museum doubled its FY23 special exhibition income, surpassing even our aspirational FY24 goal on that line. Income as a whole for FY24 set a new high for the institution, exceeding even the most popular year on record during which we presented the O'Keeffe show. While our content was a driver in this success, the achievement is also due to thoughtful re-positioning of our activities across the board to better meet market conditions and a bold spirit of aspiration embraced by staff at all levels in the conduct of their work.

The year of exhibitions began with *From the Vault*, a presentation of our own impressive collection of contemporary art, showcasing works rarely seen, and a continuation of family-friendly blockbuster *Walter Wick: Hidden Wonders!* Soon after, all were captivated by Ellen Carey's stunning work in *Struck*

by *Light*. Mesmerized visitors captured selfies and practiced yoga beneath Anila Agha's monumental light installation, *Intersections*. And history enthusiasts traveled from far and wide to explore *Women Reframe American Landscape*, highlighting Susie Barstow and her contemporaries.

Most recently, we celebrated Indigenous heritage and contemporary vision in the landmark exhibition *The Land Carries Our Ancestors: Contemporary Art by Native Americans*, in partnership with the National Gallery. Justin Favela's playful murals and response pieces beautifully connected American art history with his Latin American roots. Through a planned series of three exhibitions, we also explored the exquisite Shaker craftsmanship from the past 175 years, learning about the Shakers' aesthetic influence on generations of designers. This included an introduction to artist Barbara Prey and her monumental watercolors.

By all measures, this exhibition program has been a great success: Memberships have remained strong despite our cessation of a concerted membership campaign; general admission holds steady at pre-pandemic figures; and programming attendance has been steadily increasing.

As we move into FY25, partnerships forged this past year will continue to yield dividends, with important works coming on loan to activate our permanent collection galleries from the Whitney Museum of American Art, the Museum of Modern Art, and National Gallery of Art.

The Museum's acquisition program has likewise advanced significantly over the last 12 months. This includes a major Helen Frankenthaler painting that marks one of the most significant gifts that the Museum has ever received, and a major group of Walter Wick prints, establishing the Museum as the nation's premiere repository of his incredibly popular creative legacy.

We were equally fortunate to usher in key additions to our leadership team this year: Debra Holcomb as our new Director of Development, Stephanie Heydt as Director of Collections and Exhibitions, and Emily Dunnack as Director of Learning & Engagement.

Our Museum also established a successful rhythm with new monthly Access for All community days. Thanks to a generous three-year \$400,000 Art Bridges Access for All grant, we've been able to offer themed engagement opportunities. Since January 2024, we've welcomed more than 4,000 visitors to these free admission days. Be sure to subscribe to our weekly emails on our website and follow us on social media for announcements about upcoming Access for All events.

In an unexpected twist, our 21st Annual Art Party of the Year transformed into the Mini Art Party, honoring Trustee Emeritus David Polk. This celebration recognized 120 years of art collecting at the Museum, beginning with John Butler Talcott's seminal gift, and drew inspiration from *Ellen Carey: Struck by Light*. The event was a joyful gathering that generated important funds for the Museum.

A standout moment of the year was the launching of a master planning process to establish a Campus Vision Plan for our future, which outlines our ambitious vision for the Museum's campus over the next 15 years. Thank you to everyone who contributed to this important dialogue during the surveying stage. We're thrilled with the resulting design proposals, which aim to enhance the visitor experience and elevate the Museum's national reputation.

In summary, the year was full of extraordinary achievements that will lay a path for our vibrant future. Achievements that in many cases are

landmark moments: from the largest programmatic grant in our history, to the acquisition of a masterwork painting, a show from the National Gallery, the establishment of a curatorial director, the highest total incomes on record for the institution, and a master plan for our campus that will serve as a roadmap for our long-range future. To have achieved any one of these in a year would represent a leap forward; to have achieved all of them in a 12-month period is a sign of an exceptionally healthy and ambitious Museum with a bright future.

We look forward to our continued success together as we forge an exciting future for this great organization.

Warm regards,



BRETT ABBOTT
Executive Director & CEO



PETER YU, MD
Chair of the Board of Trustees



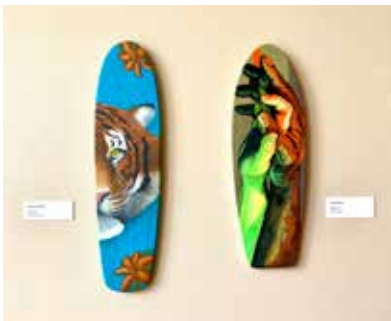
Year in Review

2023-24



ELLEN CAREY: STRUCK BY LIGHT ↑

Since the early 1990s, acclaimed Hartford-based artist Ellen Carey has created experimental and abstract works that defy photographic conventions. *Ellen Carey: Struck by Light* represented the largest retrospective of Carey's innovative photo-objects and lens-based artworks in a decade.



NBMAA STAFF SKATEBOARD SHOW

Museum staff created original artworks using wooden skateboard forms. All staff members were invited to submit original artwork for the show using any medium of their choice. The finished skateboards were displayed in the Museum Café, where visitors could vote for their favorite.



ELIZABETH GOURLAY: COLOR, CHORDS, AND THREADS

Throughout its history, the New Britain Museum of American Art has celebrated regional artists who contribute invaluable to the creative ecosystem of our community and beyond. The NBMAA was proud to present Chester-based artist Elizabeth Gourlay as the subject of the Delamar West Hartford's exhibition *Elizabeth Gourlay: Color, Chords, and Threads*, which featured over a decade of work by the artist.

MASTERWORKS OF SHAKER DESIGN: MOUNT LEBANON, NY

Masterworks of Shaker Design: Mount Lebanon, NY, was the second in a planned series of exhibitions at the NBMAA designed to highlight examples of the finest Shaker craftsmanship from the past 175 years. The Shaker community of Mount Lebanon, NY, was the first Shaker community to be “gathered into order.” Curated by M. Stephen Miller, this exhibition explored the first fully organized village dedicated to the principles of Shakerism and the exceptional furniture, woodenware, and objects they produced.



COMMUNITY EXHIBITION: CCARC

The NBMAA was honored to present artwork in the Museum Café created by members of the CCARC community. Founded in 1952 as a not-for-profit organization, CCARC INC. has been dedicated to providing an array of adult day, employment support, and residential services within the community to support individuals with intellectual and developmental disabilities (IDD).



NOR'EASTER: THE 53RD ANNUAL JURIED MEMBERS EXHIBITION

Nor'Easter is the NBMAA's opportunity to showcase contemporary visual arts from the region. This prominent show highlights the exceptional work of emerging artists in all media. In 2023, the juror was Fritz Horstman; Fritz is a curator, educator, and artist based on Bethany, CT, where he is also Education Director at the Josef and Anni Albers Foundation.



MODERN TIMES: 1920s–1950s

Two distinct styles dominated American art in the first half of the 20th century: Modernist abstraction, which emphasized the dynamism of line, color, and form; and American Scene Painting, which favored naturalistic depictions of people and places. Drawn from the NBMAA's permanent collection, *Modern Times: 1920s–1950s* explored the art and artists associated with these unique styles.





NEW/NOW ANILA QUAYYUM AGHA: ILLUMINATIONS ↑

This dazzling, immersive *NEW/NOW* exhibition featured the work of Anila Quayyum Agha, an internationally celebrated artist who explores the complexities and contradictions of her experience as a Pakistani immigrant to the United States through monumental installations and intimate paintings and drawings. This exhibition featured her iconic light sculpture *Intersections in concert* with new paintings and works on paper.



WOMEN REFRAME AMERICAN LANDSCAPE

Illuminating the contributions and perspectives of women artists, *Women Reframe American Landscape* included the first retrospective of the nineteenth-century American artist Susie M. Barstow (1836-1923) and a presentation of works by contemporary artists. Organized by the Thomas Cole National Historic Site in partnership with the NBMAA, this exhibition recentered women in the canon of American art and expanded how we think about land and landscape.

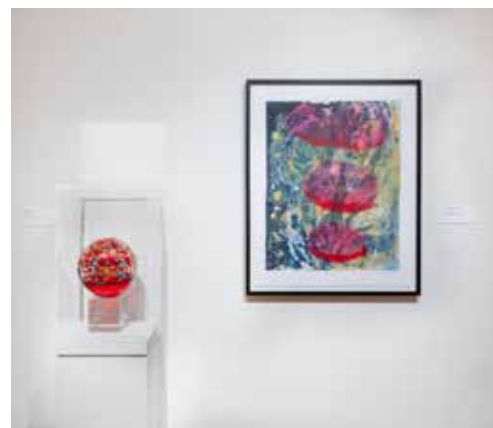


RICHARD CLAUDE ZIEMANN: IN NATURE

Atmospheric and evocative, Richard Claude Ziemann's works on paper and paintings draw inspiration from the natural environments of Connecticut and beyond. For nearly seven decades, Ziemann has captured the texture and sensations of forests, fields, and waterways with delicate devotion. The New Britain Museum of American Art celebrated the artist's tremendous artistic accomplishments in a survey exhibition entitled *Richard Claude Ziemann: In Nature*, featuring etchings, drawings, and paintings spanning over 50 years.

GLASS IMPRESSIONS: VITREOGRAPHS AND STUDIO GLASS FROM THE COLLECTION

Glass Impressions celebrates the dynamic sculptural and pictorial dimensions of glass. Drawn largely from the permanent collection, the exhibition pairs vitreographs—prints produced with a glass plate—with contemporary studio glass. Dazzling in color and dynamic in composition, these vibrant works demonstrate the experimental and cutting-edge approaches that contemporary artists and glassmakers have applied to this timeless material in recent decades.



JUSTIN FAVELA: DO YOU SEE WHAT I SEE? ↑

Brilliant colors, tissue paper, cardboard, and untold stories converge in *Do You See What I See?* featuring works by Las Vegas-based artist Justin Favela. Nestled throughout the galleries, this exhibition is an exploration of the artist's quest to see himself and the vibrant Latinx community represented within the Museum's esteemed collection.

HANDLED WITH CARE: SHAKER MASTER CRAFTS AND THE ART OF BARBARA PREY

A collaboration between Hancock Shaker Village and the New Britain Museum of American Art, *HANDLED WITH CARE* featured six large-scale watercolor paintings by world-renowned contemporary artist Barbara Ernst Prey paired with examples of the Shakers' finely crafted, beautifully preserved small crafts.





THE LAND CARRIES OUR ANCESTORS: CONTEMPORARY ART BY NATIVE AMERICANS ↑

Organized by National Gallery of Art, Washington, D.C., and curated by artist Jaune Quick-to-See Smith (Citizen of the Confederated Salish and Kootenai Nation), *The Land Carries Our Ancestors* highlighted artworks by nearly 50 living Native artists that powerfully visualize Indigenous culture and knowledge of the land. Brought together by Smith, this multigenerational, diverse group of artists works across the United States and spans a range of artistic practices. Their means of making reflects the diversity of Native expression according to individual, regional, and cultural identities. At the same time, these works share a worldview informed by a reverence and concern for the land.



ARTISTS' SPECTRUM: THE DOCENT ART SHOW

This delightful exhibition highlighted the works of 17 Museum Docents working in a wide spectrum of genres, materials, and styles. NBMAA Docents share a love of American art with visitors from around the world, and this installation allowed them to share their own art with us all.



WONDER STORIES: PULP ART ILLUSTRATION FROM THE NBMAA COLLECTION

The Museum's celebrated collection of Pulp Art illustration was on view at the NBMAA and the Delamar Hotel in West Hartford, in a two-part exhibition highlighting the compelling narrative imagery depicted by artists of this genre. *WONDER STORIES* presented a selection of pulp masterworks from various genres. The imagery featured was a testament to the compelling narrative of the stories, as well as the imaginations of the artists, who transformed words into fantastical images.



ELIZABETH GOURLAY: A TRIBUTE

Spanning nearly fifteen years of creative expression, *Elizabeth Gourlay: A Tribute* commemorated the visionary work and life of Chester, Connecticut-based artist Elizabeth Gourlay (1961–2024). At once delicate and bold, Gourlay's compositions reveal the artist's lifelong exploration into the emotive and abstract qualities of line, color, and form in their myriad permutations. Her highly personal works are meditations on architecture, music, textiles, and Gourlay's experiences in the world and across cultures.

NEW GIFTS

The New Britain Museum of American Art was thrilled to announce works by artists Walter Wick, Thornton Dial, William Glackens have been gifted to the Museum.

A gift from Walter and Linda Wick of **29 pigmented inkjet photographs and 12 models by Walter Wick** join our substantial collection of work by Wick, making the NBMAA the most significant repository of his work.

Two assemblage paintings by Thornton Dial have also been added to the permanent collection. Together, *Stuck in the Mud* (1994, gift of Mr. and Mrs. Baxter P. Jones) and *Auntie* (2012) represent the range of this important Southern self-taught artist's career.

William James Glackens, *The Arbor, Hartford*, has also been recently gifted to the Museum by Stan Dimock.



ENGAGING THE COMMUNITY THROUGH ACCESS FOR ALL

Thanks to generous support provided by Art Bridges Foundation's Access for All program, visitors can now enjoy Free Admission all day once a month. Since the start of the program in January 2024, we have welcomed more than 4,000 visitors during these Access for All Community Days, which feature artmaking, performances from local creatives, and family-friendly activities in the studios and galleries.



SOCIAL PROGRAMS AND RENTALS

The Museum serves as a cultural hub drawing new and wider audiences to enjoy social events and music programs, including First Friday, Museum After Dark, Art Happy Hour, Craft Sippin' in New Britain, and Sunday Music Series. Also, the community has activated the Museum space for private events—such as weddings, memorial services, and private parties—with a total of 62 facility rentals this year that welcomed 3,336 guests to the Museum.





Deepening Community Connections

Art Bridges
Foundation

ACCESS
FOR ALL

Access for All Community Days allow visitors to enjoy Free Admission all day once a month, thanks to generous support provided by Art Bridges Foundation's Access for All program. Throughout the year, we have continued to deepen our community connections by collaborating with local artists and engaging our neighbors to present Community Days filled with live music, performances, art activities, and local vendors.

This year, the Museum collaborated with the following local organizations, artists, and vendors:

Organizations

CT Center for Nonviolence
Dejavé Dance
Queen Anne Nzinga Center
Hartford Dance Collective
Asian Performing Arts
Pekiti Tirsia Kali Elite
New Britain Parks and Recs
City of New Britain
NB Public Library
First Group bus
NB Democratic Town Committee
The Afro Caribbean Cultural Center
Asian American and Pacific Islander Studies, CCSU
Asian Pacific American Coalition of CT
Latin American, Latino, and Caribbean Center
Central Connecticut State University
YWCA
OIC
Berlin HS
HALS Academy
CT Arts for Learning
Japan Society of Greater Hartford
NB Pride

Performers

Gamalia Moses
Ms. Gina LeVon Simpson
Adjovi Simpini
Goza Brazilian Band
Nzinga's Daughter
Stephen Long
Suhail Yusuf Khan
Henry Hodder
Alvin Carter
Briana Maia
DJ MDot
Dr Evelyn Phillips
June Archer
Midnight
PoeticSOULdier
Rasheem Terry
Tang Sauce
Ysanne Music Team
Tom Lee
Art league of new Britain
Gallery 66
Tere Luna
Sirius Coyote
Carlos Boltes

Visual Artists

Shanna T. Melton
Ron Jean-Gilles
Mary F. LaChappelle
Meredith Arcari
Joan Shackford
John Hitchcock
Woon Choi
Victor Tellez
Letty Rodriguez
Pallavi Daggumati
Pranav Ghatraju
Rob Santos
Roxanne Savage
Frankie Baez
Joe Tsatsu
Michele Fischer Paul
Kendall Soliwoda
Margaret Wilson
James D'Amore
Eddie Hall
Clinton Deckert
Mark Tegtmeier
Sarah Grote

Vendors

Russel's Grab & Go
Refresh Food & Drink
2 Gurlz Inc
Mad Tents
Seaside Creamery
Bigalow Catering
Creative Cards by Vicki
Royal Lifestyle clothing
African Attire
African Adornments
Black Vintage Pop-Up & Black HisTory Shirts
Tafika Arts
Cecilia Imports
Kyra Morris Beauty
Aspenne's library
Sandy's Bead Collection
Jodi Cup of Health, LLC
A Bar for Your Thoughts



Engagement by the Numbers



23,109

Visitors attended programs at the Museum



202,000

Website users



Social reach

1.8M

people



49,147

Total number of visitors (general admission, programs, and social)

SCHOOL SERVICES AND ADULT PROGRAMS



1,875

Participants in adult programs, including lectures, gallery talks, wellness programs, and studio classes



1,916

College student and adult groups on guided and self-guided tours of the Museum



9,499

Elementary and high school students on guided and self-guided tours of the Museum

COMMUNITY AND FAMILY PROGRAMS



4,330

Visitors joined us for Access for All Community Days



700+

Children and families attended children's classes



166

Educators participated in Teacher Professional Development days



JUNE 14, 2024
Director's Dinner

Trustees and Staff

Board of Trustees

EXECUTIVE COMMITTEE

Peter Yu, MD, *Chair*
John (Jay) Bombara,
Vice Chair
Claudia Thesing, Ph.D,
Secretary
Kenneth Boudreau, *Treasurer*
Dona V. Cassella,
Immediate Past Chair
David Jepson, *At Large*
John Jezowski, *At Large*
Gary Knoble, *At Large*
John Wheat, *At Large*

TRUSTEES

Arnold Amstutz
Marenda Brown-Stitzer
Russell E. Burke III
Gail Byeff
Cynthia Cooper
Jack Corroon

Mary Jane (MJ) Dunn
Neal Freuden
Lisa Lazarus
Thomas Mach
Michele Parrotta
René Rosado
Donna Stout
Albert Tomasso
Susan Warner, Sc.D
Tania P. Weiss

HONORARY TRUSTEES

Mrs. Joan Baekeland
Alyce Fuller
Charles and Irene Hamm
The Honorable Nancy
Johnson and Dr. Theodore
Johnson
Nelson H. White
Mayor Erin Stewart

TRUSTEE EMERITI

Samuel Bailey, Jr.
Timothy Bergstrom
Barbara Bradbury-Pape
Peter Byeff
Kenneth J. Carifa
Rhoda L. Chase
William Chase
Kay Knight Clarke
Dr. Martin Cooper
Brendan T. Conry
Kathryn Cox
Anita Ferrante
Thomas C. Flanigan
Dr. Marie S. Gustin
John N. Howard
R. Alan Hunter
Dr. Richard L. Judd
Coleman B. Levy
Brenda Manning

Virginia J. McKernan
Dr. Timothy McLaughlin
Dr. M. Stephen Miller
Janet L. Myers
Gloria Oviedo
John J. Patrick Jr.
David Polk
John R. Rathgeber
Susan Rathgeber
Hal Rives
Thomas Soyster
Todd Stitzer
Melinda Sullivan
Linda Powers Tomasso, Ph.D
Lindsley Wellman
Kathryn West
Linda Cheverton-Wick
Kimberly Zeytoonjian

Douglas Hyland,
Director Emeritus

Committee Appointments

EXECUTIVE COMMITTEE

TRUSTEES

Peter Yu, MD, *Chair*
John (Jay) Bombara,
Vice Chair
Claudia Thesing, Ph.D,
Secretary
Kenneth Boudreau, *Treasurer*
Dona V. Cassella,
Immediate Past Chair
David Jepson, *At Large*
John Jezowski, *At Large*
Gary Knoble, *At Large*
John Wheat, *At Large*

STAFF

Brett Abbott,
Director and CEO

FINANCE AND AUDIT COMMITTEE

TRUSTEES

Kenneth Boudreau, *Chair*
Arnold Amstutz
John (Jay) Bombara
Dona V. Cassella,
Immediate Past Chair
Jack Corroon
Joseph Del Mastro
Albert Tomasso
Peter Yu, MD, *ex officio*

EMERITI

Kay Knight Clarke
John Rathgeber

STAFF

Brett Abbott,
Director and CEO
Joanne Humen,
*Director of Business
Administration*
Debra Holcomb,
Director of Development

COLLECTIONS COMMITTEE

TRUSTEES

Gary Knoble, *Chair*
John (Jay) Bombara
Russell E. Burke III
Dona V. Cassella,
Immediate Past Chair
Cynthia Cooper
Mary Jane (MJ) Dunn
Lisa Lazarus
Michele Parrotta
René Rosado
Marenda Brown-Stitzer
Donna Stout
Tania Weiss
John Wheat
Peter Yu, MD, *ex officio*

EMERITI

Kenneth J. Carifa
Kay Knight Clarke
Anita Ferrante
Brenda Manning
M. Stephen Miller
Thomas Soyster
Lindsley Wellman

MUSEUM MEMBERS

Susan Hight

STAFF

Brett Abbott,
Director and CEO
Keith Gervase,
Manager of Collections
Stephanie Heydt,
*Director of Collections
and Exhibitions*
Lisa Hayes Williams,
*Curator and Head
of Exhibitions*

LOW ILLUSTRATION COMMITTEE

TRUSTEES

Gary Knoble, *Chair*
Dona V. Cassella,
Immediate Past Chair
Peter Yu, MD, *ex-officio*

EMERITI

Thomas Soyster
Lindsley Wellman

MUSEUM MEMBERS

Scott Bakal
Leslie Cober-Gentry
Cora Lynn Deibler
Vincent DiFate
Leonard Everett Fisher
Terri Goldich
Rebecca Leveille-Guay
Wendell Minor
Roger Reed
Jack Tom
Eric Velasquez
John Witt

STAFF

Brett Abbott,
Director and CEO
Keith Gervase,
Manager of Collections
Stephanie Heydt,
Director of Collections
and Exhibitions
Lisa Hayes Williams,
Curator and Head
of Exhibitions

DEVELOPMENT COMMITTEE

TRUSTEES

Claudia Thesing, Ph.D, *Chair*
Gail Byeff
Dona V. Cassella,
Immediate Past Chair
Lisa Lazarus
Donna Stout
Susan Austin Warner, Sc.D
Tania Weiss
Peter Yu, MD, *ex-officio*

EMERITI

Susan Rathgeber

STAFF

Brett Abbott,
Director and CEO
Debra Holcomb,
Director of Development
Amanda Shuman-Bisson,
Associate Director
of Development

EDUCATION COMMITTEE

TRUSTEES

René Rosado, *Chair*
Dona V. Cassella,
Immediate Past Chair
Peter Yu, MD, *ex-officio*

EMERITI

David Polk

STAFF

Brett Abbott,
Director and CEO
Emily Dunnack,
Director of Learning
and Engagement

FACILITIES COMMITTEE

TRUSTEES

David Jepson, *Chair*
Kenneth Boudreau, *Vice Chair*
John (Jay) Bombara
Dona V. Cassella,
Immediate Past Chair
Neal Freuden
Thomas Mach
Albert Tomasso
Peter Yu, MD, *ex-officio*

EMERITI

Kenneth J. Carifa
John N. Howard

MUSEUM MEMBERS

Scott Celella
Chip Eveleth
Richard Dighello

STAFF

Brett Abbott,
Director and CEO
Adam Alvarado,
Manager of Facilities
and Security

INVESTMENT COMMITTEE

TRUSTEES

John Jezowski, *Chair*
Arnold Amstutz
John (Jay) Bombara
Kenneth Boudreau
Jack Corroon
Mary Jane (MJ) Dunn
Peter Yu, MD, *ex-officio*

EMERITI

Brendan Conry
William Chase
John N. Howard
Hal Rives
Todd Stitzer

STAFF

Brett Abbott,
Director and CEO
Joanne Humen,
Director of Business
Administration

NOMINATING COMMITTEE

TRUSTEES

Dona V. Cassella, *Chair*
René Rosado
Claudia Thesing, Ph.D
John Wheat
Peter Yu, MD, *ex-officio*

EMERITI

David Polk

STAFF

Brett Abbott,
Director and CEO
Debra Holcomb,
Director of Development

Our Dedicated Staff

AS OF JULY 1, 2024

MANAGEMENT & ADMINISTRATION

Brett Abbott
Director and CEO

Marianne Orzechowski
Executive Assistant to the Director

CURATORIAL

Stephanie Heydt #
Director of Collections and Exhibitions

Lisa Williams
Curator and Head of Exhibitions

COLLECTIONS

Keith Gervase
Collections Manager

Michael Mindera
Associate Preparator

Erica San Soucie
Associate Registrar

DEVELOPMENT

Debra Holcomb #
Director of Development

Claudia Thesing +
Interim Director of Development

Amanda Shuman-Bisson
Associate Director of Development

Jenna Lucas
Development and Membership Coordinator

Amy Morgan #
Development Communications and Events Assistant

Alexis Zimmerman +
Development Associate

FINANCE

Joanne Humen +
Director of Business Administration

Suzanne Wallach
Senior Manager of Accounting

MARKETING

Lisa Lappe
Director of Communication & Visitor Experience

Elizabeth Lamont
Senior Marketing Coordinator

Sara Georgas +
Graphic Designer

EDUCATION

Emily Dunnack #
Director of Learning and Engagement

Kathleen Butler +
Interim Director of Education

Francis Estrada #
Senior Manager of Community Engagement and Family Programs

Stephanie Strucaly +
Curator of Youth Studio and Family Programs

Nicole Hooks
Adult Education Programs Manager

Gabrielle Gaulin #
Coordinator of Children's and School Services

Jasmine DeJackome +
Manager of School Services and Adult Tour Programs

Angel Bleggi #
Manager of Art Studio Education

Sommer Byers +
Assistant Museum Educator

Meagyn Saffo-Darko *
Education Intern

FACILITY & SECURITY

Adam Alvarado
Head of Facilities and Security

Christian Torres
Facilities and Security Assistant Manager

Angela Godoy
Lead Security Guard

Evan William Abramczyk #
Security

Cory Carlone
Security

Tamhja Coe
Security

Joshua Hubert
Security

Raymond Lewis III
Security

Axel Julian Robledo Amill
Security

Robert Nevers +
Security

Phillip Penna +
Security

Andriy Shuter
Facilities Specialist

VISITOR SERVICES

Colleen Mitchell
Manager of Visitor and Volunteer Services

Leanna Guthrie
Event & Hospitality Manager

Daisy Gesualdi
Visitor Services Shift Lead and Program Specialist

Michaela Gorski
Visitor Services Shift Lead and Resource Specialist

Chelsea Marti
Visitor Services Technology Lead

Jordan Alexandre #
Visitor Services Sales Associate

Kristine Cropper-Alt
Visitor Services Sales Associate

Tess Crystal #
Visitor Services Sales Associate

Nelson Rivera Jr. #
Visitor Services Sales Associate

Rashmi Talpade
Visitor Services Sales Associate

Samuel Farrell +
Visitor Services Sales Associate

Barbara Hawes +
Visitor Services Sales Associate

CAFÉ

Sarah Nguyen
Café Associate

MUSEUM STORE

Laura Van Dine
Store Manager

Lucinda Armillei
Store Sales Associate

Gabby Butler #
Store Sales Associate

Jill Marie Jamgochian
Store Sales Associate

Meghan Riedel #
Store Sales Associate

Andrea Easton +
Store Sales Associate

Jennifer Wong +
Store Sales Associate

Joined during FY 2024

+ Left during FY 2024

* We are grateful to the American Savings Foundation for generously providing funding for these internships.



Loans and Acquisitions

Outgoing Exhibition Loans

TOTAL WORKS SENT ON LOAN: 12 OBJECTS, 8 BORROWING INSTITUTIONS,
6 STATES, 8 CITIES

Cape Ann Museum, Gloucester, MA

Edward Hopper & Cape Ann:

Creating an American Landscape

July 22, 2023–October 16, 2023

Edward Hopper (1882–1967)

Abbot's House, ca. 1926

Watercolor on woven paper

14 x 20 in.

Harriet Russell Stanley Fund, 1946.19

Art Institute of Chicago, Chicago, Illinois

Georgia O'Keeffe: "My New Yorks"

June 2, 2024–September 22, 2024

Art Institute of Chicago

Georgia O'Keeffe (1887–1986)

East River from the 30th Story of Shelton Hotel, 1928

Oil on canvas

Stephen B. Lawrence Fund, 1958.09

Shelburne Museum, Shelburne, Vermont

All Aboard, The Railroad in American Art,

1840–1955

June 22, 2024–October 20, 2024,

Shelburne Museum

Kay Sage (1898 – 1963)

Unusual Thursday, 1951

Oil on canvas

Gift of Mrs. Naum Gabo, 1978.90

American Folk Art Museum, New York (Organizer)

Unnamed Figures: Black Presence and Absence

in Early American Vernacular Art

American Folk Art Museum, New York

November 12, 2023–March 24, 2024

Historic Deerfield, Deerfield, Massachusetts

March 28, 2024–August 30, 2024

Ralph Earl (1751–1801)

Gentleman with Attendant, c. 1790

Oil on canvas

Harriet Russell Stanley Fund, 1948.6

Mattatuck Museum, Waterbury, Connecticut

(Re)Work It! Women Artists on Women's Labor

January 21, 2024–May 19, 2024

Jennifer Knaus (b. 1962)

Legs, 2000

Oil on linen

Gift of the Artist, 2001.13

Nina Bentley (b. 1939)

Corporate Executive Wife's Service Award Bracelet, 1999

sculpture; Assemblage sculpture, plated silver

Gift of Jennifer Bentley, 2001.32

Judith Thorpe (b. 1951)

Aphrodite #1, 2012

Inkjet print on Epson exhibition fiber paper

Gift of the artist, 2012.99

Judith O'Rourke (b. 1960)

Puberty, 1996

Vitreograph print from glass plates

Gift of Judith O'Rourke, 2014.10.78

Tatyana Kulida (b. 1981)

Her Gift to the World – Motherhood, 2013

Oil on linen

Gift of the artist, 2015.160

Lyman Allyn Art Museum, New London, Connecticut

Beatrice Cuming: Connecticut Precisionist

February 24, 2024–May 26, 2024

The exhibition will be accompanied by a catalogue.

Beatrice Cuming (1903–1975)

Welders at Electric Boat Company, c. 1944

Oil on canvas

Charles F. Smith Fund, 1972.01

Heritage Museums & Gardens, Sandwich, Massachusetts

Impressionist New England: Four Seasons of Color and Light

April 20–October 20, 2024

Willard Metcalf (1858–1925)

November Mosaic, 1922

Oil on canvas

John Butler Talcott Fund, 1925.01

Childe Hassam (1859–1935)

Rigger's Shop, Provincetown, MA, 1900

Oil on canvas

Gift of Mr. and Mrs. J. Lawrence Pond, 1976.98

Acquisitions



AMANDA MEANS (b. 1952)
Light Bulb 00032C, 2001
 Polaroid
 26 × 30 ¾ in. (66 × 78.1 cm)
 Gift of Ellen Carey, 2023.12.1

JOE FIG (b. 1968)
Ellen Carey: May 19, 2014, 2014
 Mixed media
 17 × 17 × 9 ¾ in. (43.2 × 43.2 × 24.8 cm)
 Gift of Ellen Carey, 2023.12.2

ELLEN CAREY (b. 1952)
Dings & Shadows, 2013
 20 Color positive c print photograms
 Overall: 96 × 100 in. (243.8 × 254 cm)
 William and Bette Batchelor Memorial
 Acquisition Fund, 2023.12.3

ELLEN CAREY (b. 1952)
Pull & Rollback, 2002
 Polaroid color print
 Frame: 64 ½ × 25 ½ in. (163.8 × 64.8 cm)
 Gift of Linda Cheverton Wick and
 Walter Wick, 2023.13

BROTHER PHILEMON STEWART
 (1833–1864)
**A Holy, Sacred and Divine Roll and Book;
 From the Lord in Heaven**, 1843
 Shaker printed book
 8 ½ × 5 × 1 ½ in. (21.6 × 12.7 × 3.8 cm)
 Gift of Rev. Dr. Davida Foy Crabtree,
 2023.14

← **HELEN FRANKENTHALER**
 (1928–2011)
Estuary, 1981
 Acrylic on canvas
 57 ¾ × 54 ½ in. (146.7 × 138.4 cm)
 Gift of the Helen Frankenthaler
 Foundation, 2023.15

JOHN WESLEY JARVIS (1780–1839)
Lewis Hotchkiss, 1807
 Graphite and watercolor
 3 ½ × 2 ½ in. (8.9 × 6.4 cm)
 Gift of Frances English Reynolds,
 2023.16.1

JOHN WESLEY JARVIS (1780–1839)
Possibly Hannah Lewis Hotchkiss, 1807
 Graphite and watercolor
 3 ½ × 2 ½ in. (8.9 × 6.4 cm)
 Gift of Frances English Reynolds,
 2023.16.2

JOHN WESLEY JARVIS (1780–1839)
Hannah Frances Hotchkiss, 1807
 Graphite and watercolor
 3 ½ × 2 ½ in. (8.9 × 6.4 cm)
 Gift of Frances English Reynolds,
 2023.16.3

JOHN WESLEY JARVIS (1780–1839)
Possibly Dr. Obadiah Hotchkiss, 1807
 Graphite and Watercolor
 3 ½ × 2 ½ in. (8.9 × 6.4 cm)
 Gift of Frances English Reynolds,
 2023.16.4

JOHN WESLEY JARVIS (1780–1839)
Silas Hotchkiss, 1807
 Graphite and watercolor
 Sheet: 3 ½ × 2 ½ in. (8.9 × 6.4 cm)
 Gift of Frances English Reynolds,
 2023.16.5

JOHN FALCONER (1820–1903)
Negro Huts, Wilmington, N.C., 1880
 Etching
 8 ½ × 12 in. (21.6 × 30.5 cm)
 Gift of Alice and Douglas Hyland,
 2023.17.1

PETER MORAN (1841–1914)
Noonday Rest, 1877
 Etching
 8 × 11 in. (20.3 × 27.9 cm)
 Gift of Alice and Douglas Hyland, in
 honor of Keith Gervase, 2023.17.2

STEPHEN J FERRIS (1835–1915)
Devil's Way, Algiers, 1879
Etching
12 × 8 ½ in. (30.5 × 21.6 cm)
Gift of Alice and Douglas Hyland,
2023.17.3

JOSEPH FOXCROFT COLE (1837–1892)
Village Street in France, 1866
Etching
8 ½ × 12 in. (21.6 × 30.5 cm)
Gift of Alice and Douglas Hyland,
2023.17.4

ALBERT FITCH BELLOWES (1829–1883)
Mill Pond at Windsor, Conn., 1879
Etching
8 ½ × 12 in. (21.6 × 30.5 cm)
Gift of Alice and Douglas Hyland, in
honor of Chris Shivery, 2023.17.5

ALFRED BRENNAN (1853–1921)
Divination in Tea Leaves, 1879
Etching
12 × 8 ½ in. (30.5 × 21.6 cm)
Gift of Alice and Douglas Hyland,
2023.17.6

SAMUEL COLMAN (1832–1920)
Durham, England, 1880
Etching
8 ½ × 12 in. (21.6 × 30.5 cm)
Gift of Alice and Douglas Hyland, in
honor of Russell Burke, 2023.17.7

R. SWAIN GIFFORD (1840–1905)
Coal Pockets at New Bedford, Mass., 1879
Etching
12 × 8 ½ in. (30.5 × 21.6 cm)
Gift of Alice and Douglas Hyland, in
honor of David Polk, 2023.17.8

IGNATZ MARCEL GAUGENGIGL
(1855–1932)
Untitled (Woman Putting on Gloves),
1879
Etching
12 × 8 ½ in. (30.5 × 21.6 cm)
Gift of Alice and Douglas Hyland,
2023.17.9

RICHARD BENSON (1943–2017)
*Photographs from the Collection of
the Gilman Paper Company*, 1985
200 photo offset lithographs printed on
white wove paper, bound in book
18 7/8 × 16 5/16 × 3 5/16 in.
(47.9 × 41.4 × 10 cm)
Gift of William R. Peelle Jr., 2024.1

UNKNOWN SHAKER ARTIST
Round Cheese Box, Enfield Connecticut,
1885 1895
Maple, pine, iron, copper
Diameter: 6 ¾ × 11 ½ in. (17.1 × 29.2 cm)
Gift of Dennis Paustenbach, 2024.2

THORNTON DIAL SR. (1928–2016)
Stuck in the Mud, 1994
Mixed media [oil paint, metal, wood,
plastic, twig, fabric, carpet fragments]
36 ¼ × 42 ½ in. (92.1 × 108 cm)
Gift of Mr. and Mrs. Baxter P. Jones,
2024.3

THORNTON DIAL SR. (1928–2016)
Auntie, 2012
Mixed media [paint, plastic flowers
petals, denim, quilt and fabric fragments,
branches and sticks, metal sheets]
36 × 60 in. (91.4 × 152.4 cm)
Museum purchase with Member's
Purchase and Luda S. Piecka Funds,
2024.4

↓ **WALTER WICK** (b. 1953)
Space Station Impossible
from Can You See What I See?
Hidden Wonders, 2021
Pigmented inkjet photograph
Frame: 39 × 58 ½ in. (99.1 × 148.6 cm)
Gift of Walter Wick and Linda
Cheverton Wick, 2024.5.1

WALTER WICK (b. 1953)
*Wacky Workshop from Can You See
What I See? Hidden Wonders*, 2021
Pigmented inkjet photograph
Frame: 39 × 58 ½ in. (99.1 × 148.6 cm)
Gift of Walter Wick and Linda
Cheverton Wick, 2024.5.2

WALTER WICK (b. 1953)
*Flatland from Can You See What
I See? Hidden Wonders*, 2021
Pigmented inkjet photograph
Frame: 39 × 58 ½ in. (99.1 × 148.6 cm)
Gift of Walter Wick and Linda
Cheverton Wick, 2024.5.3

WALTER WICK (b. 1953)
Junk Robot from Hey, Seymour!, 2015
Pigmented inkjet photograph
Image: 23 × 50 in. (58.4 × 127 cm)
Gift of Walter Wick and Linda
Cheverton Wick, 2024.5.4

WALTER WICK (b. 1953)
Treehouse from Hey, Seymour!, 2015
Pigmented inkjet photograph
Image: 50 × 23 in. (127 × 58.4 cm)
Gift of Walter Wick and Linda
Cheverton Wick, 2024.5.5

WALTER WICK (b. 1953)
*Early Morning from Can You See
What I See? Out of This World*, 2013
Pigmented inkjet photograph
Frame: 39 × 58 ½ in. (99.1 × 148.6 cm)
Gift of Walter Wick and Linda
Cheverton Wick, 2024.5.6

WALTER WICK (b. 1953)
Marble Math from New York Times,
2016
Pigmented inkjet photograph
Image: 45 11/16 × 25 ½ in. (116.1 × 64.8 cm)
Gift of Walter Wick and Linda
Cheverton Wick, 2024.5.7





WALTER WICK (b. 1953)
Whirling Wonders from Can You See What I See? Hidden Wonders, 2021
 Pigmented inkjet photograph
 Frame: 39 × 58 ½ in. (99.1 × 148.6 cm)
 Gift of Walter Wick and Linda Cheverton Wick, 2024.5.8

WALTER WICK (b. 1953)
Balloon Launcher from Hey, Seymour!, 2015
 Pigmented inkjet photograph
 Image: 31 ⅝ × 51 ⅝ in. (80.3 × 131.1 cm)
 Gift of Walter Wick and Linda Cheverton Wick, 2024.5.9

WALTER WICK (b. 1953)
Balancing Trick from Hey, Seymour!, 2015
 Pigmented inkjet photograph
 Image: 51 ½ × 26 ⅝ in. (130.8 × 67.6 cm)
 Gift of Walter Wick and Linda Cheverton Wick, 2024.5.10

WALTER WICK (b. 1953)
A Ray of Light: A Book of Science and Wonder, 2019
 Pigmented inkjet photograph
 Frame: 44 × 36 ½ in. (111.8 × 92.7 cm)
 Gift of Walter Wick and Linda Cheverton Wick, 2024.5.11

WALTER WICK (b. 1953)
A Ray of Light: A Book of Science and Wonder, 2019
 Pigmented inkjet photograph
 Frame: 44 × 36 ½ in. (111.8 × 92.7 cm)
 Gift of Walter Wick and Linda Cheverton Wick, 2024.5.12

WALTER WICK (b. 1953)
A Ray of Light: A Book of Science and Wonder, 2019
 Pigmented inkjet photograph
 Frame: 34 ⅝ × 43 ½ in. (87.9 × 110.5 cm)
 Gift of Walter Wick and Linda Cheverton Wick, 2024.5.13

WALTER WICK (b. 1953)
A Ray of Light: A Book of Science and Wonder, 2019
 Pigmented inkjet photograph
 Frame: 44 × 36 ½ in. (111.8 × 92.7 cm)
 Gift of Walter Wick and Linda Cheverton Wick, 2024.5.14

WALTER WICK (b. 1953)
A Ray of Light: A Book of Science and Wonder, 2019
 Pigmented inkjet photograph
 Frame: 44 × 36 ½ in. (111.8 × 92.7 cm)
 Gift of Walter Wick and Linda Cheverton Wick, 2024.5.15

WALTER WICK (b. 1953)
Into the Woods from I SPY Fantasy, 1994
 Pigmented inkjet photograph
 Frame: 39 × 58 ½ in. (99.1 × 148.6 cm)
 Gift of Walter Wick and Linda Cheverton Wick, 2024.5.16

WALTER WICK (b. 1953)
Entrance from Can You See What I See? Hidden Wonders, 2021
 Pigmented inkjet photograph
 Frame: 35 ⅞ × 58 ½ in. (89.2 × 148.6 cm)
 Gift of Walter Wick and Linda Cheverton Wick, 2024.5.17

WALTER WICK (b. 1953)
The Marionettes from Can You See What I See? Hidden Wonders, 2021
 Pigmented inkjet photograph
 Frame: 35 ⅞ × 58 ½ in. (89.2 × 148.6 cm)
 Gift of Walter Wick and Linda Cheverton Wick, 2024.5.18

WALTER WICK (b. 1953)
Bins and Boxes from Can You See What I See? Hidden Wonders, 2021
 Pigmented inkjet photograph
 Frame: 35 ⅞ × 58 ½ in. (89.2 × 148.6 cm)
 Gift of Walter Wick and Linda Cheverton Wick, 2024.5.19

WALTER WICK (b. 1953)
Pearl Chest from Can You See What I See? Hidden Wonders, 2021
Pigmented inkjet photograph
Frame: 35 1/8 × 58 1/2 in. (89.2 × 148.6 cm)
Gift of Walter Wick and Linda
Cheverton Wick, 2024.5.20

WALTER WICK (b. 1953)
Under the Stairs from Can You See What I See? Hidden Wonders, 2021
Pigmented inkjet photograph
Frame: 35 1/8 × 58 1/2 in. (89.2 × 148.6 cm)
Gift of Walter Wick and Linda
Cheverton Wick, 2024.5.21

WALTER WICK (b. 1953)
Flights of Fancy from Can You See What I See? Hidden Wonders, 2021
Pigmented inkjet photograph
Frame: 35 1/8 × 58 1/2 in. (89.2 × 148.6 cm)
Gift of Walter Wick and Linda
Cheverton Wick, 2024.5.22

WALTER WICK (b. 1953)
Wind up Toys from Can You See What I See? Hidden Wonders, 2021
Pigmented inkjet photograph
Frame: 3 3/8 × 58 1/2 in. (89.2 × 148.6 cm)
Gift of Walter Wick and Linda
Cheverton Wick, 2024.5.2

← **WALTER WICK** (b. 1953)
Glass in the Window from Can You See What I See? Hidden Wonders, 2021
Pigmented inkjet photograph
Frame: 35 1/8 × 58 1/2 in. (89.2 × 148.6 cm)
Gift of Walter Wick and Linda
Cheverton Wick, 2024.5.24

WALTER WICK (b. 1953)
Upstairs from Can You See What I See? Hidden Wonders, 2021
Pigmented inkjet photograph
Frame: 35 1/8 × 58 1/2 in. (89.2 × 148.6 cm)
Gift of Walter Wick and Linda
Cheverton Wick, 2024.5.25

WALTER WICK (b. 1953)
Space Station Impossible Model, 2021
Wood, cardboard, miniature
LED lights, aluminum, toys
52 × 28 × 28 in. (132.1 × 71.1 × 71.1 cm)
Gift of Walter Wick and Linda
Cheverton Wick, 2024.5.26

WALTER WICK (b. 1953)
Curiosity Shop Model, 2021
Polyurethane, foam, paint, toys
27 × 25 × 28 in. (68.6 × 63.5 × 71.1 cm)
Gift of Walter Wick and Linda
Cheverton Wick, 2024.5.27

WALTER WICK (b. 1953)
Clouds from I SPY Fantasy, 2021
Pigmented inkjet photograph
Frame: 39 × 58 1/2 in. (99.1 × 148.6 cm)
Gift of Walter Wick and Linda
Cheverton Wick, 2024.5.28

WALTER WICK (b. 1953)
City buildings from Can You See What I See? Dream Machine, 2003
Wood, cardboard, miniature
LED lights, aluminum, toys
24 × 96 × 12 in. (61 × 243.8 × 30.5 cm)
Gift of Walter Wick and Linda
Cheverton Wick, 2024.5.29

WALTER WICK (b. 1953)
Castle model from Can You See What I See? Once Upon a Time, 2006
Polyurethane foam, paint, plaster, plexi
glass, model trees, found objects, toys
36 × 108 × 72 in. (91.4 × 274.3 × 182.9 cm)
Gift of Walter Wick and Linda
Cheverton Wick, 2024.5.30

WALTER WICK (b. 1953)
Scary Street Set from Can You See What I See? On A Scary Scary Night, 2008
Polyurethane foam, paint, toys
72 × 48 × 72 in. (182.9 × 121.9 × 182.9 cm)
Gift of Walter Wick and Linda
Cheverton Wick, 2024.5.31

WALTER WICK (b. 1953)
Seymour Display Model, 2014
Polyurethane resin, aluminum,
auto paint
48 × 8 × 8 in. (121.9 × 20.3 × 20.3 cm)
Gift of Walter Wick and Linda
Cheverton Wick, 2024.5.32

WALTER WICK (b. 1953)
1, 2, 3... from I SPY School Days, 1995
Pigmented inkjet photograph
Frame: 30 × 50 in. (76.2 × 127 cm)
Gift of Walter Wick and Linda
Cheverton Wick, 2024.5.33

WALTER WICK (b. 1953)
Bed Time from Can You See What I See? Dream Machine, 2003
Pigmented inkjet print
Frame: 30 × 50 in. (76.2 × 127 cm)
Gift of Walter Wick and Linda
Cheverton Wick, 2024.5.34

WALTER WICK (b. 1953)
Scary Castle (Red Room) Set from Can You See What I See? On A Scary Scary Night, 2007
Polyurethane, foam, paint, toys
41 × 49 1/2 × 64 in. (104.1 × 125.7 × 162.6 cm)
Gift of Walter Wick and Linda
Cheverton Wick, 2024.5.35

WALTER WICK (b. 1953)
Entertaining the Guest Set from Can You See What I See? Out of This World, 2013
Polyurethane, foam, paint, toys
25 1/2 × 45 1/2 × 42 in. (64.8 × 115.6 × 106.7 cm)
Gift of Walter Wick and Linda
Cheverton Wick, 2024.5.36

WALTER WICK (b. 1953)
Early Morning Set from Can You See What I See? Out of This World, 2013
Polyurethane, foam, paint, toys
Gift of Walter Wick and Linda
Cheverton Wick, 2024.5.37

WALTER WICK (b. 1953)
Space Ship Set, 2013
Polyurethane, foam, paint, toys
Gift of Walter Wick and Linda
Cheverton Wick, 2024.5.38

WALTER WICK (b. 1953)
Rocket Motors from Can You See What I See? Dream Machine, 2003
Pigmented inkjet print
Frame: 30 × 50 in. (76.2 × 127 cm)
Gift of Walter Wick and Linda
Cheverton Wick, 2024.5.39

WALTER WICK (b. 1953)
Island Model from I SPY Treasure Hunt, 1999
Polyurethane foam, paint, toys,
plaster, plexi glass
16 × 23 × 23 in. (40.6 × 58.4 × 58.4 cm)
Gift of Walter Wick and Linda
Cheverton Wick, 2024.5.40

WALTER WICK (b. 1953)
House model from Can You See What I See? The Night Before Christmas, 2005
Polyurethane foam, paint, toys,
baking powder
14 × 19 × 19 in. (35.6 × 48.3 × 48.3 cm)
Gift of Walter Wick and Linda
Cheverton Wick, 2024.5.41

WILLIAM JAMES GLACKENS
(1870–1938)
The Arbor Hartford, n.d.
Oil on canvas
Frame: 14 3/4 × 18 in. (37.5 × 45.7 cm)
Gift of Stan Dimock, 2024.6

WOMEN REFRAME AMERICAN LANDSCAPE



NOVEMBER 18, 2023

*Women Reframe American Landscape
Members Opening Reception*

Donors and Members

Top Donors

\$100,000+

Art Bridges Foundation
Department of Economic and
Community Development,
Connecticut Office of the Arts
David and Dorothy Lund
Robert C. Vance Foundation, Inc.

\$50,000–99,999

Richard P. Garmany Fund at the
Hartford Foundation for Public Giving
Stanley Black & Decker
William Pitt Foundation

\$25,000–49,999

American Savings Foundation
Arbella Insurance Foundation
Jay and Allison Bombara
Mr. and Mrs. Kenneth L. Boudreau
David T. Langrock Foundation
Hartford Steam Boiler Inspection
& Insurance Co.
Tinty Foundation

\$15,000–24,999

Bank of America
Bristle Cone Pine Foundation
Edward C. and Ann T. Roberts
Foundation
Mr. Bradford Korder
Mr. Todd Stitzer and
Mrs. Marenda Brown-Stitzer
Claudia Thesing
Dr. and Mrs. Peter P. Yu

\$10,000–14,999

Aeroflex Foundation
Mr. and Mrs. Arnold Amstutz
Dr. and Mrs. Peter D. Byeff MD
Michael and Dona Cassella
Ms. Cheryl A. Chase and Mr. Stuart Bear
Cheryl Chase and Stuart Bear
Family Foundation, Inc.
Mrs. Rhoda L. Chase
Ms. Kay Knight Clarke
Connecticut Humanities and the
Department of Economic and
Community Development, Office of the
Arts, which also receives support from
the federal ARPA
Ms. Mary Jane Dunn
Gong-Graham Family
Mr. and Mrs. David G. Jepson
KeyBank Foundation

Drs. Timothy P. McLaughlin
and Marian F. Kellner
Robert Lehman Foundation, Inc.
Mr. Thomas F. O'Neil III and
Ms. Nancy D. O'Neil
SBM Charitable Foundation, Inc.

\$5,000–9,999

Mr. and Mrs. Brett Abbott
Dr. Duffield Ashmead and Mr. Eric Ort
Barnes Group Foundation, Inc.
Mr. and Mrs. Scott Ceella
Central Connecticut State University
City of New Britain Commission
on the Arts
Clarence B. and Joan F. Coleman
Charitable Foundation
Connecticut Humanities
Dr. and Mrs. Martin Cooper
Mr. and Mrs. Jack Corroon
Mr. Thomas C. Flanigan and
Mr. Jonathan E. Stone
Mr. and Mrs. Charles J. Hamm
Mr. Stephen F. Hard and
Mr. Mark Giulietti
Hartford HealthCare
Mrs. Elaine M. Hobart
Mrs. Jean H. Holden
Dr. and Mrs. Richard L. Judd
Legrand Wiremold Charitable
Contributions Committee
Adlyn and Ted Loewenthal
Sid Bernard and Ed Miller Children's
Fund for the Arts at the Main Street
Community Foundation
Marjorie Moore Charitable Foundation
Cheryl and Harlow Murray
National Philanthropic Trust
New Britain Garden Club
The Projects Group
Susan and John Rathgeber
Rhoda and David Chase
Family Foundation, Inc.
Mr. Douglas H. Robins
Sandra and Arnold Chase
Family Foundation, Inc.
SEI Investments
Sorenson-Pearson Family Foundation
Inc.
Mr. and Mrs. Samuel D. Stout
Mr. Albert W. Tomasso
Mr. and Mrs. Steve J. Weiss
Mr. and Mrs. John H.P. Wheat
Mr. Walter Wick and
Ms. Linda Cheverton-Wick
William & Ellen Macristy Foundation
The William T. Sloper Trust for Andrew
J. Sloper Fund, Bank of America, NA
Trustee

\$2,500–4,999

Mrs. Karen H. Balko
Downes Construction Company, LLC
Duncaster Retirement Community
Eversource Energy
Anita Arcuni Ferrante and
Anthony Ferrante
Robert and Susan Fisher
Mr. Neal B. Freuden and
Ms. Andrea F. Levy
The George A. and Grace L. Long
Foundation, Bank of America,
NA Trustee
Mr. Thomas Gruber and
Ms. Elaine Widmer
Debra Holcomb and Dale Ashlock
Hospital for Special Care
Mr. and Mrs. Michael Humen
James H. Napier Foundation
John M. and Sandra Jezowski
The Donald W. and Dorothy D. Johnson
Fund at the Hartford Foundation for
Public Giving
Ms. Lisa Lazarus
M. Stephen and Miriam R. Miller
Mr. and Mrs. Thomas Soyster
Mr. and Mrs. Suneet Talpade
Thomas Mach Interiors
Thomaston Savings Bank Foundation
Torrington Savings Foundation
Dawn Tyler
University of Hartford
Dr. Don Wartella
Mr. and Mrs. William Watson
W. Casey and Kathryn West

\$1,000–2,499

Annum Architects, Inc.
Mr. and Mrs. B. Baiter
Mr. and Mrs. David Beaulieu
Phil Brencher
Prof. Richard Buel**
Mr. and Mrs. Jeffery Buell
Kenneth J. Carifa and Mark Garavel
Mr. William Chase and Dr. Lauren Kopyt
Mr. and Mrs. Peter H. Clarke
Brendan Collins and Shelby DiNobile
Mr. Evan R. Cowles and
Ms. Brie P. Quinby
Kathryn S.L. Cox
Mr. David W. Dangremond
Mrs. Ruth Ann C. Davis
Mr. and Mrs. John E. Downes III
Elizabeth H. Norton Trust Fund
Mr. and Mrs. Karl Fleischmann
Dr. Magda Gabor-Hotchkiss
Mr. and Mrs. Paul Garavel

Mr. William Gray and
Mrs. Diana Romney Gray
Mr. and Mrs. Pierre Guertin
Ms. Jessica Halverson and
Mr. Jack Torres-Onisto
Laura R. Harris
Ms. Pamela Hastings
Ms. Marie P. Healey
Ms. Margaret Heiner and
Mr. Oliver Tostmann
Mr. and Mrs. Gerald L. Hess
Mr. Duane L. Hughes
Mr. and Mrs. R. Alan Hunter
Sam and Polly Huntington
Ion Bank Foundation
Bruce Jervis and James Kowalski
Mr. and Mrs. Harvey S. Kelly
Joan Lazar Kemler and Barry J. Kemler
Janice and David Klein
Naomi and Joel M. Kleinman
Mrs. Kathleen Krackzowsky
Mr. Christopher Larsen
Mrs. Joan A. Leach
Judie and Coleman Levy
Brenda Manning
Harry and Janice Mazadoorian
Mr. and Mrs. Robert G. Montstream
Ms. Hope Page and Mr. Albert Norris
Mr. and Mrs. Paul B. Penney
Mr. and Mrs. Joseph Pierz
Mr. and Mrs. David E. Polk
Barbara E. Prey
Mr. and Mrs. David T. Price
John and Simone Reynolds
Mrs. Belle Ribicoff
Hal Rives and Margaret Ware
Mr. and Mrs. René Rosado
Dr. Ann Sagalyn and Mr. David Marks
Andrew and Patricia Salner
Mrs. Mary T. Sargent
Ms. Elizabeth A. Schiro and
Mr. Stephen Bayer
Ms. Shirley F. Scholder
Mr. Charles W. Shivery
Mr. and Mrs. Mark Sides
Mrs. Mary Jane Sobinski-Smith
and Mr. William Smith
Dr. Ted Stebbins
Dr. and Mrs. Alan L. Stern, M.D.
Mr. and Mrs. Keith Stevenson
Mr. and Mrs. Richard Tedder
Ms. Katherine Wadsworth
Dr. William B. White and
Ms. Krista Weaver
Mr. and Mrs. Sherwood Willard
Mr. Roy H. Wiseman and
Ms. Lisa C. Kugelman
Dr. and Mrs. Thomas J. Zaccheo, M.D.
Zachs Family Foundation, Inc.
Judith Zachs

\$500–999

Ms. Monique M. Aduddell and
Mr. Dennis J. Klapperich
Mr. Lans Anderson
Assured Partners Northeast, LLC
Mrs. Ellen Babcock
Mr. and Mrs. Paul Baylock
Mrs. Ola Bossio
Nancy A. Brennan
Mr. and Mrs. Robert Brody
Prof. Kathleen A. Butler
Mr. and Mrs. David Cappuccio
Mr. and Mrs. Ronald A. Carubba
Mr. Michael Centrella and
Mr. Thomas L. McCarthy
Ms. Susan Chandler
The Chubb Foundation
Hendricks Churchill
Ms. Christina Cocca
Cohn Reznick
Ms. Ruthie Davis and Mr. Innes S. Weir
Mrs. Ruth N. Day
Ms. Wendy DeAngelo
Distefano Hair Restoration Center
Mr. Richard Dlugos
Ms. Kim Dorfman
Mr. Bruce Edgren and Ms. Tamra Lair
Mrs. Jean Esselink
Sonia Evers
Mr. and Mrs. Phil L. Ferrari
Bruce and Kris Fletcher
Mr. and Mrs. Jerry Franklin
Mr. William Fuller
Gaffney Bennett & Associates, Inc.
Mr. and Mrs. Joseph Goldberg
Mr. Arnold C. Greenberg
Dr. Martha M. Greenwood and
Mr. David Levin
Ms. Kathryn Bucher Hanlon
Mr. and Mrs. Richard L. Hughes III
Mr. and Mrs. Doug Kartsen
Sutton Keaney
Susan Kelley and Robert Sheilds
Dr. and Mrs. David A. Kvam
Mr. and Mrs. Travis Lappe
Mr. Glenn LaVertu
Mr. Gerald M. Lemega and
Ms. Nancy R. Lemega-Watt
Mr. and Mrs. Peter Leombruni
Mr. and Mrs. Mark Lescher
Mr. and Mrs. Thomas H. Lorch
Mr. and Mrs. Daniel Magida
Mr. and Mrs. Thomas S. Marrion
James H. and Melinda L. Martin
Mr. Paul Martineau
Ms. Oscar Harrison Mayer
Mr. and Mrs. Joseph McCord
Mr. and Mrs. William J. McCue
Ms. Maria Miller and
Mr. John Charles Thomas
Mr. Robert Murzyn and
Mrs. Carol Larco-Murzyn

Mr. Andrew Obelnicki and
Ms. Kathleen Kelliher
Ms. Cathy Pepe
Mr. and Mrs. Alan M. Perrie
Dr. William A. Petit Jr.
Mr. and Mrs. James M. Reidy, Jr.
Mrs. Nancy A. Ringrose
Mr. and Mrs. Tony Scherer
Ms. Michele Seass
Mr. and Mrs. Daniel Sharp
Mr. Joseph M. Shortall and
Mrs. Sara L. Bernstein
Mrs. Judith M. Silver
Mr. and Mrs. Howard Small
Simone Small
Mr. and Mrs. Stuart Small
Mr. and Mrs. Kenneth Smith
Mr. John Stephenson and
Ms. Deborah Boynton
Dr. Anna Swinbourne
Mr. and Mrs. Townsend Thomas
Mr. Vincent Turley and
Ms. Fran Barringer
Mr. and Mrs. Cecil Ursprung
Mr. Andres Verzosa and
Mr. David Whaples
Mr. Lindsley Wellman
Mr. Philip Wellman and Ms. Leslie Smith
Susan Williams
Ms. Jane Wright Wolf and
Mr. Richard B. Wolf
Lina Ziurys

\$250–499

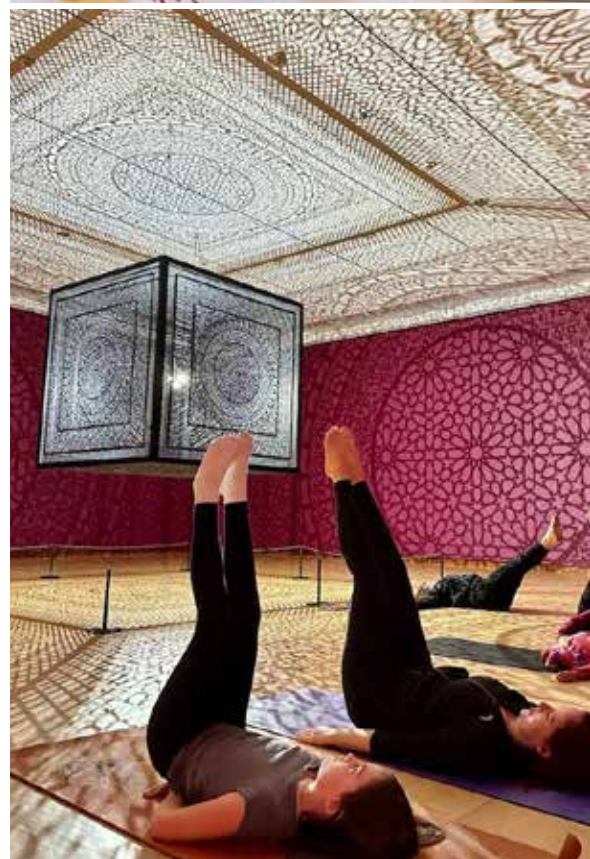
Ms. Beth Abbatemarco
Mr. Justus J. Addiss and
Ms. Alison L. Johnson
Mr. and Mrs. Douglas Adkins
Mr. and Mrs. Len Albert
Leslie S. Alexander and Norris Manser
Amica Companies Foundation
Mr. and Mrs. Raymond S. Andrews Jr.
Mr. Richard D. Angotta
Audra Antrum
Mr. and Mrs. Roger Astmann
Ms. Joanna Aversa and
Mr. Christopher M. Ursini Sr
Mr. James A. Baldwin and
Mr. William C. Baldwin
Laura Ballou
Ms. Ruth Batogowski
Ms. Clare F. Bean and Mr. Dana DiPietro
Ms. Sheryll Bedingfield
Mr. and Mrs. Jack A. Bergquist
Ms. Linda R. Bernstein
Mr. David Berto
The Bette Jane Charitable Fund
Ms. Elizabeth Bickley
Mr. Adam Bisson and
Mrs. Amanda Shuman-Bisson
Mr. and Mrs. Warren J. Blessing
Ms. Ellen Blumberg

Laura Boehm
 Dr. Gerard E. Bogucki
 Mr. Angelo Bollelo
 Robert and Sallie Boody
 Mr. James C. Boyle
 Mr. and Mrs. Tom Bradley
 Mr. Jeff Brown
 Dr. Ronald B. Brown and
 Rev. Jane H. Rowe
 Ms. Kimberly C. Burris and
 Dr. Cliff W. Wagner
 Ms. Mary Busick and
 Mr. Michael Ungaro
 Mrs. Barbara M. Buss
 Mr. John F. Byrnes
 Mr. and Mrs. Stephen Cantor
 Ms. Cynthia A. Carlson
 C.B. and M.S. Casinghino
 Mrs. Lynn F. Cavo
 Mr. Richard Charnick and
 Mr. Richard Mayo
 Ms. Carol L. Cheney
 Cheshire Public Library
 M. R. Cipriano
 Mr. and Mrs. Brian Clemow
 Mr. Gary Cluen and
 Mrs. Cathy Bysiewicz-Cluen
 Ms. Mary J. Cockram and
 Mr. David A. Corrigan
 Mrs. Michele Cohen
 Mr. and Mrs. Harold L. Colvocoresses
 Mr. Len Comeau
 Mrs. Kathleen S. Conran
 Mr. and Mrs. Brendan T. Conry
 Mr. and Mrs. Frank Czerwinski
 Mr. and Mrs. John D'Agostino
 Mr. Bryan C. Daleas
 Mr. Donald Davidson
 Mr. and Mrs. David Davison
 Carol M. De Berry
 Mr. and Mrs. Bruce Degen
 Mr. and Mrs. Lenny Diamond
 Edward H. Dietrich and
 Reyes Pinar Benjumea
 Ms. Joanna Dilion and
 Mr. Mark Goduto
 Mr. and Mrs. Alfred J. DiMaio
 Stan Dimock
 Mr. and Mrs. Benjamin Doolittle
 Helen Newell Douglas
 Ms. Diane A. Dounouk
 Mr. and Mrs. Chris Doyle
 Ms. Elizabeth F. Drake and
 Ms. Loretta Drake Carignan
 Mr. David Dunlap and Ms. Bridget Gray
 Timothy and Roberta Dwyer
 Mrs. Elaine Dymczyk
 Mr. and Mrs. David O. Elmore
 Elizabeth and Anthony Enders
 Mr. and Mrs. Robert Engling
 Robert and Elizabeth Engstrom
 Mr. and Mrs. Peter Fagan
 Dick and Donna Fanelli
 Charley and Mary Ferrucci
 Mr. and Mrs. Dan Fine
 Mr. and Mrs. Robert H. Forrester
 Ms. Nanci D. Fox and
 Mr. Garrison Leykam
 Dr. Hilary E. Freedman and
 Mr. Howard R. Zern
 Ms. Karen Freilich
 Mr. William Friedman and
 Ms. Pamela Diggle
 Ms. Doreen Fundiller-Zweig and
 Dr. Elliot Zweig
 Mr. and Mrs. Darrell R. Gagnon
 Ms. Anne Gallant
 Mr. and Mrs. Bob Garthwait Jr.
 Mr. and Mrs. Ken Geisler
 Mr. and Mrs. Mitchell Gilbert
 Ms. Jeanne Giles and Mr. John Seaton
 Ms. Beverly Giordano
 Ms. Jennifer Glick
 Dr. Jordan Goetz, MD
 Ms. Jill A. Goldberg and
 Mr. Barry D. Goldberg
 Mr. and Mrs. Robert B. Goode Jr.
 Mr. and Mrs. Timothy J. Grace
 Mr. Peter Grant and Dr. John Quinn
 Arthur and Zabelle Krasow Greenblatt
 Ms. Annamarie T. Grise
 Mark A. Grudzien and Ever Melo Yanac
 Marie S. Gustin
 Mrs. Susan M. Hall
 Dr. Alexandra Harris and
 Ms. Charlene C. Li
 Carla Harrod
 Mr. James Hartung and
 Ms. Patricia Jagoe
 Mr. and Mrs. Donald Hasenjager
 Mr. and Mrs. Michael Held
 Drs. R.V. and Patricia Hensley
 David Heskes
 Dr. and Mrs. Donald W. Hight
 Mr. and Mrs. Mark Hodson
 Mr. and Mrs. Richard Hoff
 Ms. Janet L. Hoffman
 Mr. and Mrs. G. Norman Holland
 Mr. and Mrs. Thomas Holt
 Mr. and Mrs. Wesley W. Horton
 Mr. and Mrs. Brian Hubbard
 Mr. and Mrs. Patrick J. Hughes
 Kimball and Dorothy Hunt
 Mr. and Mrs. Brad Hutensky
 Mr. Albert G. Ilg
 Mrs. Nancy Jezowski
 Sally and Carl Johnson
 Ms. Donna Jones-Searle and
 Mr. Bill Searle
 Mr. Ted Kaplan and
 Ms. Roberta Woronow
 Dr. David S. Keating and
 Rev. Anne E. Aurand
 Mr. Robert D. Keder
 Mr. Austin King
 Ms. Sally King and Mr. Eric Lukingbeal
 Mr. and Mrs. Stan Klaneski
 Mr. Bill Knight and Ms. Jill Adams
 Mr. Gary W. Knoble
 Ms. Rose Kochanowsky
 Mr. Walter Kosman
 Dr. and Mrs. Bernard Kosto
 Ms. Sylvia Krajewska and
 Mrs. Jadwiga Krajewska
 Mr. and Mrs. Donald H. Kray
 Ms. Alyssa Krom and
 Mr. Jonathan Horton
 Mr. Randy Kurker-Stewart
 L & L Services
 Ms. Melissa Lake
 Mr. Richard Lalli
 Mrs. Mary Alice Landry
 Ms. Linda Lane
 Marilou and Mike Lang
 Mr. Thomas J. Lanson and
 Mrs. Lori Becker-Lanson
 Richard and Elaine Lau
 Mr. and Mrs. William A. Lazarek
 Ms. Sandra Ann Lee
 Dr. Dawn Leger
 Robert T. Leo, Jr.
 Mr. and Mrs. Michael B. Levin
 Ms. Jennifer Levine
 Mr. and Mrs. Dean Levy
 Mr. and Mrs. Andrew Lieberman
 Mr. James Ligas and Ms. Mary Nerbonne
 Mr. James Lizzi
 Jenna DeNovellis Lucas
 Mr. Jeremy J. Lucas and
 Ms. Danielle Wiston
 Mrs. Sylvia Wilson Lucas
 Ms. Lanette Spranzo Macaruso
 and Mrs. Linda L. Klopp
 Mr. and Mrs. Robert J. Mandel
 Mr. and Mrs. Guy Marhewka
 Rev. Frank J. Matera
 Dr. Melissa Matthes
 Ms. Anne McAloon
 Dr. and Mrs. Gerald McAuliffe
 Mr. William F. McAvoy and
 Ms. Nancy Tomaselli
 Sekiko McDonald
 Mr. and Mrs. David B. McQuillan
 Meriden Public Library
 Mr. Tracy Midgley and
 Ms. Joncia Lytwynec
 Ms. Kathy Mikulski
 Ms. Laura Lee Miller and
 Mr. Brian M. Bowes
 Mr. and Mrs. Robert M. Miller
 Mr. Chad Millman
 David Miner and Stephanie Robiner
 Dr. and Mrs. Stanislav Moline
 Mr. and Mrs. David W. Moore
 Mr. and Mrs. Peter Moster
 Ella Moyer
 Mr. Richard Musgrave
 Ms. Nancy Najarian
 Mr. and Mrs. Robert R. Nattrass

Mrs. Erin P. Nazzaro
 Dr. Brenda A. Nurse MD and
 Mr. Kenneth A. Hampton
 Mr. and Mrs. Steve Ozga
 Rev. Joseph L. Pace
 Ms. Katherine Papathanasis
 Ms. Michele Parrotta
 Mr. Greg Pastor and
 Ms. Heather Blum-Pastor
 Ms. Mary Peng
 Ms. Louise Perkins and Dr. Jeff Glans
 Mr. and Mrs. Scott Perzan
 Mr. Paul R. Petrie and Ms. Allison T. Hild
 Ms. Jane B. Phillips
 Kristan Pierz and Brian Molinari
 Ms. Christine M Pina
 Plainville Public Library
 Mr. and Mrs. Elliott Pollack
 Mr. Stuart B. Popper
 Mrs. Catherine Probolus
 Mr. Theodore Raczka and
 Ms. Nancy Conaway-Raczka
 Mr. and Mrs. Ian C. Rickard
 Dr. Adam Robersmith and
 Mr. Donald J. Myers
 Ms. Andrea B. Rogers
 Robert and Brenda Roggeveen
 Ms. Caitlin Rose
 Ms. June C. Roy
 Mr. Bruce Rudolph
 Dr. Elizabeth N. Rumohr
 Ms. Claudia J. Ryan
 Mr. and Mrs. Richard Sadler
 Paul and Annette Salina
 Kathleen McKeown Sauer
 Mr. and Mrs. Sebastian J. Sbalcio
 Mr. Brad J. Schide
 Mr. and Mrs. Michael J. Scougall
 Mr. and Mrs. George Sebastian-Coleman
 Mr. Ted Sewitch and Ms. Nancy Sewitch
 Mr. and Mrs. Jonathon Seymour
 Claire E. Shea
 Ms. Anna Sielawko
 Mrs. Hope V. Sim
 Robin Simmons
 Mr. and Mrs. Kenneth W. Simon
 Mrs. Susan L. Simonds
 Dr. and Mrs. George E. Skarvinko MD
 Mr. and Mrs. Nelson Sly Jr.
 Ms. Kate Smith
 Mr. and Mrs. William J. Stack Jr.
 Mr. Mike Stockman and
 Ms. Carrie Stockman
 Mr. and Mrs. James G. Sutton
 Mrs. Sallie S. Sypher
 Ms. Debra L. Szabo
 Mr. Andrew Szegedy-Maszak
 and Ms. Elizabeth Bobrick
 Mr. and Mrs. Erik Szyluk
 Mrs. Barbara F. Taylor
 Ms. Ann E. Thomas and
 Mr. Michael B. Bonzagni

Mrs. Beverly W. Thomas
 Mr. and Mrs. John H. Thomas Jr.
 Lavell Thompson and
 Margaret Mary Cochrane
 Mrs. Nancy Tomasso
 Mr. Humphrey Tonkin and
 Ms. Jane Edwards
 Mrs. Sally F. Tresselt
 Becky and Tom Trutter
 Mr. and Mrs. Gerald J. Tullai
 United Health Group
 Ms. Susan Vieira and
 Mr. Richard Wiederhorn
 Mr. Robert T. Vinopal
 Mr. and Mrs. James Voos
 Lynn and John Wadhams
 Mr. and Mrs. Jack Waller
 The Walt Disney Company Foundation
 Mrs. Mary-Jo W. Warren
 Mr. and Mrs. Rick Warters
 Mrs. Sylvia E. Webb
 Mary and Mark Wendell
 Mr. and Mrs. Delmer Weston
 Mr. John D. Whalen and
 Ms. Dale Anne Whalen
 Mrs. Karoll Wiater
 Mrs. Gretchen Wiedie
 Mr. and Mrs. Scott Wilcox
 Mr. and Mrs. John Wischenbart
 Ms. Kathanne Wray
 Mrs. Cynthia Yoczik
 Mr. and Mrs. Jonas Zdanys
 Mrs. Pauline Zimmerman

***Deceased*



Annual Fund

\$5,000–9,999

Mr. and Mrs. Kenneth L. Boudreau
Mr. and Mrs. David G. Jepson
Dr. Timothy P. McLaughlin and
Dr. Marian F. Kellner
National Philanthropic Trust
New Britain Garden Club
Mr. Douglas H. Robins
Sorenson-Pearson Family Foundation
Inc.
William & Ellen Macristy Foundation

\$2,500–4,999

Mrs. Karen H. Balko
Mr. and Mrs. Jack Corroon
Mr. Thomas C. Flanigan and
Mr. Jonathan E. Stone
Mr. Thomas Gruber and
Ms. Elaine Widmer
Mr. Stephen F. Hard and
Mr. Mark Giulietti
Debra Holcomb & Dale Ashlock
Mrs. Dawn C. Tyler

\$1,000–2,499

Mr. and Mrs. David Beaulieu
Jay and Allison Bombara
Phil Brencher
Mr. and Mrs. Jeffery Buell
Michael and Dona Cassella
Mr. and Mrs. Peter H. Clarke
Mrs. Kathryn S.L. Cox
Mrs. Ruth Ann C. Davis
Ms. Mary Jane Dunn
Mr. Neal B. Freuden and
Ms. Andrea F. Levy
Mr. and Mrs. Paul Garavel
Ms. Pamela Hastings
Ms. Marie P. Healey
Mrs. Jean H. Holden
Mr. and Mrs. R. Alan Hunter
Dr. and Mrs. Theodore H. Johnson
Mr. Christopher Larsen
Mr. and Mrs. Robert G. Montstream
Mr. and Mrs. Paul B. Penney
Mrs. Belle Ribicoff
Dr. Ann Sagalyn and Mr. David Marks
Ms. Elizabeth A. Schiro and
Mr. Stephen Bayer
Ms. Shirley F. Scholder
Mr. Charles W. Shivery
Ms. Katherine Wadsworth
Mr. and Mrs. William Watson
Zachs Family Foundation, Inc.

\$500–999

Mr. and Mrs. B. Baiter
Nancy A. Brennan
Mr. Michael Centrella and
Mr. Thomas L. McCarthy
The Chubb Foundation
Mr. Richard Dlugos
Mrs. Jean Esselink
Sonia Evers
Mr. and Mrs. Phil L. Ferrari
Mr. William Fuller
Mr. Arnold C. Greenberg
Ms. Kathryn B. Hanlon
Ms. Laura Harris
Ms. Margaret Heiner and
Mr. Oliver Tostmann
Mr. and Mrs. Gerald L. Hess
Bruce Jervis and James Kowalski
Sutton Keany
Susan Kelley and Robert Sheilds
Mr. and Mrs. David M. Klein
Mr. Gerald M. Lemega and
Ms. Nancy R. Lemega-Watt
Mr. and Mrs. Thomas H. Lorch
Mr. and Mrs. Daniel Magida
Ms. Cathy Pepe
Mr. and Mrs. Alan M. Perrie
Mr. and Mrs. James M. Reidy, Jr.
Mrs. Nancy A. Ringrose
Mr. Harold Rives and Mrs. Marki Ware
Mr. and Mrs. Tony Scherer
Ms. Michele Seass
Mr. Joseph M. Shortall and
Mrs. Sara L. Bernstein
Simone Small
Mr. John Stephenson and
Ms. Deborah Boynton
Mr. and Mrs. Keith Stevenson
Mr. and Mrs. Richard Tedder
Thomaston Savings Bank Foundation
Mr. Albert W. Tomasso

\$250–499

Dr. Duffield Ashmead and Mr. Eric Ort
Ms. Linda R. Bernstein
The Bette Jane Charitable Fund
Dr. Gerard E. Bogucki
Mr. Jeff Brown
Prof. Kathleen A. Butler
Mr. and Mrs. David Cappuccio
Mr. and Mrs. Ronald A. Carubba
Hendricks Churchill
Mr. Donald Davidson
Mrs. Ruth N. Day
Stan Dimock
Mr. and Mrs. Chris Doyle
Robert and Elizabeth Engstrom

Mr. William Friedman and
Ms. Pamela Diggle
Mr. and Mrs. Darrell R. Gagnon
Mr. and Mrs. Bob Garthwait Jr.
Ms. Jeanne Giles and Mr. John Seaton
Drs. R.V. and Patricia Hensley
Ms. Sally King and Mr. Eric Lukingbeal
Mr. and Mrs. Joel M. Kleinman
Ms. Rose Kochanowsky
Dr. and Mrs. Bernard Kosto
Mr. Richard Lalli
Mr. and Mrs. Travis Lappe
Mr. and Mrs. Mark Lescher
Mrs. Brenda Manning
Mr. and Mrs. David W. Moore
Mr. Richard Musgrave
Ms. Michele Parrotta
Ms. Andrea B. Rogers
Mr. and Mrs. René Rosado
Mrs. Mary T. Sargent
Ms. Kathleen M. Sauer
Mr. and Mrs. Michael J. Scougall
Mr. and Mrs. Jonathon Seymour
Mr. and Mrs. Daniel Sharp
Ms. Claire E. Shea and
Ms. Anastasia Kimball
Mr. and Mrs. Nelson Sly Jr.
Claudia Thesing
Mrs. Beverly W. Thomas
Mrs. Sally F. Tresselt
United Health Group
The Walt Disney Company Foundation
Mrs. Gretchen Wiedie
Susan Williams

\$100–249

Mrs. Michelle Adams
Mr. Justus J. Addiss and
Ms. Alison L. Johnson
Mr. and Mrs. Len Albert
Amica Companies Foundation
Mr. and Mrs. Raymond S. Andrews Jr.
Mr. James A. Baldwin and
Mr. William C. Baldwin
Mr. and Mrs. David N. Barry
Ms. Clare F. Bean and Mr. Dana DiPietro
Ms. Robin G. Becker and
Mr. Kevin Della Bianca
Ms. Adrienne Benjamin
Ms. Carol S. Benjamin
Ms. Elizabeth Bickley
Big Y Community Bag Program
Dr. and Mrs. Jack N. Blechner MD
Mrs. Laura M. Boehm
Mrs. Marie Bogdanski and
Ms. Barbara V. LaRosa
Mr. and Mrs. Robert B. Boody

Mrs. Ola Bossio
 Dr. and Mrs. Carl H. Braren
 Bristol Meyers Squibb
 Dr. and Mrs. James F. Brodey MD
 Mr. and Mrs. Chester J. Brodnicki
 Mr. Jeff Brohinsky and
 Ms. Nancy J. Matula
 Mr. and Mrs. Craig H. Brown
 Mr. John Buckey
 Mrs. Barbara M. Buss
 Mr. and Mrs. Stephen Cantor
 Atty. Kenneth J. Carifa and
 Mr. Mark S. Garavel
 Mr. and Mrs. Herbert E. Carlson, Jr.
 Mr. and Mrs. Anthony R. Carter
 C.B. and M.S. Casinghino
 Ms. Susan Chandler
 Ms. Hope S. Childs
 Dr. Michael R. Cipriano and
 Ms. Kathleen Surprenant
 Mr. and Mrs. Brian Clemow
 Mr. Gary Cluen and
 Mrs. Cathy Bysiewicz-Cluen
 Ms. Margaret J. Coe
 Mrs. Kathleen S. Conran
 Dr. and Mrs. Martin Cooper
 Ms. Janet Czepiel
 Ms. Melissa Davis
 Carol M. De Berry
 Dr. Tina de Cruz
 Mr. Craig Diangelo and
 Mr. Frank Stevens
 Edward H. Dietrich and
 Reyes Pinar Benjumea
 Ms. Linda Discotto
 Mrs. Paula L. Dorn
 Ms. Frances Dunn
 Mrs. Norma Bonci Dworski
 Elaine Dymczyk
 Ms. Irena Dzierzbinski
 Mr. and Mrs. Jon Eisenhandler
 Ms. Maribeth N. Eugene
 Eversource Energy
 Ms. Patricia M. Fahey
 Anita Faulise
 Mr. Gerald Feldman
 Dr. and Mrs. Robert L. Fisher
 Julie Fitzpatrick
 Dr. and Mrs. Bruce Fletcher
 Ms. Patti Flynn-Harris
 Dr. Hilary E. Freedman and
 Mr. Howard R. Zern
 Judith Gaffney
 Mr. Paul Gianaris
 Ms. Beverly Giordano
 Mr. and Mrs. Robert B. Goode Jr.
 Mr. and Mrs. Timothy J. Grace
 Mrs. Laura S. Grey
 Ms. Greta Gribkoff
 Mr. and Mrs. David M. Hadlow Jr.
 Mrs. Susan M. Hall
 Ms. Dene Hart and Ms. Cate Keithline

Mr. and Mrs. Richard M. Harter
 Mr. and Mrs. Donald Hasenjager
 Mr. Gilbert K. Hatch Jr.
 Susan Hatch
 Ms. Janet L. Hoffman
 Mr. and Mrs. G. Norman Holland
 Mr. Gerald Holmes
 Mrs. Lily Holthoff
 Celia Hopkinson
 Mr. and Mrs. Jay T. Hostetter
 Ms. Virginia D. Houghtaling
 Mr. and Mrs. Brian Hubbard
 Ms. Diana Hughes
 Mr. and Mrs. Patrick J. Hughes
 Mr. and Mrs. Richard L. Hughes III
 Mr. and Mrs. Kimball H. Hunt
 Mr. and Mrs. B. Theodore Jacobs
 Mrs. Ruth Jacobson
 Mr. and Mrs. John M. Jezowski
 Mrs. Nancy Jezowski
 Ms. Donna Jones-Searle and
 Mr. Bill Searle
 Mr. Ted Kaplan and
 Ms. Roberta Woronow
 Mrs. Sharon Kehmna
 Ms. Karen H. Kellerman and
 Mr. Peter Arakas
 Mr. and Mrs. Peter W. Kennedy
 Mr. Patrick Kenny and Ms. Ann F. Kenny
 Konstantin Family Foundation
 John Kulesza
 Mr. Jeffrey F. Lahr and
 Ms. Janet L. Valeski
 Ms. Patricia Lavery
 Mr. and Mrs. William Lavine
 Ms. Judith Lawes
 Ms. Joanne Lawson
 Ms. Lisa S. Lazarek
 Ms. Sandra A. Lee
 Mr. and Mrs. Gerald M. Leibowitz
 Mr. and Mrs. Michael B. Levin
 Ms. Claudia Lindsey and
 Mr. Michael Fotos
 Ms. Margaret R. Lorence
 Irene Loretto
 Mr. Sanford H. Low
 Mrs. Sylvia Wilson Lucas
 Mr. and Mrs. Ian MacKay
 Mr. and Mrs. Gregory J. Manning
 Ms. Linda Markiewicz
 Mr. and Mrs. John A. Marshall
 Mr. Tom A. Martin and
 Ms. Susan Spiggle
 Ms. Diana L. Martínez
 Rev. Frank J. Matera
 Ms. Donna Matulis
 Mr. and Mrs. Harry N. Mazadoorian
 Mr. and Mrs. George Mazaitis
 Robert A. Mazzoni
 Mr. and Mrs. Jon McKiernan
 Ms. Lucy McMillan
 Dr. Charles McNair

Ms. Linda J. Mead
 Ms. Maria Miller and
 Mr. John Charles Thomas
 Dr. David J. Miner MD and
 Ms. Stephanie J. Robiner
 Morley Elementary School Library
 Ms. Cynthia Mullins
 Mrs. Margaret Murphy
 Mr. and Mrs. Arthur M. Nassau
 Mr. and Mrs. Robert R. Nattrass
 Ms. Johanna B. Needham
 Mr. and Mrs. Don O. Noel
 Mr. Tom O'Brien and Mrs. Marie O'Brien
 Mr. and Mrs. Harold E. Panciera
 Ms. Jane Paradise
 Mr. and Mrs. Glen Parchmann
 Mr. and Mrs. Clifford J. Parker
 Mr. and Mrs. Donald C. Paulson
 Mrs. Sibyl A. Pellum
 People's Bank
 Mr. and Mrs. Scott Perzan
 Kristan Pierz and Brian Molinari
 Ms. Christine M. Pina
 Ms. Leslie Pollack
 Mr. and Mrs. John R. Rathgeber
 Ms. June C. Roy
 Diana and Vincent Rudzinski
 Ms. Claudia J. Ryan
 Mr. and Mrs. Paul G. Salina
 Mr. and Mrs. Sebastian J. Sbalcio
 Mr. and Mrs. Gerald Schwartz
 Mr. Gene Sengstock and Ms. Marie Darin
 Mr. Paul H. Serenbetz
 Mr. and Mrs. Ronald Sexton
 Mr. and Mrs. Ralph D. Sherman
 Mr. Alan K. Shomsky and
 Ms. Melanie H. Kotkowski
 Ms. Susan Simons
 Dr. and Mrs. George E. Skarvinko MD
 Dr. and Mrs. Bolesh J. Skutnik
 Duncan Somerville
 Mr. Ernest H. Spieler and
 Ms. Joanne King
 Mr. Robert Srulowitz and
 Ms. Sharon Straka
 Mr. and Mrs. William J. Stack Jr.
 Mr. and Mrs. Kent I. Stahl
 Mrs. Margaret T. Storrs
 Mr. and Mrs. Samuel D. Stout
 Mr. Mervyn F. Strauss and
 Ms. June Mandelkern
 Ms. Emily M. Talcott and Mr. Ken Lynch
 Mr. and Mrs. Jason Tanzer
 Dr. and Mrs. Paul Thompson
 Leontine Thomson
 Mr. John L. Thorne
 Ms. Martha G. Trask
 Mr. and Mrs. Tom Trutter
 Mr. and Mrs. Gerald J. Tullai
 Mr. and Mrs. Frederick C. Twichell
 Dr. and Mrs. Dean Uphoff
 Catherine Van Steen

Mr. and Mrs. John H. Vanderbilt
 Mrs. Esther S. Veley
 Ms. Susan Vieira and
 Mr. Richard Wiederhorn
 Mr. Robert T. Vinopal
 Mr. Richard Voigt
 Lynn Hayden Wadhams and
 John D. Wadhams
 Mr. Lindsley Wellman
 Mr. and Mrs. Jere Wilson
 Mr. and Mrs. Richard A. Wiszniak
 Mrs. Cynthia Yoczik
 Dr. and Mrs. Fred M. Ziter Jr.

\$50–99

Mr. Paul L. Altieri
 Mrs. Jean Amenta
 Mr. and Mrs. Kenneth Archer
 Ms. Boguslawa Badon
 Ms. Nancee J. Beidler-Torns
 Ms. Masako Bellomo
 Ms. Celestine Bernard
 Mr. Jim Bernhardt
 Mrs. Roberta C. Beyer
 Ms. Penney Borovsky
 Mr. and Mrs. Tom Bradley
 Ms. Alice L. Brennan
 Ms. Sherry Buckerrough
 Ms. Alice Burstein
 Ms. Marla Campbell
 Ms. Mary Cannata
 Mr. Kent E. Carlson and
 Ms. Karalyn Carlson
 Kathleen and William Carroll
 Mr. and Mrs. David S. Chase
 Mr. and Mrs. John T. Clancy
 Ms. Janet G. Clark
 Marji D. Cloutier
 Mr. and Mrs. David Colpitts
 Mr. and Mrs. Harold L. Colvocoresses
 Mr. and Mrs. James S. Cook
 Mr. and Mrs. Bruce Corbett
 Gloria Coschigano
 Edward F. Crespan
 Mr. Paul Deleeuw and
 Ms. Jeanne Leibham
 Nicole DeLong
 Dr. Nancy Marie DePalma and
 Mr. James Zareski
 Mr. and Mrs. Richard M. Dighello
 Ms. Diane A. Dounouk
 Ms. Cynthia A. Dudjoc
 Ms. Rebecca Earl
 Dr. Linda S. Erlanger and
 Rev. Margret Hofmeister
 Ms. Patricia Feeley
 Dr. and Mrs. Edward J. Feinglass
 FM Global Foundation
 Ms. Eileen G. Fritz
 Drs. Michael and Adrienne Fulco
 Mr. and Mrs. Mark Gaffney

Ms. Shirley Galka and Ms. Susan Fabian
 Patrick and Frances Gallagher
 Les Gallosilver
 Mr. and Mrs. Mark Gantner
 Mr. and Mrs. Clinton Gladding
 Mr. Scott Glaser
 Mr. and Mrs. Marc Glass
 Mr. Barry Goldstein
 Ms. Deb Goldstein
 Rufino Gonzalez and Alexandra Vincenti
 Ms. Laurel Goodgion
 Mr. and Mrs. Jerrold W. Goodman
 Mr. Peter Grant and Dr. John Quinn
 Dr. Marguerita J. Grecco
 Mrs. Carole R. Greenbaum and
 Mr. Jeremy Greenbaum
 Joe Grieco
 Ms. Elizabeth A. Hammaker
 Ms. Jane A. Harris
 Ms. Christine M. Hayes
 Mr. Robert B. Hurd
 Mr. Herb Isaacson
 Ms. Jan Maria Jagush
 Mrs. Carolyn Johnson
 Mr. and Mrs. Masood Karimian
 Mr. and Mrs. Paul Kellogg
 Miss Deborah Kennedy
 Ms. Deb Key and Ms. Darcy Mundair
 Mr. James C. Kieffer
 Kerrie King
 Dr. Leslie S. Kish
 Dr. Lawrence Klein and
 Ms. Yunfang Zhang
 Ms. Lori Ann Klimach
 Mr. and Mrs. Ralph H. Klumb
 Dr. and Mrs. David J. Krugman
 Mrs. Margaret C. Kundahl
 Ms. Carol P. Lacoss
 Ms. Shirley Leong
 Mr. Michael Levinson
 Mr. and Mrs. A. Dwight Lopes
 Mr. Rafael Lopez
 Mr. and Mrs. Paul Lundie
 Ms. Christine Lynch
 Mrs. Sharon Lynch
 Ms. Lenore H. Mand
 Marx Family Fund
 Ms. Mary Lou Mayo
 Ms. Anne McAloon
 Mr. Kenton McCoy
 Sekiko McDonald
 Marianne J. Melchionde
 Ms. Elizabeth D.C. Meyer
 Mr. Harry E. Meyer
 Ms. Maureen Miller
 Mr. and Mrs. James E. Mirakian
 Mr. and Mrs. Jeffrey Mitchell
 Mr. Tom D. Morganti and Ms. Nan Tartt
 Mr. and Mrs. James M. Moriarty
 Mr. and Mrs. Tony Neidlinger
 Ms. Shirley Mae Neu
 Ms. Robin Newberg

Mr. and Mrs. Jonathan Oakleaf
 Ms. Shelley B. O'Brien
 Ms. Jane ODonnell
 Ms. Alison E. Osborne
 Mr. and Mrs. Tom Oxman
 Ms. Nancy W. Pacht
 Mrs. Kathy A. Pacinda
 Mr. David A. Peck and
 Ms. Susan E. Leslie
 Dr. William A. Petit Jr.
 Jon Phillips
 Charlotte Pinsky
 Mrs. Lisa Pizzolla
 Mr. Steven M. Price and
 Mrs. Priscilla Kerbin-Price
 Mr. Thomas J. Purcell
 Mr. Jim Reiner
 Ms. Patricia Reville
 Ms. Janet L. Robb
 Mr. and Mrs. Paul K. Rogers III
 Mr. and Mrs. Philip C. Sayres Jr.
 Mr. and Mrs. Arthur Shahverdian
 Mrs. Hope V. Sim
 Ira Spar, M.D.
 Ms. Carolyn Spencer
 Hannah Butler Steel
 Dr. and Mrs. Jeffrey Stein MD
 Ms. Marianne Stieglitz
 Richard Strickland and Darcy Topper
 Mr. and Mrs. James G. Sutton
 Mr. and Mrs. John H. Thomas Jr.
 Ms. Mary C. Tierney
 Mr. Stephen Utz
 RuthAnne Visnauskas
 Mr. Edward C. Vollmer
 Mr. Mark von Mayrhauser and
 Ms. Dawn von Mayrhauser
 Mr. and Mrs. Thomas J. Wall
 Ms. Nicki G. Wallhofer
 Ms. Linda Webber
 Heide Weise
 Mr. Jim Wellman
 Mr. and Mrs. Gerry Whitehead
 Mrs. Jean Williams
 Mrs. Mary K. Willmott
 Mr. Herbert Winnik
 Mr. Nathan D. Woodberry
 Dr. and Mrs. Thomas J. Zaccaro MD
 Ms. Suzanne E. Zajac and
 Mr. Clifford A. Birdsey
 Ms. Carol Zapadka

Foundations and Government Support

\$100,000+

Art Bridges Foundation
American Rescue Plan Act Funds (ARPA)

\$25,000–99,999

Richard P. Garmany Fund at the
Hartford Foundation for Public Giving
Connecticut Humanities and the
Department of Economic and
Community Development, Office
of the Arts, which also receives
support from the federal ARPA
American Savings Foundation
Department of Economic and
Community Development,
Office of Arts
Stanley Black and Decker
Arbella Insurance Foundation
Tinty Foundation

\$10,000–24,999

Bristle Cone Pine Foundation
David T. Langrock Foundation
Edward C. and Ann T. Roberts
Foundation

Bank of America
SBM Charitable Foundation
Cheryl Chase and Stuart Bear Family
Foundation
KeyBank Foundation
Robert Lehman Foundation

\$5,000–9,999

Connecticut Humanities
Clarence B. and Joan F. Coleman
Charitable Foundation
Marjorie Moore Charitable Foundation

\$2,500–4,999

Eversource Energy
Sandra and Arnold Chase Family
Foundation
The George A. and Grace L. Long
Foundation
New Britain Commission on the Arts
Duncaster
Ion Bank Foundation
James H. Napier Foundation
Torrington Savings Foundation

\$250–2,499

Sid Bernard and Ed Miller Children's
Fund for the Arts at the Main Street
Community Foundation
Hospital of Central Connecticut
Elizabeth H. Norton Trust Fund
Community Foundation of Greater
New Britain
The Donald W. and Dorothy D. Johnson
Fund at the Hartford Foundation for
Public Giving

Matching Gifts

Amica Companies Foundation
Bank of America
Bristol Meyers Squibb
Eversource Energy
FM Global Foundation
Microsoft

People's Bank
Stanley Black and Decker
The Chubb Foundation
The Walt Disney Company
United Health Group

In-Kind Donations

Mrs. Ola Bossio
Mrs. Lisa Lappe



Tributes

In Honor of

Joanna Biskupski
Mrs. Elaine Paster

Amy Holmes 50th Birthday
Ms. Karen Bonitz
Julie, Peter, Fitz and Gracen Fitzpatrick
Mr. and Mrs. Richard Fitzpatrick
Ms. Deb Goldstein
Mr. Duane L. Hughes
Ms. Lucy McMillan

Enrique Juncadella
Anonymous

Brenda Manning
Mr. and Mrs. Gregory J. Manning

Colleen Mitchell
Ms. Zoe Velez

David Polk
Mr. and Mrs. James C. Boyle
Mr. William Gray and
Mrs. Diana Romney Gray

Amanda Shuman Bisson
Dennis and Donna Randall

Sam and Donna Stout
Ms. Hope Page and Mr. Albert Norris

In Memory of

June Bogatz
Mrs. Mary K. Willmott

Jayne DePole-Bogucki
Dr. Gerard E. Bogucki
Lelle Brennan
Betsy Brewster
Ms. Judith Brown
Cheryl Chakranrayan
Ms. Gloria Coschigano
Laurie Costa
Mr. and Mrs. Michael Doyon
Mrs. Karen Geitz
Ms. Ginger Germano
Gloria Girouard
Evie Goldich
Ms. Babette Holland and
Mr. Tony Brown
Beth Kacel
Mr. and Mrs. Bob Kehmna
Ms. M. Sue Kowalsky
Mr. and Mrs. William Lavine
Ms. Diana Lori Martinez
Mr. and Mrs. Steven Mauro
Ms. Melissa Murphy
Mr. and Mrs. Gary Nolan
Mr. and Mrs. Gary Palmer
Ms. Lisa Pizzolla
Shehroo Pudumjee
Ms. Cherie Robinson
Ms. Judith A. Ryan
Barbara Salinger
Mr. and Mrs. Jim Seaboldt
Mr. and Mrs. Carlos Vilas

Dr. Burton Cunin
Mr. and Mrs. Douglas Kartsen

Katherine Dinep
Ruth Day

Paul Egan
Liz Egan

Jeannette Gladczuk
Jim and Laurie Gworek

Elizabeth Gourlay
Mr. and Mrs. Reade Fahs

Russell W. Holmes, Jr.
Mr. Gerald Holmes
John and Carm Jagush
Ms. Jan Maria Jagush

Henry (Hank) Martin
Cheryl Chase and Stuart Bear
Mr. Tom Flanigan and
Mr. Jonathan Stone

Hugh & Lois Penney
Mr. and Mrs. Paul B. Penney

Mary Margaret Piazza
Mr. and Mrs. Lloyd Fongemie
Mrs. Jan Hasenjager
Ms. Margaret Klimaski
Ms Judith Kronick
Ms. Geraldine Lombard
Mr. and Mrs. Nick Martello
Ms. Sekiko McDonald
Ms. Angela Ritter
Mrs. Claudia I. Thesing

Christine Shivery
Ms. Monique M. Aduddell and
Mr. Dennis J. Klapperich
Mr. Tom Flanigan and
Mr. Jonathan Stone
Mr. Charles W. Shivery
Mrs. Claudia I. Thesing

Brenda Adkins Zaino
Mr. and Mrs. Daniel Sharp

Current Heritage Society Members

AS OF SEPTEMBER 9, 2024

The NBMAA's Heritage Society was established in 2003, during the Museum's Centennial Year, to honor those generous individuals who have chosen to make a lasting and profound impact on the Museum's future. By including the NBMAA in their estate plans either through a bequest, charitable gift annuity, trust, promised gift of art or other planned gifts, these dedicated individuals are establishing a tangible legacy that lasts for generations.

Anonymous (7)
Michael Antisdale &
Mark Melanson
Frederick & Joan Baekeland
Barbara Belgrade
Mitzi Bowman
David J. & Mona B. Cappuccio
Kenneth J. Carifa &
Mark S. Garavel
Mario Cavallo
Lorey Cavanaugh
Kay Knight Clarke
Brendan & Carol Conry
Cynthia Y. & Martin M.
Cooper, MD
Priscilla Cunningham
Donald Davidson
Donna Dimauro
Abby L. Doolittle
Mary Jane Dunn
Larry & Carol English
James D. Fellows
Rev. Dr. Kathleen Fenaughty

Anita Arcuni Ferrante &
Anthony Ferrante
Karl & Muriel Fleischmann
Judith Gaffney
Sarah (Sally) Given
Alan "Chip" Green, Jr.
David** & Laura Grey
Ken & Donna Griffen
Rev. Paul J. Halovatch
Stephen F. Hard &
Mark Giuliatti
Serena Hatch
Samuel & Marcia Hinckley
David & Sharon Jepson
Richard and Nancy Judd
Dr. Paul Kanev
Sally King
Bradford Korder
Dr.** & Mrs. Charles N. Leach
George S. Lechner
Dr. Dawn Leger
Gerald M. Lemega &
Nancy R. Lemega-Watt

Robert T. Leo, Jr.
Billie M. Levy
Henry Link
Geraldine Lombard
Sanford (Sam) Low
James M. Marinelli
Adrienne Marks
Brian McDonald
Kevin P. McNamara &
Rev. Craig M. Nowak
Joan G. Morgan
Marie-Suzanne Niedzielska
Ann S. Parkhurst
The Michele Parrotta
Living Trust
John & Susan Rathgeber
Belle Ribicoff
Norman & Janet Rodrigue
John** & Caryl Slater
Robert Srulowitz &
Sharon Straka
Todd & Marena Stitzer
Maurine Sutter

Claudia I. Thesing
Helen Thompson
Eleanor Thornton
Michael & Linda Tomasso
Lynne A. Ustach
Lindsley & Gwendolyn**
Wellman
John H.P. & Karen C. Wheat
Richard C. White
Peter & Patricia Wright
Elizabeth G. Yannello

***Deceased*

MAY 14, 2024

Heritage Society Brunch



Exhibitions Support



WOMEN REFRAME AMERICAN LANDSCAPE

Historic Site in association with the New Britain Museum of American Art and is curated by Dr. Nancy Siegel, Professor of Art History at Towson University; Kate Menconeri, Chief Curator and Director of Curatorial Affairs, Contemporary Art, and Fellowship at the Thomas Cole National Historic Site, and Amanda Malmstrom, Associate Curator at the Thomas Cole National Historic Site.

Women Reframe American Landscape: Susie Barstow & Her Circle / Contemporary Practices is made possible by the Warner Foundation.

The project is supported by a grant from the National Endowment for the Arts, Wyeth Foundation for American Art and Tavolozza Foundation. The exhibition and publication are also supported by Jennifer Krieger and Eric Siegel, Rick and Candace Beinecke, Marshall Field V., and Allan E. Bulley, Jr.

In New Britain, the exhibition is presented by the Kathryn Cox Special Exhibitions Fund and Jay Bombara and Allison Reilly-Bombara. Additional generous support provided by The Cheryl Chase and Stuart Bear Family Foundation, The Robert Lehman Foundation, and Marendra and Todd Stitzer.

In-kind support provided by Thomas Mach Interiors, Inc.



ANILA QUAYYUM AGHA: ILLUMINATIONS

Anila Quayyum Agha: Illuminations is made possible by the generous support of Arbella Insurance Foundation, The Bristle Cone Pine Foundation, and the Howard Fromson Endowment for Emerging Artists.

Artwork Courtesy of the artist and the Sundaram Tagore Gallery.



JUSTIN FAVELA: DO YOU SEE WHAT I SEE?

This exhibition is supported by an Anonymous Donor and Claudia I. Thesing.



THE LAND CARRIES OUR ANCESTORS: CONTEMPORARY ART BY NATIVE AMERICANS

The Land Carries Our Ancestors: Contemporary Art by Native Americans is organized by the National Gallery of Art, Washington.

In New Britain, this exhibition is presented by Stanley Black & Decker, The Aeroflex Foundation, The David T. Langrock Foundation, and The Edward C. & Ann T. Roberts Foundation. Generous funding has been provided by Arbella Insurance Foundation; Logan Milliken, Peter Rogers, and the Bristle Cone Pine Foundation; The Gong-Graham Family; and The O'Neil Family—Baltimore, MD.

Additional support provided by Charles and Irene Hamm, Claudia I. Thesing, Linda Cheverton Wick and Walter Wick, Dr. Timothy P. McLaughlin & Dr. Marian Kellner, the Bailey Family Fund for Special Exhibitions. Programming is supported by Evan R. Cowles & Brie P. Quinby; Mary Jane Dunn; and Christine E. Moser Foundation

Development and Membership Events

JULY 20, 2023

Ellen Carey: Struck by Light Members Opening Reception



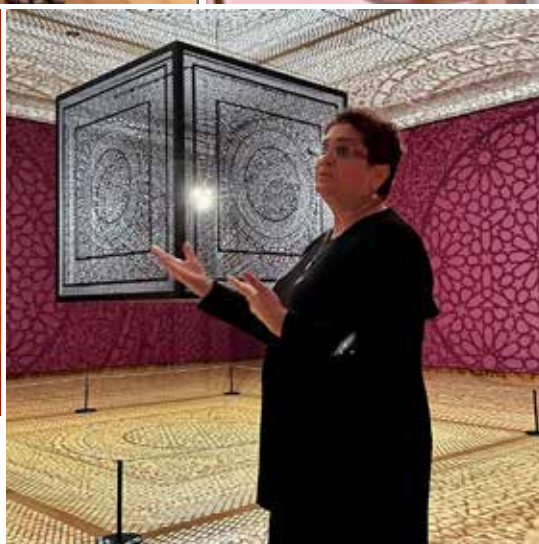
AUGUST 24, 2023

Masterworks of Shaker Design: Mount Lebanon, NY Members
Opening Reception



SEPTEMBER 23, 2023

Nor'Easter: The 53rd Annual
Juried Members Exhibition
Opening Reception



OCTOBER 25, 2023

Anila Quayyum Agha:
Illuminations Members-
Only Preview and
Annual Meeting of the
Membership



NOVEMBER 14, 2023

Member Shopping Day



DECEMBER 6, 2023

Mini Art Party of the Year

FEBRUARY 29, 2024
 Justin Favela: *Do See What I See?*
 Members Opening Reception



FEBRUARY 1, 2024
 Richard Claude Ziemann: *In Nature* Private Opening



MARCH 7, 2024
 Women Reframe
 American
 Landscape
 Tour with Lisa
 Williams for
 Premier Members



MARCH 14, 2024
*HANDLED WITH CARE: Shaker Master
 Crafts and the Art of Barbara Prey*
 Premier Members Opening Reception



APRIL 18, 2024
*The Land Carries Our Ancestors:
 Contemporary Art by Native Americans*
 Members Opening Reception

Premier Membership and Corporate/Institutional Members

AS OF JULY 1, 2024

Grace Judd Landers Society

BENEFACTOR

Dr. and Mrs. Peter P. Yu

John Butler Talcott Society

CHAIRMAN

Mr. and Mrs. Arnold Amstutz
Jay and Allison Bombara
JP Bruemmer Charitable Trust
Dr. and Mrs. Peter D. Byeff MD
Michael and Dona Cassella
Ms. Cheryl A. Chase and Mr. Stuart Bear
The Rhoda and David Chase
Family Foundation, Inc.
Ms. Kay Knight Clarke
Mr. and Mrs. Charles J. Hamm
Mr. Bradford Korder
Claudia Thesing

DIRECTOR

Mr. and Mrs. Kenneth L. Boudreau
Mr. and Mrs. Russell E. Burke
Mr. and Mrs. Coleman Casey Esq
Mr. and Mrs. Scott Celella
Dr. and Mrs. Martin Cooper
Mr. and Mrs. Jack Corroon
Ms. Mary Jane Dunn
Mr. Stephen F. Hard and
Mr. Mark Giulietti
Mrs. Jean H. Holden
Mr. and Mrs. David G. Jepson
Dr. and Mrs. Richard L. Judd
Adlyn and Ted Loewenthal
David and Dorothy Lund
Susan and John Rathgeber
Ms. Madeleine Rudin and
Mr. Grant Johnson
Mr. and Mrs. Thomas Soyster
Mr. Todd Stitzer and
Mrs. Marenda Brown-Stitzer
Mr. and Mrs. Samuel D. Stout
Dr. Susan G.A. Warner

Mr. and Mrs. Steve J. Weiss
Mr. and Mrs. John H.P. Wheat

LEADER

Mr. and Mrs. Brett Abbott
Dr. Duffield Ashmead and Mr. Eric Ort
Sandra and Arnold Chase
Brendan and Carol Conry
Ms. Natasha Dillon
Ms. Marie Dudley
Anita Arcuni Ferrante and
Anthony Ferrante
Robert and Susan Fisher
Mr. Thomas C. Flanigan and
Mr. Jonathan E. Stone
Mr. Neal B. Freuden and
Ms. Andrea F. Levy
Mrs. Elaine M. Hobart
Debra Holcomb and Dale Ashlock
John Howard and Wendy D. Kirkland
John M. and Saundra Jezowski
Mr. Gary W. Knoble
Mrs. Margaret W. Lawson
Ms. Lisa Lazarus
Dr. Timothy P. McLaughlin and
Dr. Marian F. Kellner
M. Stephen and Miriam R. Miller
Ms. Michele Parrotta
Melinda and Paul Sullivan
Mr. Albert W. Tomasso
Dawn Tyler
W. Casey and Kathryn West

AMERICAN ART CIRCLE

Kenneth J. Carifa and Mark Garavel
Brendan Collins and Shelby DiNobile
Halsey and Michele Cook
Kathryn S. L. Cox
Mr. David W. Dangremond
Mrs. Ruth Ann C. Davis
Mr. John E. Dillaway and
Ms. Jessica O'Brien
Mr. and Mrs. John E. Downes III
Ms. Christine M. Doty
Mr. and Mrs. Karl Fleischmann
Sandra Fromson
Ms. Kristi Gafford
Mr. and Mrs. Robert B. Goldfarb

Mr. and Mrs. Pierre Guertin
Ms. Jessica Halverson and
Mr. Jack Torres-Onisto
Mr. and Mrs. Gerald L. Hess
Mr. and Mrs. Michael Humen
Samuel G. and Polly L.P. Huntington
Mr. and Mrs. Jonathan Jarvis
Dr. and Mrs. Theodore H. Johnson
Mr. and Mrs. Harvey S. Kelly
Naomi and Joel M. Kleinman
Mrs. Kathleen Krackzowsky
Joan Leach
Dr. and Mrs. Michael S. Levine
Judie and Coleman Levy
Mr. Thomas Mach
Brenda Manning
James H. and Melinda L. Martin
Harry and Janice Mazadoorian
Mr. and Mrs. Stephen Milliken
Ella Moyer
Mr. Thomas F. O'Neil III and
Ms. Nancy D. O'Neil
Ms. Hope Page and Mr. Albert Norris
Mr. and Mrs. Paul B. Penney
Mr. and Mrs. Joseph Pierz
John and Simone Reynolds
Hal Rives and Margaret Ware
Mr. and Mrs. René Rosado
Patricia and Andrew Salner
Mrs. Mary T. Sargent
Mr. and Mrs. Tony Scherer
Dr. Ted Stebbins
Alan L. Stern, M.D. and
Cyndi Billiam Stern
Mr. and Mrs. Keith Stevenson
Mr. and Mrs. Richard Tedder
Mr. and Mrs. William Watson
Mr. Roy H. Wiseman and
Ms. Lisa C. Kugelman
Dr. and Mrs. Thomas J. Zaccheo MD
Judith Zachs

Contributing Levels

COLLECTOR'S CIRCLE

Mr. Lans Anderson
Mrs. Ellen Babcock

Mr. and Mrs. B. Baiter
 Ms. Ruth Batogowski
 Mr. and Mrs. David Beaulieu
 Mr. and Mrs. Jeffery Buell
 Ms. Christina Cocca
 Mr. and Mrs. Bob Garthwait, Jr.
 Dr. Martha M. Greenwood and
 Mr. David Levin
 Laura R. Harris
 Mr. and Mrs. Richard Healey
 Ms. Margaret Heiner and
 Mr. Oliver Tostmann
 Dr. and Mrs. Donald W. Hight
 Mr. and Mrs. Richard L. Hughes III
 Bruce Jervis and James Kowalski
 Janice and David Klein
 Dr. and Mrs. David A. Kvam
 Mr. and Mrs. Thomas H. Lorch
 Ms. Oscar Harrison Mayer
 Mr. and Mrs. William J. McCue
 Ms. Kathy Mikulski
 Ms. Maria Miller and
 Mr. John Charles Thomas
 Mr. Robert Murzyn and
 Mrs. Carol Larco-Murzyn
 Mr. Andrew Obelnicki and
 Ms. Kathleen Kelliher
 Mr. Borden Painter, Jr.
 Mr. and Mrs. Scott Perzan
 Mr. Paul R. Petrie and Ms. Allison T. Hild
 Mr. and Mrs. David E. Polk
 Mr. and Mrs. Stuart Small
 Mr. Vincent Turley and
 Ms. Fran Barringer
 Mr. and Mrs. Cecil Ursprung
 Mr. Andres Verzosa and
 Mr. David Whaples
 Lin Wellman
 Mr. Philip Wellman and Ms. Leslie Smith
 Dr. William B. White and
 Ms. Krista Weaver
 Mr. Walter Wick and
 Ms. Linda Cheverton-Wick
 Ms. Jane Wright Wolf and
 Mr. Richard B. Wolf
 Mr. and Mrs. Arthur Wyszomirski

ARTIST'S CIRCLE

Mr. and Mrs. Allen Adamczyk
 Mr. and Mrs. Douglas Adkins
 Mr. and Mrs. Len Albert
 Leslie S. Alexander and Norris Manser
 Mr. and Mrs. Raymond S. Andrews Jr.
 Mr. Richard D. Angotta
 Mr. and Mrs. Roger Astmann
 Mr. Ivan A. Backer and Ms. Paula Fisher

Elizabeth Dee Bailey
 Mr. James A. Baldwin and
 Mr. William C. Baldwin
 Mr. Thomas J. Barry
 Mr. and Mrs. Paul Baylock
 Ms. Clare F. Bean and Mr. Dana DiPietro
 Ms. Sheryll Bedingfield
 Mr. and Mrs. Jack A. Bergquist
 Mr. David Berto
 Mr. and Mrs. Warren J. Blessing
 Dr. and Mrs. Arthur T. Blumer
 Laura Boehm
 Mr. and Mrs. Mark J. Bonney
 Mrs. Ola Bossio
 Mr. and Mrs. Tom Bradley
 Phil Brencher
 Mr. and Mrs. Seth Brewer
 Mr. and Mrs. Chester J. Brodnicki
 Dr. Ronald B. Brown and
 Rev. Jane H. Rowe
 Mr. Joseph Buchek and Dr. Susan Buchek
 Mr. John F. Byrnes
 Ellen Carey
 Ms. Cynthia A. Carlson
 Ms. Patricia Carrigan
 Mr. and Mrs. Ronald A. Carubba
 C.B. and M.S. Casinghino
 Mrs. Lynn F. Cavo
 Ms. Janine Chapdelaine
 Mr. Richard Charnick and
 Mr. Richard Mayo
 Ms. Carol L. CheneyHendricks Churchill
 M. R. Cipriano
 Dr. Jessica Clement
 Mr. Gary Cluen and
 Mrs. Cathy Bysiewicz-Cluen
 Ms. Mary J. Cockram and
 Mr. David A. Corrigan
 Mrs. Michele Cohen
 Mr. and Mrs. Harold L. Colvocoresses
 Mr. Len Comeau
 Mrs. Kathleen S. Conran
 Suzanne and Frank Czerwinski
 Mr. and Mrs. John D'Agostino
 Mr. Bryan C. Daleas
 Mr. and Mrs. David Davison
 Carol M. De Berry
 Mr. and Mrs. Bruce Degen
 Mr. Paul Deleeuw and
 Ms. Jeanne Leibham
 Mr. and Mrs. Lenny Diamond
 Edward H. Dietrich and
 Reyes Pinar Benjumea
 Ms. Joanna Dilion and Mr. Mark Goduto
 Mr. and Mrs. Benjamin Doolittle
 Helen Newell Douglas

Ms. Diane A. Dounouk
 Ms. Elizabeth F. Drake and
 Ms. Loretta Drake Carignan
 Mr. David Dunlap and Ms. Bridget Gray
 Elaine Dymczyk
 Liz Egan
 David and Kathleen Elmore
 Elizabeth and Anthony Enders
 Mr. and Mrs. Robert Engling
 Mr. and Mrs. Peter Fagan
 Dick and Donna Fanelli
 Ms. Kathleen Fekete
 Charley and Mary Ferrucci
 Gay Fialko and Thomas Fialko
 Mr. and Mrs. Dan Fine
 Mr. and Mrs. Robert H. Forrester
 Ms. Nanci D. Fox and
 Mr. Garrison Leykam
 Dr. Hilary E. Freedman and
 Mr. Howard R. Zern
 Ms. Karen Freilich
 Ms. Doreen Fundiller-Zweig and
 Dr. Elliot Zweig
 Joseph Garner and Leslie Garner
 Mr. and Mrs. Ken Geisler
 Mr. and Mrs. Mitchell Gilbert
 Ms. Jennifer Glick
 Dr. Jordan Goetz MD
 Mr. and Mrs. Joseph Goldberg
 Mr. and Mrs. Timothy J. Grace
 Mr. Peter Grant and Dr. John Quinn
 Mr. and Mrs. Marc Green
 Arthur and Zabelle Krasow Greenblatt
 Mr. Thomas Gruber and
 Ms. Elaine Widmer
 Marie S. Gustin
 Mrs. Susan M. Hall
 Dr. Alexandra Harris and
 Ms. Charlene C. Li
 Mr. James Hartung and
 Ms. Patricia Jagoe
 Mr. and Mrs. Michael Held
 Drs. R.V. and Patricia Hensley
 David Heskes
 Mr. and Mrs. Mark Hodson
 Mr. and Mrs. Richard Hoff
 Ms. Janet L. Hoffman
 Mr. and Mrs. G. Norman Holland
 Mr. and Mrs. Thomas Holt
 Mr. and Mrs. Wesley W. Horton
 Mr. James Hourihan
 Mr. and Mrs. Brian Hubbard
 Mr. and Mrs. R. Alan Hunter
 Mr. Albert G. Ilg
 Mr. and Mrs. James W. Jacobs
 Mrs. Nancy Jezowski

Sally and Carl Johnson
 Ms. Donna Jones-Searle and
 Mr. Bill Searle
 Mr. Ted Kaplan and
 Ms. Roberta Woronow
 Mr. David S. Keating and
 Rev. Anne E. Aurand
 Mr. Robert D. Keder
 Joan Lazar Kemler and Barry J. Kemler
 Mr. Austin King
 Mr. Bill Knight and Ms. Jill Adams
 Ms. Deborah Koltenuk and
 Mr. Christopher Merrow
 Mr. Walter Kosman
 Mr. and Mrs. Barry Kosmin
 Irene and Ken Kowalski
 Ms. Sylvia Krajewska and
 Mrs. Jadwiga Krajewska
 Mr. and Mrs. Donald H. Kray
 Ms. Alyssa Krom and
 Mr. Jonathan Horton
 Mr. Randy Kurker-Stewart
 Ms. Melissa Lake
 Marilou and Mike Lang
 Mr. Thomas J. Lanson and
 Mrs. Lori Becker-Lanson
 Mr. and Mrs. Travis Lappe
 Dr. and Mrs. Richard E. Lau
 Mr. and Mrs. William A. Lazarek
 Dr. Dawn Leger
 Mr. Gerald M. Lemega and
 Ms. Nancy R. Lemega-Watt
 Robert T. Leo, Jr.
 Ms. Shirley Leong
 Mr. and Mrs. Mark Lescher
 Mr. and Mrs. Michael B. Levin
 Andrew and Lauren Lieberman
 Mr. James Ligas and Ms. Mary Nerbonne
 Dr. and Mrs. Carl W. Lindquist
 Mr. Rick Littlefield and
 Ms. Maureen Post
 Mr. James Lizzi
 Mr. Jeremy J. Lucas and
 Ms. Danielle Wiston
 Mrs. Sylvia Wilson Lucas
 Ms. Lanette Spranzo Macaruso
 and Mrs. Linda L. Klopp
 Mr. and Mrs. Robert J. Mandel
 Mr. and Mrs. Guy Marhewka
 Mr. Micheal Marques and
 Ms. Rebecca Maloney
 Mr. and Mrs. Thomas S. Marriion
 Mr. and Mrs. Hunter Mathena
 Dr. Melissa Matthes
 Ms. Lynne C. Mazadoorian and
 Mr. John M. Lockhart

Ms. Anne McAloon
 Dr. and Mrs. Gerald McAuliffe
 Mr. William F. McAvoy and
 Ms. Nancy Tomaselli
 Mr. Brian McClear
 Ms. Elisa McClear
 Jean and David McQuillan
 Mr. Tracy Midgley and
 Ms. Joncia Lytwynec
 Ms. Laura Lee Miller and
 Mr. Brian M. Bowes
 Mr. and Mrs. Robert M. Miller
 Dr. and Mrs. Stanislav Moline
 Mrs. Eleanor M. Mullen
 Ms. Nancy Najarian
 Mrs. Erin P. Nazzaro
 Dr. Brenda A. Nurse MD and
 Mr. Kenneth A. Hampton
 Mr. and Mrs. Steve Ozga
 Rev. Joseph L. Pace
 Ms. Katherine Papathanasis
 Dr. and Mrs. Michael Passaretti
 Mr. Greg Pastor and
 Ms. Heather Blum-Pastor
 Mrs. Sibyl A. Pellum
 Ms. Louise Perkins and Dr. Jeff Glans
 Dr. William A. Petit Jr.
 Kristan Pierz and Brian Molinari
 Mr. and Mrs. Elliott Pollack
 Mrs. Catherine Probolus
 Christine Raczka
 Mr. Theodore Raczka and
 Ms. Nancy Conaway-Raczka
 Ms. Erika Reen
 Mr. and Mrs. James M. Reidy, Jr.
 Mr. John Michael Reynolds
 Mr. and Mrs. Dale A. Richter
 Mr. and Mrs. Ian C. Rickard
 Robert and Brenda Roggeveen
 Mrs. Naomi Rothfield
 Ms. June C. Roy
 Dr. Elizabeth N. Rumohr
 Ms. Jen Ryan
 Mr. and Mrs. Richard Sadler
 Paul and Annette Salina
 Mr. Brad J. Schide
 Mr. and Mrs. George Sebastian-Coleman
 Mr. Ted Sewitch and Ms. Nancy Sewitch
 Mr. and Mrs. Daniel Sharp
 Dr. Jonathan Siegel
 Judith Silver
 Mrs. Hope V. Sim
 Mr. Richard Simeone and
 Ms. Lyn Brakeman
 Robin Simmons
 Mr. and Mrs. Kenneth W. Simon

Mrs. Susan L. Simonds
 Dr. and Mrs. George E. Skarvinko MD
 Mr. and Mrs. Richard Slater
 Mrs. Mary Jane Sobinski-Smith
 and Mr. William Smith
 Mr. John Stephenson and
 Ms. Deborah Boynton
 Mr. Mike Stockman and
 Ms. Carrie Stockman
 Ms. Maurine Sutter
 Mr. and Mrs. James G. Sutton
 Ms. Debra L. Szabo
 Mr. Andrew Szegedy-Maszak
 and Ms. Elizabeth Bobrick
 William and Barbara Taylor
 Mr. Jeffrey Tedesco
 Douglas and Nancy Teed
 Ms. Ann E. Thomas and
 Mr. Michael B. Bonzagni
 Mrs. Nancy Tomasso
 Mr. Humphrey Tonkin and
 Ms. Jane Edwards
 Mr. and Mrs. Tom Trutter
 Lynne A. Ustach, Esq.
 Ms. Susan Vieira and
 Mr. Richard Wiederhorn
 Ms. Katherine Wadsworth
 Dr. Cliff W. Wagner and
 Ms. Kimberly C. Burris
 Mrs. Mary-Jo W. Warren
 Mr. and Mrs. Rick Warters
 Mrs. Sylvia E. Webb
 Ms. Patricia C. Wehrli-Zemsta
 Mary and Mark Wendell
 Mr. and Mrs. Delmer Weston
 Mr. John D. Whalen and
 Ms. Dale Anne Whalen
 Mrs. Karoll Wiater
 Susan Williams
 Mr. and Mrs. John Wischenbart
 The Wiszniak Family
 Ms. Mary M. Wynn
 Mr. and Mrs. Jonas Zdanys
 Mrs. Pauline Zimmerman

Corporate/Institutional Members

BoneeWeintraub, LLC
 Central Connecticut State University
 Delamar West Hartford
 Hartford Steam Boiler Inspection
 & Insurance Co.
 Law Office of Kevin C. Ferry, LLC
 Stanley Black and Decker
 University of Hartford

Art Party of the Year Sponsors

Diamond Sponsors

Hartford Steam Boiler
Inspection and Insurance
Company
Stanley Black & Decker

Gold Sponsor

Chase Family Foundations
Webster Bank

Silver Sponsors

Barnes Group
SEI

Bronze Sponsor

Hartford HealthCare
& Hospital of Central
Connecticut
The Projects Group

Copper Sponsors

Downes Construction
Company
Hospital for Special Care
Sharon and Dave Jepson

Pewter Sponsor

Central Connecticut State
University

Small Business Sponsors

Associated Insurance
Assured Partners
CohnReznick
DiStefano Hair
Restoration Center
Gaffney, Bennet and
Associates

Invitation and Printing Sponsor

Marketing Solutions
Unlimited, LLC

Art Party of the Year Patron Tables, Tickets & Table Hosts

PATRON TABLES

Dr. and Mrs. Peter Yu

PATRON TICKETS

Dr. Arnold Amstutz and
Eleanor Seepes
Duffield Ashmead
and Eric Ort
Eric Ben-Kiki and
Katie Bradley
Gail and Peter Byeff
John Bombara and
Allison Reilly-Bombara
Dona and Michael Cassella
Hartford Art School
John and Sandra Jezowski
Drs. Timothy McLaughlin
and Marian Kellner
Donna and Sam Stout
Claudia I. Thesing

TABLE HOSTS

Dr. and Mrs. Peter Byeff
Dona & Michael Cassella
Hartford Art School &
The Hartt School Table
Donna & Sam Stout
Albert Tomasso
Dr. and Mrs. Peter Yu

Donors to the Art Party of the Year

Dr. Letterio Ascuto
Mr. and Mrs. James C. Boyle
in honor of David Polk
Kay Knight Clarke
Anita & Anthony Ferrante
Mr. William Gray and
Mrs. Diana Romney Gray
in honor of David Polk
Mrs. Jean H. Holden
Brenda Manning
Susan & John Rathgeber
William and Marianne
Watson

John H.P. and Karen
Cronin Wheat *in honor of*
Dr. Peter Yu and Grace Yu
Linsley Wellman

Special Thanks to

Audra Antrum Events
DORO Catering
Martin and Cynthia Cooper
DFX Entertainment
Nat Reeves
Shortell Framing
Tiny Bubbles on Tap
The Staff and Volunteers of
the New Britain Museum
of American Art

Donors to the Auction

Angelo's Market
Barnes Foundation
Dr. Peter D. and Gail A. Byeff
Ellen Carey
Don Carter/
Edgar Allan Slothman
Christine Chaise-Greenwood
Christie's
Kay Knight Clarke
Cynthia Y. Cooper
Patricia Corbett
Delamar Southport
Dom's Coffee
Cathy Doocy
Doro Restaurant Group
Neal Freuden and
EnviroPlan LLC
Peter Greenwood
Zbigniew Grzyb
Hartford Symphony
Orchestra
Hartford Stage
Hill-Stead Museum
Douglas Hyland
Martin Kline
John M. Letizia, Atty.
Suzanne & Dean Levy
Suzanne Levy
Carol LeWitt
John Lo Presti
Cynthia Mullins
NBMAA Board of Trustees
Noah Webster House
Mario Pires

James Prosek
Schoelkopf Gallery
TheaterWorks Hartford
Albert Tomasso
Wadsworth Atheneum
Brian Walters
John Wheat
Eli Wilner & Company
Mini Masterpiece Artists
Barbara J. Alex
Paul Baylock
Lindsay Behrens
Matthew Best
Kathleen Casey Brooks
Margot Callahan
Catherine Christiano
Cynthia Cooper
Patricia Corbett
Carol M. de Berry
Clinton A. Deckert
Cathy Doocy
Andrea Easton
Kate Emery
Daisy Gesualdi
Michaela Gorski
Eddie Hall
John Hsu
Reneé S. Hughes
Karen Israel
Janet Lage
Edith Skiba LaMonica
Carol Lavoie
Marny Lawton
Janet Leombruni
Deborah Leonard
I.S. Levitz
Suzanne Jill Levy
Barbara Maiser
Brenda Manning
Chelsea Marti
William McCarthy
Melissa Meredith
Mike Mindera
Shirley Mae Neu
Paul Ott
Jane Rainwater
Stephanie Rogers
Shawna Rosol
Suzanne Scott
Michael Sundra
Rashmi Talpade
Christian Torres
MG Trask
Sandy Welch
NC Whitcher
Rachael Whitney

Library Pass Members

Acton Public Library	Hamden Public Library	Terryville Public Library
Ansonia Public Library	Hartford Public Library	The Licia & Mason Beekley Community Library
Avon Free Public Library, Inc.	Harwinton Public Library	Thomaston Public Library
Babcock Library	Henry Carter Hull Library	Tolland Public Library
Bakerville Library	Howard Whittemore Library	Torrington Library
Beacon Falls Public Library	James Blackstone Memorial Library	Tunxis Community College
Beardsley and Memorial Library	Jonathan Trumbull Library	Wallingford Public Library
Bentley Memorial Library	Kent Memorial Library	Watertown Library Association
Berlin-Peck Memorial Library	Killingworth Library Association, Inc.	Welles Turner Memorial Library
Bethel Public Library	Levi E. Coe Library	West Hartford Public Library
Bloomfield Public Library	Lucy Robbins Welles Library	Westbrook Public Library
Booth & Dimock Library	Lyme Public Library	Weston Public Library
Brainerd Memorial Library	Manchester Public Library	Westport Library
Bristol Public Library	Mansfield Public Library	Wethersfield Public Library
Brookfield Library	Meriden Public Library	Willimantic Public Library
Burlington Public Library	Middlebury Public Library	Willington Public Library
Burnham Library	Milford Public Library	Willoughby Wallace Memorial Library
Canton Public Library	Minor Memorial Library	Windsor Public Library
Case Memorial Library	Monson Free Library	Wolcott Public Library
Chaplin Public Library	Morris Public Library	Woodbridge Town Library
Cheshire Public Library	New Britain Public Library	Woodbury Public Library
Chester Public Library	New Fairfield Free Public Library	
Clark Memorial Library	New Milford Public Library	
Cora J. Belden Library	Norfolk Library	
Cragin Memorial Library	North Haven Memorial Library	
Cromwell Belden Public Library	Old Lyme Phoebe Griffin Noyes Library	
Danbury Library	Plainville Adult and Continuing Education	
Deep River Public Library	Plainville Public Library	
Douglas Library	Plumb Memorial Library	
Durham Public Library	Portland Public Library	
E.C. Scranton Memorial Library	Prospect Public Library	
East Granby Public Library	Rathbun Memorial Library	
East Haddam Free Public Library	Richmond Memorial Library	
East Hampton Public Library	Rockville Public Library	
East Hartford Public Library	Russell Library	
East Lyme Public Library	Salem Free Public Library	
Edward Smith Library	Saxton B. Little Free Library	
Enfield Public Library	Scoville Memorial Library	
Essex Library Association	Sherman Library	
Fairfield Public Library	Silas Bronson Library	
Farmington Library	Simsbury Public Library	
Forbes Library	Somers Public Library	
Goshen Public Library	South Windsor Public Library	
Granby Public Library	Southbury Public Library	
Guilford Free Library	Southington Library and Museum	
Gunn Memorial Library	Subase New London MWR Library	
Hall Memorial Library		



Volunteers and Docents

Volunteers

Molly Agape
Marie Bogdanski
Maria Calabrese
Marie Carlson
Roberto Carrero
Anne Carubba
Laureen Corazzini
Carol Courtney
Carol Davis
Mary Jane Dunn
Linda Dziedzic
Fiona Elias
Shelby Finlay
Ellen Fisher
Omar Flores
John Floyd
Lynn Follis
Elizabeth Forsythe
Lizzie Frankle
Marissa Gallucci
Mark Giuliatti
Alison Guthrie
Mike Guthrie
Stephen Hard
Melissa Haseley
Jan Hasenjager
Catherine Heinz
Elaine Hobart
Joanne Humen
Mike Humen
Nadia Humen
Gretchen Kelly
Marie Koller
Chloe Lacoutour
Barb Laurain
Ella Levy
Susan Livingston
Geraldine Lombard
Maria Maldonado
Marsha Mason
Nicky McGuire
Abigail Mitchell
Jeffrey Mitchell
Nancy Najarian
Meghan Riedel

Izabella Rosa
Valerie Rosa
Tara Rosner
Joyce Schroeder
Jill Scully
Kimaira Serpa
Daniel Shear
Judy Silver
Pam Simon
Susan Simonds
Ruth Swisher
Malcom Thomas
Ramona Thomas
Anna Tufankjian
Lucy Velez

Touring Docents

Ron Abbe
Jeanie Babineau
Sheri Barnicle
Carol Benjamin
Margaret Bercovitz
Joanna Biskupski
Irene Braren
Rebecca Brito
Kathy Butler
Mary Cannella
Mona Cappuccio
Marie Carlson
Tracy Chinnici
Carol Courtney
Diana Creamer
Mary Jane Dunn
Hilary Freedman
Jackie Fastaia
Corinne Ferola
Deb Ferrari
Ellen Fisher
Gail Frahm
Hilary Freedman
Jan Hasenjager
Clare Gatta
Terry Gianzinetti
Maxine Gleason
Janice Hasenjager
Sharon Heyman

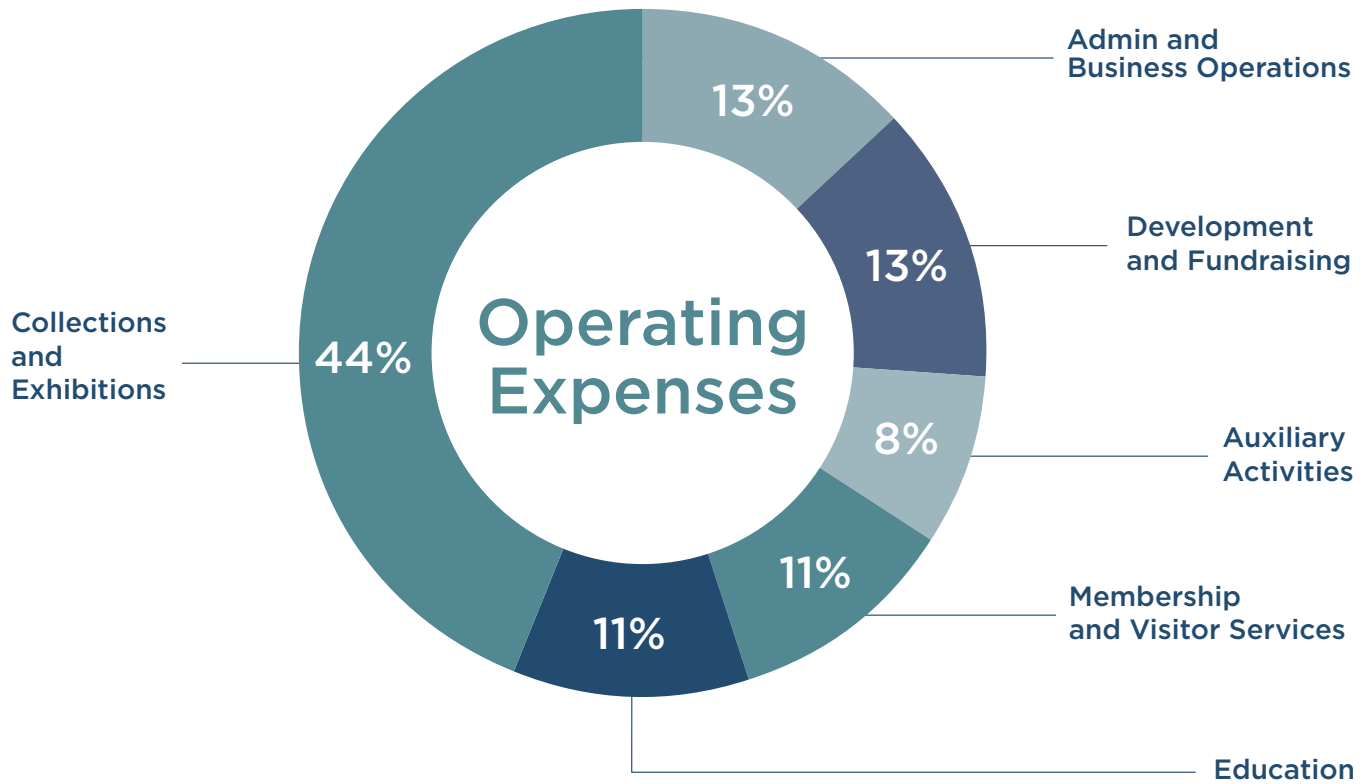
Laura Higgins
Elaine Hobart
Angela Kane
Alma Kearns
Joan Kennedy
Lori Klimach
Carol Lacoss
Marilou Lang
Andrea Levy
Pamela Lockard
Geraldine Lombard
Katherine Lotko
Brenda Manning
Barbara Mendelson
Les Milch
Margaret Milch
Peggy Murphy
Luc Ouellette
Sally Oxman
Donna Ozga
Kathryn Papadakis
Beverly Pierz
Jessica Probolus
Carol Raza
Dori Reidy
Suzanne Roy
Marianne Salerno
Katharine Shaskus
Anne Sheffield
Judy Silver
Pam Simon
Susan Simonds
Susan Skarvinko
Susan Smayda
Pamela Sorensen
Judy Taddeo
Mary Talbot
Diane Therrien
Anna Tufankjian
Dianne Veale
Kathy Wadsworth
Jill Weinberger
Liz Wells
Mary Wilde
Roberta "Bobbie" Woronow

Financials

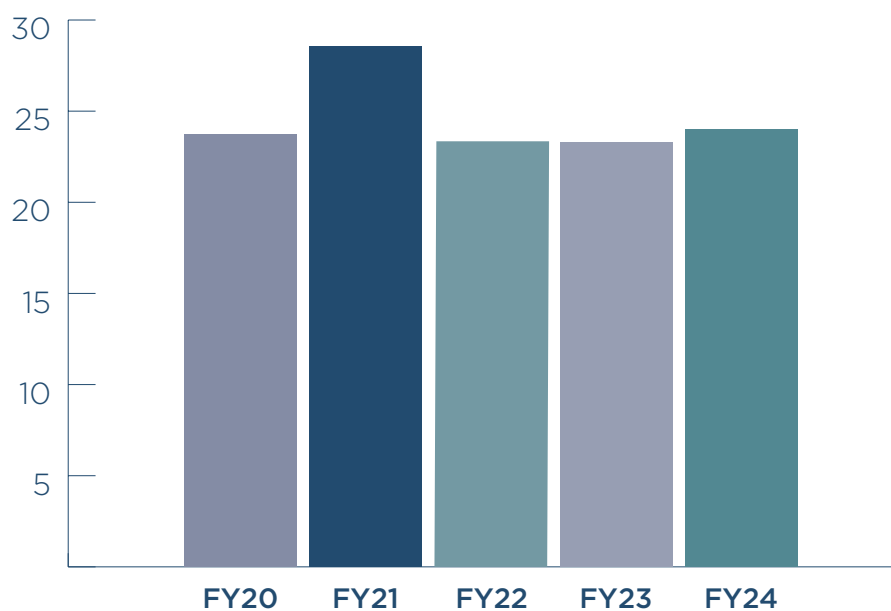
CONDENSED FINANCIAL STATEMENTS AS OF JUNE 30, 2024

(unaudited, in thousands)

Condensed Statement of Financial Position	FY24	FY23
ASSETS		
Cash	\$351	\$167
Receivables	61	271
Prepaid expenses	110	122
Inventory	217	200
Investments at market value	23,872	23,220
Beneficial interest in perpetual trusts	1,370	1,221
Land, property, and equipment (net)	22,021	21,926
Total assets	\$48,002	\$47,127
LIABILITIES & NET ASSETS		
Liabilities	1,244	367
Net assets	46,758	46,760
Total liabilities and net assets	\$48,002	\$47,127
Condensed Statement of Activities		
OPERATING REVENUE		
Contributions—gifts, grants, and sponsorships	\$1,536	\$1,061
Earned revenue—memberships, programs, admission, other	1,306	1,147
Special events	208	219
Investment income for operations	1,608	1,357
Net assets released from restrictions	345	476
Total operating revenue	\$5,003	\$4,260
OPERATING EXPENSES		
Program expenses	\$3,595	\$3,142
Development and fundraising	630	468
General and administrative	621	561
Total operating expenses	\$4,846	\$4,171
NET CHANGE IN ASSETS FROM OPERATIONS	\$157	\$89
Income (loss) from investments, net of draw from operations	539	826
Non-operating Contributions—gifts and grants	815	436
Deaccessioned art work	-	1
Depreciation	(896)	(870)
Acquisitions of art	(267)	(954)
Other non-operating expenses	(5)	(2)
Net assets released from restrictions	(345)	(476)
Net change in assets	\$(2)	\$(949)



Investment Balances (Market Value)



NEW BRITAIN MUSEUM OF AMERICAN ART

56 Lexington Street
New Britain, CT
(860) 229-0257



GENERAL ADMISSION

Members FREE
Adults \$20
Seniors AGE 62 AND UP \$15
College Students \$10
6-17 years old \$10
5 and under FREE

MUSEUM HOURS

Mondays CLOSED
Tuesdays CLOSED
Wednesday-Sunday
10 a.m.-5 p.m.
Thursdays 10 a.m.-8 p.m.

SATURDAY ADMISSION

Free from 10 a.m.-noon
thanks to support from
the American Savings
Foundation.

MUSEUM CAFE

Wednesday-Sunday
10 a.m.-2:30 p.m.

ACCESSIBILITY

Please inquire at the
Front Desk for any
assistance you may re-
quire. We are wheelchair
accessible and have two
wheelchairs available free
of charge.

DIGITAL

www.nbmaa.org
facebook.com/nbmaa
twitter.com/nbmaa
instagram.com/nbmaa56
tiktok.com/@nbmaa56