



NEW BRITAIN MUSEUM OF AMERICAN ART

Annual Report | 2022-2023

ANNUAL REPORT 2022-2023

New Britain Museum of American Art

THIS ANNUAL REPORT IS DEDICATED TO THE LIFE AND LEGACY OF
CHRISTINE SHIVERY 1948-2023

04	Director’s Report and Year Overview
15	Organization
19	Acquisitions and Loans
23	Development
38	Members
43	Volunteers
44	Financials

Cover: Ansel Adams, *Nevada Fall, Rainbow*, c. 1947, Silver gelatin print, 9 1/2 x 7 1/8 in. (24.1 x 18.1 cm), Collection of
Andrea Barton, L.2016.8.12LTL

OUR THANKS TO NBMAA SUPPORTERS



MESSAGE FROM THE CEO & BOARD CHAIR

Dear Friends,

We are thrilled to report that the determination, creativity, and teamwork applied to bold decisions executed by the Museum's staff and leadership has resulted in a remarkable year of growth for 2023.

What we are most proud of is that our talented team stepped up to achieve so many of the lofty goals set forth at the beginning of the year. These included ambitious targets for admissions, amenities, and rentals income, as well as a goal to sell 1000 new and reinstated Memberships. Ultimately, we are thrilled to report that we not only achieved the aforementioned, we surpassed them in several areas.

The NBMAA experienced its highest general attendance, program participation, and program revenue since 2019 (with O'Keeffe); highest admission revenue since 2016 and highest Museum Store revenue in at least seven years (with the exception of 2019); and Museum Café income that surpassed budgeted revenue by 9%. We are also pleased to report the Museum's facility rentals program is back on pace with revenue goals.

In addition to impressive fiscal growth, the NBMAA continued broadening audiences with a truly diverse portfolio of content offerings and engagement opportunities. 2023 was most definitely a year for families, as we devised strategies to make visitors of all ages feel welcomed in anticipation of *Walter Wick: Hidden Wonders!* These efforts, combined with the wildly-popular content, provided a gateway to the Museum for hundreds and hundreds of first-time visitors from a wide array of home zip codes. Family fun continued throughout the summer with Hidden Wonders Summer Camp at full capacity over four weeks.

The blockbuster Walter Wick show was part of a dynamic 2023 exhibition season that opened with great American photographers Ansel Adams and Edward Burtynsky, continued with beloved regional artist Elizabeth Gourlay, and concluded with a celebration of The Black Matriarchs of New Britain in historic Landers House. With monthly free Community Celebrations, multiple adult learning opportunities each week, thousands of school group visitors, and a lively after-hours social scene, just to mention a few, engagement flourished in 2023.

This next exhibition season features a lineup of American Artists reflecting the most diverse artistic perspectives in the Museum's recent history. We invite you to preview the tapestry of exciting projects curated for 2023-2024 on our Museum's exhibition web pages.

The entire Museum community mourns the loss—and celebrates the life of—longtime supporter and Trustee Christine Shivery (1948 - 2023), who passed on June 14. A Trustee for a decade, generous NBMAA donor, and talented artist in her own right, Chris left a lifelong legacy through her generosity, service, and friendship to the New Britain Museum of American Art.

Finally, we wish to acknowledge this year's celebration of philanthropic generosity. This includes a multiyear grant from the Robert C. Vance Foundation—which led to the recent landmark purchase of Robert S. Duncanson's *Landscape*, 1870, now on view as one of our greatest 19th century paintings. It also includes multi-year gifts from the O'Neil Family encompassing 32 works by leading photographers – one of the most significant donations of artwork received by the NBMAA in its history.

This kind of generosity combined with hard work and determination has continued to secure the Museum's future fiscal stability. We wish to thank everyone who had a hand in this year's vibrant success.



Brett Abbott
Director and CEO



Dona V. Cassella
Chair of the Board of Trustees



► 30 AMERICANS

Last summer began with the groundbreaking exhibition *30 Americans*. Drawn from the Rubell Museum in Miami, Florida, and curated by scholars Dr. Dann J. Broyld, Provost Nicole Stanton, and Dr. Brittney Yancy, *30 Americans* told the story of Black humanity through the gaze of some of the most significant Black artists of the last four decades. This special exhibition and the well-attended related programming encouraged active conversation among Museum visitors.



◀ NOR'EASTER: THE 52ND ANNUAL JURIED MEMBERS EXHIBITION

The Annual Juried Members Exhibition is the New Britain Museum of American Art's opportunity to expose contemporary visual arts to a wide audience. Each year, this prominent showcase in the Northeast region highlights the exceptional work of emerging and established artists in all media.

YEAR IN REVIEW

BRINGING ART AND
COMMUNITY TOGETHER

► RASHMI TALPADE: PIECING TOGETHER A NEW BRITAIN STORY

Wallingford, Connecticut-based artist Rashmi Talpade uses photo-collages to create works inspired by real and imaginary places. *Piecing Together a New Britain Story* was a collaborative community project created by local residents under the guidance of the artist over a period of four months. Community members were invited to submit images of New Britain, which were then printed and glued by over 150 participants to create three realistic but imaginary cityscapes of familiar buildings and spaces.



◀ GLASS IMPRESSIONS: VITREOGRAPHS FROM THE NBMAA

Presented at the Delamar West Hartford, *Glass Impressions* featured a suite of vitreographs—prints produced with a glass plate—by acclaimed artists Clarence Morgan, Judith O'Rourke, and Therman Statom. Dazzling in color and dynamic in composition, these vibrant works that reflect aspects of our world were drawn from the collection of the NBMAA and were on view for the first time ever. The installation took place in conjunction with the related exhibition of vitreographs entitled *Mildred Thompson: Cosmic Flow*, at the NBMAA from May through November 2022.



► **ELIZABETH GOURLAY: ECLECTIC THREADS**

In the fall, the NBMAA launched its newest series of exhibitions in our recently restored Landers House, highlighting local artists that contribute invaluable to the cultural enrichment of our region and beyond. We were thrilled to welcome Chester-based artist Elizabeth Gourlay in her first solo exhibition at the Museum, entitled *Elizabeth Gourlay: Eclectic Threads*.

◀ **AMERICAN REALISM TODAY**

Curated by acclaimed artist Neil Jenney, *American Realism Today* celebrated the rich tradition of Realist art in America while reflecting the innovative spirit of our contemporary times. The exhibition encompassed more than 50 paintings, sculptures, and works on paper, by a network of 21 artists working across generations, including Robert Lobe, Kathleen Gilje, Joseph McNamara, James Prosek, Faith Ringgold, and many others.



◀ **CELEBRATING GIFTS FROM THE O'NEIL FAMILY**

In the winter, the NBMAA presented two exhibitions inspired by a major donation of important contemporary photographs by Baltimore-based collectors Nancy and Tom O'Neil: *Edward Burtynsky: Earth Observed* (November 17, 2022-April 16, 2023) and *In Focus: Photographs from the O'Neil Collection* (December 8, 2022-July 2023). The artist's largest retrospective in the Northeast, *Edward Burtynsky: Earth Observed* examined the artist's career-long documentation of human impact on nature and comprised examples from nearly every series of Burtynsky's output from the 1980s to today. *In Focus: Photographs from the O'Neil Collection* at the Delamar Hotel in West Hartford, Connecticut, featured photographs by Abelardo Morell, Richard Kagan, George Tice, Fazal Sheikh, Chan Chao, Ben Marcin, Johnathan Anderson, and Edwin Low.



New Acquisition

ROBERT S. DUNCANSON, *LANDSCAPE*, 1870

In February, the NBMAA was thrilled to display a new major acquisition, Robert S. Duncanson's *Landscape*, 1870, made possible through a generous multiyear grant from the Robert C. Vance Foundation. Within the context of NBMAA's 19th-century landscape gallery, Duncanson's work introduces important insights into relationships and opportunities that existed across the network of artists represented. Duncanson is now recognized as a premier 19th-century landscape artist, who broke barriers and paved the way for landscape painters and Black artists for generations to follow.



◀ **SUPPORTING LIFE-LONG LEARNING AND ENGAGING LOCAL ARTISTS**

Through Studio Classes taught by local artists and Artist Talks that relate to the Museum's permanent collection and special exhibitions, the Education Department continues to highlight the impressive level of artistic talent in Connecticut, while providing art-making and learning opportunities to Museum visitors of all ages.

► **SOCIAL PROGRAMS AND RENTALS**

The Museum serves as a cultural hub drawing new and wider audiences to enjoy social events and music programs, including First Friday, Museum After Dark, Art Happy Hour, Craft Sippin' in New Britain, and Sunday Music Series. Also, the community has activated Museum space for private events—such as weddings, memorial services, and private parties—with a total of 34 facility rentals this year.



◀ **MASTERWORKS OF THE SANFORD B.D. LOW ILLUSTRATION COLLECTION**

One of the most unique and exceptional aspects of the New Britain Museum of American Art's permanent collection is The Sanford B. D. Low Illustration Collection, named in honor of the Museum's first director—a passionate advocate of American illustration. *Masterworks of the Sanford B. D. Low Illustration Collection* showcases some of the collection's finest examples and features iconic and groundbreaking artists such as Maxfield Parrish (1870-1966), Norman Rockwell (1894-1978), Steven Dohanos (1907-1994), and many others.



◀ ANSEL ADAMS AND THE LEGACY OF THE AMERICAN LANDSCAPE: PHOTOGRAPHS FROM THE NBMAA

Ansel Adams and the Legacy of the American Landscape considered Adams' immeasurable contributions to photography, art, and environmental advocacy over the past century. This exhibition placed iconic images by Adams in dialogue with works by photographers who practiced during and after his life, to provide deeper perspectives on themes central to his practice, demonstrate the power of his legacy, and inspire consideration about the state of the American landscape in the 21st century.

▶ MASTERWORKS OF SHAKER DESIGN: A TALE OF TWO ENFIELDS

Masterworks of Shaker Design: A Tale of Two Enfields was the first of a planned series of exhibitions designed to highlight examples of the finest Shaker craftsmanship from the past 175 years. Curated by M. Stephen Miller, each exhibition focuses on objects from a single or pair of Shaker communities or from loans from particular collections. In most instances, collaborations between the New Britain Museum of American Art and individual collectors or institutions will be the rule. This was the case with *Masterworks of Shaker Design: A Tale of Two Enfields*.



▶ WALTER WICK: HIDDEN WONDERS!

The largest survey of Wick's work to date, *Walter Wick: Hidden Wonders!* paired beloved images, including over 15 never-before-seen works, with numerous three-dimensional models upon which his photographs are based. Celebrating five decades of creativity, as well as Wick's indelible role in the development of photographic illustration, this exhibition delighted art lovers of every age. We were thrilled to welcome 8,165 visitors to see the exhibition this summer, while offering free admission to children under 18 through the CT Summer at the Museum program.



WHAT VISITORS ARE SAYING ABOUT US

“Love the scavenger hunt for the kids throughout the whole museum! Made them look at all the art!”

“It’s hard to pick one thing, but I really appreciate the increased focus on women and POC, and it was interesting to walk through the *30 Americans* exhibit with my father, who has limited exposure to perspectives different from his own.”

“My favorite part was the landscape comparisons. The natural beauty vs. the abstract and unnatural strange aesthetic of man-made changes to the earth. The inclusion of more women artists and more contemporary women artists especially!”



◀ FROM THE VAULT: POST-WAR TO CONTEMPORARY ART

Spanning the 1940s to the 2000s, *From the Vault* is the largest display of permanent collection masterworks of the Post-War era ever staged at the Museum, and comprises beloved highlights, recent gifts and acquisitions, and numerous works on view for the first time. Presented chronologically, works by leading figures in American art, including Robert Motherwell, Louise Nevelson, Kay Sage, Anni and Josef Albers, Sol LeWitt, Frank Stella, Andy Warhol, Jim Dine, Jaune Quick-to-See Smith, and Titus Kaphar, among others, reflect the incredible evolution of American artistic expression over the last 80 years.

▶ THE BLACK MATRIARCHS SERIES

The Museum's exhibition *The Black Matriarchs Series*, which opened in June, celebrates the legacy of a remarkable community of Black women who worked and lived in New Britain for many years. On public view for the first time in 35 years, this series of pen, ink, and charcoal portraits was commissioned in the late 1970s by historian and educator Jimmie Elizabeth (Timmons) Nkonoki-Ward, from her friend, artist Kenneth A. Larson (1947-1994)—both of whom were long-time New Britain residents. These compelling portraits depict women who were leaders, trailblazers, educators, and nurturers in the community.



DEEPENING COMMUNITY CONNECTIONS

Throughout the year, the NBMAA presented seven Community Days with free admission—two of which were free Thursday evening Art Summer Nights and five that were all-day events. We have continued to deepen our community connections by collaborating with our Community Advisory Committee, engaging our neighbors, and opening our doors to over 1,818 people for Art Summer Nights, Hispanic Heritage Celebration, Halloween Spooktacular, Holiday Celebration, Martin Luther King Jr. Day, and Juneteenth.

New and ongoing partnerships and collaborations with local organizations and artists include:

- **Five Churches:** The NBMAA is partnering with Five Churches Brewing to release seasonal labels for the brewery's New England IPA. The label design will alternate between featuring an artwork from the Museum's collection and an original design by a local artist.
- **Center for Nonviolence:** In commemoration of Dr. King's birthday, the NBMAA partnered with the CT Center for Nonviolence (CTCN) to present an afternoon

of art-making, music, and learning led by CTCN teaching artists and certified nonviolence trainers.

- **CT Poetry Society:** The Connecticut Poetry Society held an Ekphrastic Poetry workshop at the NBMAA for members of The Connecticut Poetry Society. The two-part event was held in March at the Museum. Twenty participants from the Connecticut Poetry Society went through the galleries and chose a work of art for inspiration to create an ekphrastic poem. A video was created that uses still pictures of the selected art with a voiceover of the poet reading the poem it inspired.
- **CT Art Education Association:** The Education department hosted the annual Election Day professional development, the Connecticut Art Educators Association's annual conference.
- **ShopBlackCT:** The NBMAA was proud to have ShopBlackCT sponsor its vendors market at the Juneteenth Celebration. ShopBlackCT is the largest online resource for CT Black-owned businesses.
- **Capital Region Education Council (CREC) Schools:** CREC partnership was formed after a specially designed professional development program on how looking at and making art can bolster social emotional learning and resulted in school visits throughout the academic year.
- **The Rocky Hill Veterans Home:** Rocky Hill Veterans Home came back to the Museum after a long hiatus to experience our Memory Loss tours.



COMMUNITY DAYS BUSINESS & COMMUNITY PARTNERS

Jodi Cup of Health
Amanda Mendoza Art
Blackrose Design
The Greener Gift
Cecilia Imports
High Ridge Pottery
Originals by Cyn
Earth Rhythms Jewelry
Frankie Baez
Rave Rose Gem Infusions
Khonda African Arts
Laurie Lynn's Jewelry
Aspenne's Library
Mutts & Bolts
Red Horse Pottery
Mountain Tree Studios
With Heart By Hand
Pourwhore
Naomi Nevo Ben Ari
Sweet House Creations
Kishalee Unroofed
African Attire
Bamn Books LLC
Shades of We By Shay
Skincare
African Adornments
Jarbath Art
OilBasedts
Oh D'Luxe Candle Company
ShopBlackCT
NAACP New Britain Branch
Foxcraft
RastaRant Experience
Bigalow Catering
Seaside Creamery
Lenaj Collections
Tafika Arts LLC
Designs by Active
DIASPORA Multicultural
Society
Melanin Clo
Creative Cards by Vicki
Miel Coffee
Leather Witch Accessories
Urban Mala
New Britain Public Library

New Britain Fire
Department
New Britain Police
Department
Latasha Cakes
Kendy
Arleen's Ryma
Freedom by Fitness LLC
Bellatrixx Energy
T3 Productions
Prudence Crandall Center
Dr. Violin
Ben Righter
Ysanne & Band
Dance Legacy
Yellie B
Tang Sauce & Band
Alexander Ogbonna
Anthony Figueroa
James D'Amore
Simone & The Score
Zulma Salazar
Posh Paint
Tea & Tarot
Sarah Hanahan
Dripavellis
Kimarley Henry
Cinder + Salt
Corey Pane

FY23 ENGAGEMENT BY THE NUMBERS

22,258

Best program attendance since 2020. Program attendance has increased 43% in FY23.

\$139,556

General admission revenue. We met our FY goal for GA Revenue.



BEST MUSEUM
STORE REVENUE
SINCE 2015



BEST OVER ALL GENERAL
ADMISSION AND
PROGRAM ATTENDANCE
SINCE 2019.

FY23 EDUCATIONAL DIGITAL CONTENT

196,369

Website Users

Social Reach:
1M people

SCHOOL SERVICES AND ADULT PROGRAMS

2,394

participants in adult programs, including lectures, art history classes, gallery talks, and studio classes

1,588

college students and adult groups on guided tours of the Museum

7,065

students on tours, with an additional 1,000 chaperones in attendance from across the state

COMMUNITY AND FAMILY PROGRAMS, OUTREACH, AND DIVERSITY

1,800+

people participated in 7 community programs throughout the year, including Juneteenth

900+

people were engaged through youth outreach, tabling events, and meetings with local organizations

400+

children and families participated in children's classes

2

Onsite student art exhibitions for Berlin and New Britain schools welcomed thousands of students and adults to the Museum.



ORGANIZATION



BOARD OF TRUSTEES

Executive Committee

Dona V. Cassella, Chair
Peter Paul Yu, MD, Vice Chair
Kenneth J. Carifa, Secretary
Kay Knight Clarke, Treasurer
John (Jay) Bombara, At Large
Kenneth Boudreau, At Large
David Jepson, At Large
Gary Knoble, At Large

Trustees

Arnold Amstutz
Marenda Brown-Stitzer
Russell E. Burke III
Gail Byeff
Cynthia Cooper
Jack Corroon
Neal Freuden
Lisa Lazarus
Logan Milliken
Michele Parrotta

Susan Rathgeber
René Rosado
Donna Stout
Nancy Stuart
Claudia Thesing, Ph.D*
Albert Tomasso
Susan Warner, Sc.D
Tania P. Weiss

Honorary Trustees

Mrs. Joan Baekeland
Alyce Fuller
Charles and Irene Hamm
The Honorable Nancy Johnson and Dr. Theodore Johnson

Trustees Emeriti

Samuel Bailey, Jr.
Timothy Bergstrom
Barbara Bradbury-Pape
Peter Byeff

Rhoda L. Chase
William Chase
Dr. Martin Cooper
Brendan T. Conry
Kathryn Cox
Anita Ferrante
Thomas C. Flanigan
Dr. Marie S. Gustin
John N. Howard
R. Alan Hunter
John M. Jezowski
Dr. Richard L. Judd
Coleman B. Levy
Brenda Manning
John S. Manning ♥
Henry R. Martin
Virginia J. McKernan
Dr. Timothy McLaughlin
Dr. M. Stephen Miller
Janet L. Myers
Gloria Oviedo
John J. Patrick Jr.
David Polk

John R. Rathgeber
Hal Rives
Chris Shivery ♥
Thomas Soyster
Todd Stitzer
Melinda Sullivan
Linda Powers Tomasso, Ph.D
Lindsley Wellman
Kathryn West
Linda Cheverton-Wick
Kimberly Zeytoonjian

♥ Passed during FY23

* Currently on Leave of Absence from BOT while serving as Interim Director of Development

FISCAL YEAR 2023 COMMITTEE APPOINTMENTS

As of July 30, 2023

Executive Committee

Trustees
Dona V. Cassella, *Chair*
Peter Paul Yu, MD, *Vice Chair*
Kenneth J. Carifa, *Secretary*
Kay Knight Clarke, *Treasurer*
John (Jay) Bombara, *At Large*
Kenneth Boudreau, *At Large*
David Jepson, *At Large*
Gary Knoble, *At Large*

Staff
Brett Abbott,
Director and CEO

Collections Committee

Trustees
Gary Knoble, *Chair*
John (Jay) Bombara
Russell E. Burke III
Kenneth J. Carifa
Dona V. Cassella, *ex officio*
Kay Knight Clarke
Cynthia Cooper
Lisa Lazarus
Logan Milliken
Michele Parrotta
René Rosado
Donna Stout
Tania Weiss

Trustee Emeriti
Anita Ferrante
Brenda Manning
M. Stephen Miller
Lindsley Wellman
Thomas Soyster

Museum Members
Susan Hight
Paul Kanev

Staff
Brett Abbott,
Director and CEO
Keith Gervase,
Manager of Collections
Lisa Hayes Williams,
Curator & Head of Exhibitions

Development Committee

Trustees
Susan Rathgeber, *Chair*
Gail Byeff
Kenneth J. Carifa
Dona V. Cassella, *ex-officio*
Lisa Lazarus
Donna Stout
Claudia Thesing, Ph.D. ♦
Susan Austin Warner, Sc.D
Tania Weiss

Staff
Brett Abbott,
Director and CEO
Claudia Thesing, *Interim Director of Development* ♦
Amanda Shuman-Bisson,
Associate Director of Development
Jenna Lucas,
Development & Membership Coordinator
Alexis Zimmerman,
Development Associate

Education Committee

Trustees
René Rosado, *Chair*
Dona V. Cassella, *ex-officio*
Marenda Brown-Stitzer
Lisa Lazarus
Nancy Stuart
Susan Austin Warner, Sc.D

Trustee Emeriti
Brenda Manning
David Polk

Museum Members
Carol Benjamin
Kathy Butler ★
Mona Cappuccio
Ruthie Davis
Katherine Dow
Hilary Freedman
Terry Gianzinetti
Carol Lacoss
Lynn Wadhams – LOA for FY23

Staff
Brett Abbott,
Director and CEO
Kathy Butler, *Interim Director of Education* ★
Stephanie Strucaly,
Coordinator of Community Partnerships & Outreach
Jasmine DeJackome,
Manager of School Services and Adult Tour Programs
Sommer Byers, *Museum Educator*

Facilities Committee

Trustees
David Jepson, *Chair*
John (Jay) Bombara
Kenneth Boudreau, *Vice Chair*
Kenneth J. Carifa
Dona V. Cassella, *ex-officio*
Neal Freuden

Emeriti
Anita Ferrante
John N. Howard

Museum Member
Chip Eveleth
Richard Dighello

Staff
Brett Abbott,
Director and CEO
Joanne Humen,
Director of Business Administration
Adam Alvarado, *Manager*

Finance & Audit Committee

Trustees
Kay Knight Clarke, *Chair*
Arnold Amstutz
John (Jay) Bombara
Kenneth Boudreau
Dona V. Cassella, *ex officio*
Jack Corroon
Albert Tomasso
Peter Yu, MD

Trustee Emeriti
John R. Rathgeber

Staff
Brett Abbott,
Director and CEO
Joanne Humen,
Director of Business Administration

Investment Committee

Trustees
Peter Yu, MD, *Chair*
Arnold Amstutz
John (Jay) Bombara
Kenneth Boudreau
Dona V. Cassella, *ex-officio*
Jack Corroon
Kay Knight Clarke
Albert Tomasso

Emeriti
John Jezowski
Brendan Conry
William Chase
John N. Howard
Hal Rives
Todd Stitzer

Museum Member
Beverly Buckner-Baker

Staff
Brett Abbott,
Director and CEO
Joanne Humen,
Director of Business Administration

Low Illustration Committee

Trustees
Lindsley Wellman, *Chair, Emeritus*
Dona V. Cassella, *ex-officio*
Gary Knoble

Emeriti
Thomas Soyster

Museum Members
Scott Bakal
Leslie Cober-Gentry
Cora Lynn Deibler
Vincent DiFate
Leonard Everett Fisher
Rebecca Leveille-Guay
Wendell Minor
Roger Reed
Jack Tom
Eric Velasquez
John Witt
Terri Goldich

Staff
Brett Abbott,
Director and CEO
Keith Gervase,
Manager of Collections
Lisa Hayes Williams, *Curator & Head of Exhibitions*

♦ *Currently serving as Interim Director of Development*
★ *Currently serving as Director of Learning and Engagement*

Nominating Committee

Trustees
Kenneth J. Carifa, *Chair*
Dona Cassella, *ex-officio*
Kay Knight Clark
René Rosado
Peter Yu, MD

Trustee Emeriti
David Polk

Staff
Brett Abbott,
Director and CEO
Amanda Shuman-Bisson,
Associate Director of Development
Claudia Thesing, Ph.D, ♦
Interim Director of Development

Detail of: Elizabeth Gourlay, *T orange* 2, 2018, acrylic on canvas, 40" x 40", Anonymous Gift, 2023. Courtesy of the Artist. 2023.8.3

OUR DEDICATED STAFF

As of July 30, 2023

Management & Administration

Brett Abbott
Director & CEO
Marianne Orzechowski
Executive Assistant to the Director

Cafe

Sarah Nguyen
Café Associate

Curatorial

Lisa Williams,
Curator and Head of Exhibitions

Collections

Keith Gervase,
Collections Manager
Michael Mindera,
Associate Preparator
Erica San Soucie
Associate Registrar

Development

Claudia Thesing, Interim
Director of Development #
Amanda Shuman-Bisson,
Associate Director of Development
Jenna D. Lucas,
Development and Membership Coordinator
Alexis Zimmerman,
Development Associate

Finance

Joanne M. Humen,
Director of Business Administration
Karen Hudkins,
Finance Manager +
Roseanne Horn
Finance Assistant
Temp +
Suzanne Wallach,
Accounting Manager #

Marketing

Lisa Lappe,
Director of Communications and Visitor Experience

Sara Georgas
Graphic Designer
Elizabeth Lamont
Senior Marketing Coordinator

Education

Maura O'Shea,
Director of Education +
Kathleen Butler, Interim
Director of Education #
Sommer Byers
Museum Educator #
Jasmine DeJackome
Manager of School Services and Adult Tour Programs
Nicole Hooks
Adult Education Programs Coordinator
Stephanie Strucaly
Coordinator of Community Partnerships & Outreach
Cindy Truong,
ASF Intern*

Facility & Security

Adam Alvarado
Facilities & Security Manager
Christian Torres,
Facilities & Security Assistant Manager #
Valeria Macedonia Estrada,
Facilities & Security Assistant Manager +
Dominic Julio Escalante-Roque,
Lead Security Guard +
Angela Godoy,
Lead Security Guard
Cory Carlone,
Security
Joshua Hubert
Security #
Robert Nevers Jr.,
Security
Axel Julian Robledo Amill
Security #
Donivin Rodriguez
Security +
William Rodriguez
Security +
Andriy Shuter
Facilities Specialist

Visitor Services

Jeffrey Mainville
Director of Operations +
Colleen Mitchell
Manager of Visitor and Volunteer Services
Leanna Guthrie,
Event & Hospitality Manager #
Daisy Gesualdi,
Visitor Services Shift Leader #
Michaela Gorski
Visitor Services Shift Leader #
Kristine Cropper-Alt
Visitor Services Sales Associate
Samuel Jacob Farrell
Visitor Services Sales Associate
Barbara Hawes
Visitor Services Sales Associate
Daniel John Lemire
Visitor Services Sales Associate +
Chelsea Marti
Visitor Services Technology Lead
Fay Elaine Smolen
Visitor Services Sales Associate +
Rashmi Talpade
Visitor Services Sales Associate
Emily FuXi Worcester
Visitor Services Sales Associate +

Museum Store

Laura Van Dine
Store Manager
Lucinda Armillei
Store Sales Associate
Andrea Easton,
Store Sales Associate #
Jill Marie Jamgochian
Store Sales Associate

Megan Rutledge
Store Sales Associate +
Jennifer Wong,
Store Sales Associate #

Joined during FY 2023 + Left during FY 2023

* We are grateful to the American Savings Foundation for generously providing funding for these internships.

ACQUISITIONS AND LOANS

OUTGOING EXHIBITION LOANS FY 2023

Total works sent on loan: 31 objects, 9 borrowing institutions, 6 states, 8 cities

Denver Art Museum, Denver, CO
February 5, 2023 – May 28, 2023

Elizabeth Nourse, Moorish Prince, 1897, Oil on canvas, 32 x 23 3/4 in., Harriet Russell Stanley Fund and through exchange, 1981.68

Figge Art Museum, Davenport, IA
June 9 – September 12, 2023

Ansel Adams, Monolith, The Face of Half Dome, c. 1927, Silver gelatin print, 11 x 8 in., Collection of Andrea Barton, L.2016.8.1LTL

Ansel Adams, Merced River, Cliffs of Cathedral Rocks, Autumn, 1939, Silver gelatin print, 7 1/8 x 9 in., Collection of Andrea Barton, L.2016.8.2LTL

Ansel Adams, Lower Yosemite Fall, c. 1946, Silver gelatin print, 9 1/2 x 7 1/2 in., Collection of Andrea Barton, L.2016.8.3LTL

Ansel Adams, Trees and Snow, 1933, Silver gelatin print, 11 x 8 5/8 in., Collection of Andrea Barton, L.2016.8.4LTL

Ansel Adams, Branches in Snow, c. 1932, Silver gelatin print, 6 7/8 x 5 1/8 in., Collection of Andrea Barton, L.2016.8.5LTL

Ansel Adams, El Capitan, Sunrise, 1956, Silver gelatin print, 9 1/2 x 7 3/8 in., Collection of Andrea Barton, L.2016.8.6LTL

Ansel Adams, Tenaya Creek, Spring Rain, 1959, Silver gelatin print, 7 1/2 x 9 1/2 in., Collection of Andrea Barton, L.2016.8.7LTL

Ansel Adams, Water and Foam, c. 1960, Silver gelatin print, 7 x 6 5/8 in., Collection of Andrea Barton, L.2016.8.8LTL

Ansel Adams, Winter Storm, 1940, Silver gelatin print, 7 3/8 x 9 in., Collection of Andrea Barton, L.2016.8.9LTL

Ansel Adams, Dogwood Blossoms, 1938, Silver gelatin print, 9 1/4 x 6 3/8 in., Collection of Andrea Barton, L.2016.8.10LTL

Ansel Adams, Grass and Pool, c. 1935, Silver gelatin print, 7 x 9 in., Collection of Andrea Barton, L.2016.8.11LTL

Ansel Adams, Nevada Fall, Rainbow, c. 1947, Silver gelatin print, 9 1/2 x 7 1/8 in., Collection of Andrea Barton, L.2016.8.12LTL

Ansel Adams, Rushing Water, Merced River, c. 1955, Silver gelatin print, 8 x 9 3/4 in., Collection of Andrea Barton, L.2016.8.13LTL

Ansel Adams, Bridalveil Fall, c. 1952, Silver gelatin print, 11 3/16 x 11 5/8 in., Collection of Andrea Barton, L.2016.8.14LTL

Ansel Adams, Trees and Cliffs, 1954, Silver gelatin print, 11 1/8 x 8 in., Collection of Andrea Barton, L.2016.8.15LTL

Ansel Adams, Half Dome, Thunder Cloud, ca. 1956, Silver gelatin print, Collection of Andrea Barton, L.2016.8.16LTL

Hancock Shaker Village, Pittsfield, MA
May 14 – October 31, 2023

Unknown Shaker Artist, Rectangular Carrier, c. 1875, Butternut with ash handle and copper tacks. Clear varnish finish, 7 x 8 x 6 in., Gift of M. Stephen Miller and Miriam R. Miller, 2014.78.1

Unknown Shaker Artist, Rectangular Carrier, c. 1870, Butternut, ash, and copper, 5 x 5 1/2 x 3 5/8 in., Gift of M. Stephen Miller and Miriam R. Miller, 2014.78.4

Unknown Shaker Artist, Sewing Chest, 1830-1840, Butternut, 8 1/4 x 18 1/2 x 13 1/4 in., Gift of M. Stephen Miller and Miriam R. Miller, 2014.78.5

Unknown Shaker Artist, Square Carrier, Butternut, 6 1/2 x 6 1/2 x 6 1/2 in., Gift of M. Stephen Miller and Miriam R. Miller, 2014.78.9

Unknown Shaker Artist, Rectangular Carrier, Butternut, 9 3/4 x 11 1/8 x 8 in., Gift of M. Stephen Miller and Miriam R. Miller, 2014.78.19

Isabella Stewart Gardner Museum, Boston, MA
February 16 – May 21, 2023

Betye Saar, Migration: Africa to America II, 2006, Mixed media assemblage, 11 3/4 x 9 3/4 x 9 1/4 in., Stephen B. Lawrence Fund, 2021.1

Mattatuck Museum, Waterbury, CT
March 5 – April 30, 2023

Yvonne Pene Du Bois, 3rd Avenue Elevated, 1945, Oil on canvas, 19 7/8 x 24 1/4 in., Harriet Russell Stanley Fund, 1948.16

Charles Sheeler, Architectural Cadences, 1954, Color silkscreen, 6 1/8 x 8 5/8 in., William F. Brooks Fund, 1978.01

New Bedford Whaling Museum, New Bedford, MA
June 15 – December 3, 2023

Edward A. Page, Seaweed Harvesting, c. 1890, Oil on canvas, 10 x 14 in., Gift of Charles J. and Irene Hamm, 2016.1.47

Polk Museum of Art at Florida Southern College, Lakeland, FL
November 1, 2022 – May 1, 2023

Guy Pene Du Bois, On the Bridge, 1926, Oil on wood panel (1/4" thick), 21 5/8 x 17 7/8 in., Harriet Russell Stanley Fund, 1944.09

Guy Pene Du Bois, A Group of the Artist's Friends, 1938, Watercolor, 14 1/4 x 11 in., Harriet Russell Stanley Fund, 1953.17

Guy Pene Du Bois, Study of a Gentleman, n.d., Oil on board, 16 x 12 in., Gift of the Alix W. Stanley Estate, 1954.43

Smithsonian American Art Museum, Washington, DC
June 16, 2023 – January 29, 2024

Cauleen Smith Electronic, Light up My Life (For Sandra Bland), 2020, Neon, MDF, paint, faceted hematite and aluminum chain, 48 x 42 in., General Purchase Fund, 2021.3

The National Gallery of Art, Washington, DC
October 2, 2022 – May 22, 2023

John Singer Sargent, Tarragona, c. 1908, Watercolor, gouache and graphite on paper mounted on board, 19 1/2 x 13 7/8 in., Grace Judd Landers Fund, 1944.02



ACQUISITIONS LIST

Frank Stella (b. 1936)

Cantahar from Imaginary Places III, 1998
Lithograph, screenprint, relief etching, engraving, and aquatint on handmade paper
52 1/2 x 52 1/2 in.
Gift of Anita Arcuni Ferrante, 2018.6.5

Alexander Hesler (1832-1895)

Abraham Lincoln, Springfield, Illinois, 1860
Platinum print
35 1/2 x 29 in.
Gift of Kenneth J. Carifa and Mark S. Garavel in honor of our parents, Franklin L. & Lorraine M. Carifa and B. Robert & Phyllis Garavel, 2022.6

Robert S. Duncanson

Landscape, 1870
Oil on canvas
30 x 50 in.
Museum Purchase with funds provided by the Robert C. Vance Foundation, 2022.8

Allan Randall Freelon, Sr. (1895 – 1960)

Campaign Headquarters, 1935
Aquatint
10 x 14 in.
Gift of Joel S. Dryer, 2022.7.1

Allan Randall Freelon, Sr. (1895 – 1960)
Elverson Building, 1928/1930
Aquatint
9 x 6 in.
Gift of Joel S. Dryer, 2022.7.2
20 | NBMAA

Allan Randall Freelon, Sr. (1895 – 1960)
Number One Broad Street, 1933
Aquatint
14 x 10 in.
Gift of Joel S. Dryer, 2022.7.3

Allan Randall Freelon, Sr. (1895 – 1960)
Road Menders, 1935
Aquatint
8 x 10 in.
Gift of Joel S. Dryer, 2022.7.4

Allan Randall Freelon, Sr. (1895 – 1960)
Welding (The Welder), 1930
Etching and aquatint
6 x 9 in.
Gift of Joel S. Dryer, 2022.7.5

Allan Randall Freelon, Sr. (1895 – 1960)
Dockside Worker, 1935
Aquatint
9 x 12 in.
Gift of Joel S. Dryer, 2022.7.6

Ruth Bernhard (1905-2006)

Hips Horizontal, 1975
Vintage gelatin silver print
10 3/4 x 13 3/4 in.
Collection of Timothy P. McLaughlin, MD, 2023.2.1

Dorothea Lange (1895-1965)

Migrant Mother, 1936 (printed 1990s by the LOC)
Gelatin silver print
9 x 7 in.
Collection of Timothy P. McLaughlin, MD, 2023.2.2

Arthur Rothstein (1895-1965)

Girl at Gees Bend, Alabama, 1937 (printed 1990s by the LOC)
Gelatin silver print
7 x 9 in.
Collection of Timothy P. McLaughlin, MD, 2023.2.3

Tom Doyle (1928-2016)

Ballycroy, 1998
Bronze from wood
11x 17 x 21 in.
Gift of Linda Cheverton Wick and Walter Wick, 2023.3.1

Caio Fonseca (b. 1959)

Pietrasana Painting, CO3.23, 2003
Mixed Media on Canvas
28 x 38 in.
Gift of Linda Cheverton Wick and Walter Wick, 2023.3.2

Ed Giobbi (b. 1926)

Portrait of Michela, 1955
Oil on canvas
59 1/2 x 24 in.
Gift of Linda Cheverton Wick and Walter Wick, 2023.3.3

Ed Giobbi (b. 1926)

Untitled #1, 1999
Watercolor
8 1/2 x 8 1/4 in.
Gift of Linda Cheverton Wick and Walter Wick, 2023.3.4

Ed Giobbi (b. 1926)
Untitled #2, 1999
Watercolor
8 1/2 x 8 1/4 in.
Gift of Linda Cheverton Wick and Walter Wick, 2023.3.5

Ed Giobbi (b. 1926)
Untitled #3, 1999
Watercolor
8 1/2 x 8 1/4 in.
Gift of Linda Cheverton Wick and Walter Wick, 2023.3.6

Cleve Gray (1918-2004)

Le Carrousel, Paris, 1952
Crayon on paper
19 x 22 in.
Gift of Linda Cheverton Wick and Walter Wick, 2023.3.7

Zbigniew Grzyb (b. 1943)

Untitled, 2004
Mixed media
60 x 60 in.
Gift of Linda Cheverton Wick and Walter Wick, 2023.3.8

Zbigniew Grzyb (b. 1943)
Untitled, 1996
Mixed media
72 1/2 x 72 1/2 in.
Gift of Linda Cheverton Wick and Walter Wick, 2023.3.9

Irene Hardwick Oliveri (b. 1959)

No small agony, 2006
Ink and collage
12 1/2 x 9 3/8 in.
Gift of Linda Cheverton Wick and Walter Wick, 2023.3.10

Peter Waite (b. 1950)

Untitled, n.d.
Mixed media
81 3/4 x 53 3/4 in.
Gift of Linda Cheverton Wick and Walter Wick, 2023.3.11

Ansel Adams (1902-1984)

Ferns, Valley Floor, Yosemite National Park, 1945, printed later, ca. 1960
Gelatin silver print
9 3/8 x 7 1/4 in.
Gift of John L. Raye and Frances Trzcinski

Stefan Roloff (b. 1955)

Romantic Moment at Nudist Beach, n.d.
Chromogenic print
10 1/4 x 13 1/4 in.
Gift of Douglas and Alice Hyland in honor of Martha and James Alexander, 2023.5

Kenneth Alan Larson (1947-1994)

John Butler Talcott House, circa 1884, November 1975
Print
27 1/2 x 32 1/2 in.
Gift of Kenneth J. Carifa, in honor of Dona V. Cassella, 2023.6

Anna Valdez (b. 1985)

Pheasant, 2003
Oil and acrylic on canvas
60 x 50 in.
Gift of Natasha Dillon and Samantha Dareff in honor of Elizabeth Wells, 2023.7

Elizabeth Gourlay (b.1961)

Achiote 5, 2011
Acrylic on canvas
48 x 50 in.
Anonymous gift, 2023, 2023.8.1

Elizabeth Gourlay (b.1961)
There A, 2021
Colored pencil, tape, paint on paper collage
9 x 6 in.
Anonymous gift, 2023, 2023.8.2

Elizabeth Gourlay (b.1961)
T orange 2, 2018
Acrylic on canvas
40 x 40 in.
Anonymous gift, 2023, 2023.8.3

Dawoud Bey (b. 1953)

Carolyn, 2003
Chromogenic print
30 x 40 in.
Gift of Nancy and Tom O'Neil, 2023.9.1

Richard Misrach (b. 1949)

Hazardous Waste Containment Site, Dow Chemical Corporation, 1998
Chromogenic print
30 x 40 in.
Gift of Nancy and Tom O'Neil, 2023.9.2

Simon Roberts (b. 1974)

Ground Bomb, Winter Blast, Arizona, 2002
Chromogenic print
30 x 30 in.
Gift of Nancy and Tom O'Neil, 2023.9.3

Thomas Kellner (b. 1949)

New York, Brooklyn Bridge, 2003
Chromogenic print
33 x 20 1/2 in.
Gift of Nancy and Tom O'Neil, 2023.9.4

Milton Avery (1885-1965)

Autumn Shade, 1955
Oil crayon on paper
12 x 24 in.
Gift of Jane and Richard Wolf, 2023.10.1

Milton Avery (1885-1965)
Little Harbor, 1953
Oil crayon on paper
15 1/2 x 22 1/2 in.
Gift of Jane and Richard Wolf, 2023.10.2

Helena Hernmarck (b. 1941)

No title (landscape), n.d.
Tapestry
62 x 36 in.
Gift of Jane and Richard Wolf, 2023.10.3

Helena Hernmarck (b. 1941)
Colors Knit 1, n.d.
Tapestry
62 x 37 in.
Gift of Jane and Richard Wolf, 2023.10.4

Duayne Hatchett (1925-2015)

The Kiss, 1972
Steel
40 x 14 x 20 in.
Gift of Jane and Richard Wolf, 2023.10.5

Minoru Niizuma (1930-1998)

Whisper in Mountains, 1976
Marble
28 x 13 x 14 in.
Gift of Jane and Richard Wolf, 2023.10.6

Hideaki Miyamura (b. 1955)

White vase, n.d.
Ceramic
21 x 9 1/2 x 9 1/2 in.
Gift of Jane and Richard Wolf, 2023.10.7

Pictured left to right: Cynthia Carlson, Trustee, Robert C. Vance Foundation; Sharon Martin, and Henry (Hank) Martin, NBMAA Trustee Emeritus, who sadly passed just days after this report went to print.



DEVELOPMENT

111

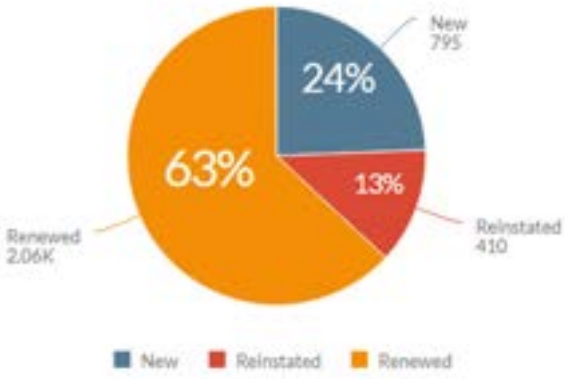
participating Member libraries

700+

new Members during FY23
(vs. 471 in FY22)

3,638

total Memberships



TOP DONORS TO FY 2023

\$100,000+

CT Humanities with funding provided by the Connecticut State Department of Economic and Community Development/Connecticut Office of the Arts from the Connecticut Legislature

\$50,000-99,999

American Savings Foundation
Bruemmer Family Charitable Trust
Community Foundation of Greater New Britain
Department of Economic and Community Development, Office of the Arts
Richard P. Garmany Fund at the Hartford Foundation for Public Giving
Stanley Black & Decker
William Pitt Foundation/
Delamar West Hartford

\$25,000-49,999

Arbella Insurance Foundation
Hartford Steam Boiler Inspection & Insurance Co.
John G. Martin Foundation
Maximilian E. & Marion O. Hoffman Foundation, Inc.

\$15,000-24,999

Dr. and Mrs. Peter D. Bye
Bristle Cone Pine Foundation, Logan Milliken, and Peter Rogers
Connecticut Humanities and the Department of Economic and Community Development, Office of the Arts, which also receives support from the federal ARPA
Connecticut Humanities and the Department of Economic and Community Development, State Historic Preservation Office
Tinty Foundation
Webster Bank

\$10,000-14,999

Acorn Hill Foundation
Aeroflex Foundation
Mr. and Mrs. Kenneth Boudreau
Michael and Dona Cassella
Cheryl Chase and Stuart Bear Family Foundation
The Rhoda and David Chase Family Foundation, Inc.
Mr. and Mrs. Michael Cohen
David T. Langrock Foundation
The O'Neil Family - Baltimore, MD
The Saunders Foundation

SBM Charitable Foundation, Inc.
Mr. Todd Stitzer and Mrs. Marena Brown-Stitzer
Dr. Susan G.A. Warner
Dr. and Mrs. Peter P. Yu

\$5,000-9,999

Mr. Adrian Graham
Dr. Duffield Ashmead and Mr. Eric Ort
Bank of America
Barnes Group, Inc. & Barnes Group Foundation
John and Allison Bombara
Central Connecticut State University
Sandra and Arnold Chase
Clarence B. and Joan F. Coleman Charitable Foundation
Ms. Kay Knight Clarke
Brendan and Carol Conry
Dr. and Mrs. Martin Cooper
Mr. and Mrs. Jack Corroon
Ms. Marie Dudley
Anita Arcuni Ferrante and Anthony Ferrante
Mr. Stephen F. Hard and Mr. Mark Giulietti
Hartford HealthCare
Mrs. Jean H. Holden
Mr. and Mrs. David G. Jepson
Dr. and Mrs. Richard L. Judd
Ms. Lisa Lazarus
Judie and Coleman Levy
Adlyn and Ted Loewenthal

David and Dorothy Lund
Drs. Timothy McLaughlin and Marian Kellner
Susan and John Rathgeber
Mr. Douglas H. Robins
Ms. Madeleine Rudin and Mr. Grant Johnson
SEI Investments
Sorenson-Pearson Family Foundation Inc.
Mr. and Mrs. Thomas Soyster
Claudia Thesing
Dawn Tyler
Ms. Katherine Wadsworth

\$2,500-4,999

Mr. and Mrs. Brett Abbott
Mr. Jeffrey N. Brown
Kenneth J. Carifa and Mark Garavel
Ms. Mary Jane Dunn
Robert and Susan Fisher
Mr. Neal B. Freuden and Ms. Andrea F. Levy
Mr. Thomas Gruber and Ms. Elaine Widmer
Mrs. Elaine M. Hobart
Hospital of Central Connecticut
John Howard and Wendy D. Kirkland
Sam and Polly Huntington
Ion Bank Foundation
John M. and Sandra Jezowski
Dr. and Mrs. Theodore H. Johnson

Mr. Gary W. Knoble and Mr. Robert A. Black**
Dr. and Mrs. Jonathan Kost
Margaret Lawson
Carol LeWitt
Burlington Community Fund at the Main Street Community Foundation
Fuller and Myrtle Barnes Fund for Education the Main Street Community Foundation
M. Stephen and Miriam R. Miller
Marjorie Moore Charitable Foundation, Bank of America, N.A., Trustee
Mrs. Josephine Mucciario
City of New Britain
Charles Parker Trust for Public Music Fund, Bank of America, N.A. Trustee
Ms. Michele Parrotta
The Estate of Dr. Charlotte Ressler**
Skanska USA
The William T. Sloper Trust for Andrew J. Sloper Fund, Bank of America, N.A. Trustee
Melinda and Paul Sullivan
Mr. Albert William Tomasso
University of Hartford
Mr. and Mrs. William Watson
Mr. and Mrs. Steve J. Weiss

\$1,000-2,499

Barnes Group, Inc.
Mrs. Dorien S. Barnett
Phil Brencher
Prof. Richard Buel
Mr. and Mrs. Jeffery Buell
Halsey and Michele Cook
Evan R. Cowles and Brie P. Quinby
Kathryn S.L. Cox
Mrs. Ruth Ann C. Davis
Mr. John E. Dillaway and Ms. Jessica O'Brien
Ms. Christine M. Doty
Downes Construction Company, LLC
Mr. and Mrs. John E. Downes III
Duncaster Retirement Community
Mr. and Mrs. Karl Fleischmann
Sandra Fromson
Mr. Jeremy Garavel
Mr. and Mrs. Paul Garavel

Mr. and Mrs. Joseph Gianni
Mr. and Mrs. Robert B. Goldfarb
Pierre and MaryEllen Guertin
Ms. Sue Hart
Ms. Pamela Hastings
Ms. Margaret Heiner and Mr. Oliver Tostmann
Mr. and Mrs. Gerald L. Hess
Dr. and Mrs. Donald W. Hight
Mr. and Mrs. Michael Humen
Mr. and Mrs. R. Alan Hunter
Dr. and Mrs. Douglas K.S. Hyland
Mr. and Mrs. Jonathan Jarvis
JMZ Charitable Foundation, Inc.
Mr. Theodore Johnson and Ms. Judith Cochrane
Mr. and Mrs. Harvey S. Kelly
Joan Lazar Kemler and Barry J. Kemler
The Donald W. and Dorothy D. Johnson Fund at the Hartford Foundation for Public Giving
Naomi and Joel M. Kleinman
Mrs. Kathleen Krackowsky
Christopher Larsen
Joan Leach
Legrand Wiremold Charitable Contributions Committee
Mr. and Mrs. Michael S. Levine
John** and Brenda Manning
James H. and Melinda L. Martin
Harry and Janice Mazadoorian
Mr. and Mrs. Stephen Milliken
Mr. and Mrs. Mark Monroe
Mr. and Mrs. Robert G. Montstream
Ella Moyer
Elizabeth H. Norton Trust Fund
Mr. Borden Painter, Jr.
Paul and Angela Penney
Mary Margaret Piazza**
Mr. and Mrs. Joseph Pierz
Plainville Community Fund at the Main Street Community Foundation
John and Simone Reynolds
Mrs. Belle Ribicoff
Mr. and Mrs. René Rosado
Dr. Ann Sagalyn and Mr. David Marks
Patricia and Andrew Salner
Mrs. Mary T. Sargent

Mr. and Mrs. Tony Scherer
Ms. Elizabeth A. Schiro and Mr. Stephen Bayer
Mrs. Mary Jane Sobinski-Smith and Mr. William Smith
Alan L. Stern, M.D. and Cyndi Billian Stern
Mr. and Mrs. Keith Stevenson
Ms. Nancy M. Stuart and Mr. David G. Lang
Mr. and Mrs. Richard Tedder
Mr. and Mrs. Townsend Thomas
Mr. and Mrs. James W. Tilney
Ms. Martha G. Trask
Lin Wellman
Mr. Philip Wellman and Ms. Leslie Smith
W. Casey and Kathryn West
Roy Wiseman and Lisa Kugelman
Dr. and Mrs. Thomas J. Zaccheo, M.D.
Zachs Family Foundation, Inc.

\$500-999
Mr. Lans Anderson
Ms. Beth Abbatemarco
Rev. Elizabeth Aurand and David Keating
Mrs. Ellen Babcock
Mr. and Mrs. B. Baiter Household
Mr. Paul Beach
Mr. and Mrs. David Beaulieu
Ms. Carol S. Benjamin
Dr. and Mrs. Arthur T. Blumer
Mr. Jae Brochu and Ms. Melissa Lake
Mr. and Mrs. John W. Canora
Mr. and Mrs. Ronald A. Carubba
Mr. and Mrs. John Chapman
Linda Cheverton-Wick and Walter Wick
Hendricks Churchill
Peter and Marcelyn Clarke
Mr. Leonard Comeau
Mr. Paul Deleeuw and Ms. Jeanne Leibham
Mr. Richard Dlugos
Mr. and Mrs. Benjamin Doolittle
Ms. Jane Emerson and Mr. Jonathan Emerson
Mr. and Mrs. Phil Ferrari
Ms. Ellen C. Fisher
Mr. and Mrs. Jerry Franklin
Mr. William Fuller

Mr. and Mrs. Bob Garthwait, Jr.
Natalie Giana
Mr. and Mrs. Arnold C. Greenberg
Ms. Kathryn Bucher Hanlon
Mr. and Mrs. Raymond Happy
Mrs. Beverly Harris
Laura R. Harris
Drs. R.V. and Patricia Hensley
Mr. and Mrs. Brian Hubbard
The Hudkins Family
Mr. and Mrs. Richard L. Hughes III
Mr. Robert D. Keder
Mr. and Mrs. Paul Kiefer
Janice and David Klein
Mr. and Mrs. Lester Knox
Mr. Bradford Korder
Mr. and Mrs. David A. Kvam
Mr. Richard Lalli
Dr. Leena Langeland
Mr. and Mrs. Travis Lappe
Robert T. Leo, Jr.
Mr. Ed Leshem
Andrew and Lauren Lieberman
Mr. and Mrs. Thomas H. Lorch
Mrs. Dara Mason
Mr. and Mrs. Hunter Mathena
Melanie and Bill McCue
Mr. and Mrs. Lawrence V. Mowell
Multicultural Arts Program
Mr. Robert Murzyn and Mrs. Carol Larco-Murzyn
Randy Parks
Mr. and Mrs. Brewster Perkins
Mr. and Mrs. Alan M. Perrie
Dr. William A. Petit, Jr.
Mr. David T. Price
Nancy A. Ringrose
Harold Rives and Marki Ware
Mr. and Mrs. Thomas Rohback
Mickey Rowland
Mr. Anthony Ruzsala
Ms. Shirley F. Scholder
Mr. and Mrs. Michael J. Scougall
Ms. Michaela Senk-Eustace
Mr. and Mrs. Isadore A. Sindell
Mr. and Mrs. Howard Small
Mr. and Mrs. Stuart Small
Dr. and Mrs. Barry Stein
Mr. John Stephenson and Ms. Deborah Boynton

Mr. and Mrs. Samuel D. Stout
Ms. Maurine Sutter
Mrs. Ashley Szyluk
Thomas Mach Interiors
Lavell Thompson
Mr. Vincent Turley and Ms. Fran Barringer
Mr. and Mrs. Cecil Ursprung
Mr. Andres Verzosa and Mr. David Whaples
Mr. and Mrs. John H.P. Wheat
Susan Williams
Ms. Jane Wright Wolf and Mr. Richard B. Wolf
Ms. Mary M. Wynn
Mr. and Mrs. Arthur Wyszomirski Household
Mr. and Mrs. Jonas Zdanys

\$250-499

Mr. Justus J. Addiss and Ms. Alison L. Johnson
Mr. and Mrs. Raymond S. Andrews, Jr.
Amanda and Scott Aronson
Arts at the Capitol Theater High School
Mr. and Mrs. Roger Astmann
Mr. Ivan A. Backer and Ms. Paula Fisher
Ms. Ruth Batogowski
Mr. and Mrs. Jack A. Bergquist
Laura Boehm
BoneeWeintraub, LLC
Mr. and Mrs. Tom Bradley
Nancy A. Brennan
Mr. and Mrs. Seth Brewer
Ms. Gilda S. Brock
Mr. Jeff Brohinsky and Ms. Nancy J. Matula
Dr. Ronald B. Brown and Rev. Jane H. Rowe
Mr. Joseph Buchek and Dr. Susan Buchek
Ms. Sarah Burns
Ms. Susan Busby
Ms. Mary Busick and Mr. Michael Ungaro
Prof. Kathleen A. Butler
Mr. John F. Byrnes
Mr. and Mrs. David Cappuccio
Ellen Carey
Ms. Cynthia Ann Carlson
Mr. and Mrs. Herbert E. Carlson, Jr.
Ms. Patricia Carrigan
Mr. and Mrs. Anthony R. Carter
C.B. and M.S. Casinghino
Mr. Richard Charnick and Mr.

Richard Mayo
Ms. Carol L. Cheney
Cheshire Public Library
M.R. Cipriano
Heston Clapp
Mr. Gary Cluen and Mrs. Cathy Bysiewicz-Cluen
Ms. Mary J. Cockram and Mr. David A. Corrigan
Mr. and Mrs. Harold L. Colvocoresses
Audrey B. Conrad
Mrs. Kathleen S. Conran
Ms. Anna V. Crawford and Mr. Bill Silva
Mr. Bryan C. Daleas
Donald Davidson
Mr. and Mrs. David Davison
Carol M. De Berry
Mrs. Marjorie W. DeBold and Mr. Michael Arseneault
Mr. and Mrs. Lloyd Dethloff
Mr. and Mrs. Lenny Diamond
Ms. Joanna Dilion and Mr. Mark Goduto
Mr. and Mrs. John Dolan
Ms. Hollis Dorman
Helen Newell Douglas
Ms. Diane A. Dounouk
Mr. and Mrs. Chris Doyle
Ms. Diane Dubreuil and Ms. Ellie Boyd
Ms. Frances Dunn
Elaine Dymczyk
Liz and Paul Egan
David and Kathleen Elmore
Mr. and Mrs. Anthony Enders
Mr. and Mrs. Robert Engling
Robert and Elizabeth Engstrom
Ms. Lauri Every
Mr. and Mrs. Peter Fagan
Dick and Donna Fanelli
Ms. Kathleen Fekete
Mr. and Mrs. Hans Fiedler
Mr. and Mrs. Dan Fine
Bruce and Kris Fletcher
Mr. and Mrs. Robert H. Forrester
Ms. Nanci D. Fox and Mr. Garrison Leykam
Dr. Hilary E. Freedman and Mr. Howard R. Zern
Ms. Doreen Fundiller-Zweig
and Dr. Elliot Zweig
Joseph Garner and Leslie Garner
Mr. and Mrs. Ken Geisler
Dr. and Mrs. Michael G. Genovesi
Ms. Amy Genser and Mr. Geoffrey Genser

Mr. N.W. Gibbons and Ms. Lizz Marascivlo
Ms. Jeanne Giles and Mr. John Seaton
Ms. Jennifer Glick
Mr. Alek Glogowski and Ms. Kim Dorfman
Dr. Jordan Goetz, MD
Lee and Bob Goode
Mr. and Mrs. Timothy J. Grace
Mr. and Mrs. Marc Green
Arthur and Zabelle Krasow Greenblatt
Ms. Debra Guss
Marie S. Gustin
Mr. Myron Gutmann
Mrs. Susan M. Hall
Dr. Alexandra Harris and Ms. Charlene C. Li
Mr. James Hartung and Ms. Patricia Jagoe
Ms. Bette Jane Haskell
Ms. Marie P. Healey
Mr. and Mrs. Richard Healey
Dr. Laurel Hennebury and Ms. Barbara Lederer
Ms. Sarah Hill
Mr. and Mrs. Samuel T. Hinckley
Ms. Janet L. Hoffman
Mr. and Mrs. G. Norman Holland
Mr. and Mrs. Wesley W. Horton
Mr. James Hourihan
Ms. Diana Hughes
Mr. and Mrs. Patrick J. Hughes
Kimball and Dorothy Hunt
Mr. Albert G. Ilg
Mr. and Mrs. James W. Jacobs, Jr.
Ms. Susanne Javorski and Mr. Bruce MacLeod
Mrs. Nancy Jezowski
Sally and Carl Johnson
Dr. Paul Kanev and Ms. Pamela Senatore
Mr. Maurice Kaoud
Mr. Ted Kaplan and Ms. Roberta Woronow
Mr. Todd Kaufman
Mr. Austin King
Ms. Deborah Koltenuk and Mr. Christopher Mellow
Konstantin Family Foundation
Mr. Walter Kosman
Dr. and Mrs. Bernard Kosto
Dr. and Mrs. Kenneth F. Kowalski

Ms. Sylvia Krajewska and Mrs. Jadwiga Krajewski
Mr. and Mrs. Donald H. Kray
Ms. Alyssa Krom and Mr. Jonathan Horton
Marilou and Mike Lang
Tom and Lori Lanson
Richard and Elaine Lau
Law Office of Kevin C. Ferry, LLC
Mr. and Mrs. William A. Lazarek
Dr. Dawn Leger
Mr. Gerald M. Lemega and Ms. Nancy R. Lemega-Watt
Mr. and Mrs. Peter Leombruni
Mr. and Mrs. Mark Lescher
Mrs. Jannine Leshem
Mr. and Mrs. Michael B. Levin
Mr. Matthew Todd Levy
Mr. and Mrs. Dean Levy
Mr. and Mrs. Darryl Lippman
Mr. Jeremy J. Lucas and Ms. Danielle Wiston
Mrs. Sylvia Wilson Lucas
Mrs. Marina Luri-Clark and Mr. Patrick Clark
Ms. Lanette Spranzo
Macaruso and Mrs. Linda L. Klopp
Mr. Thomas Mach
Mr. and Mrs. Theodore Madfis
Mr. and Mrs. Robert J. Mandel
Mr. Michael Marques and Ms. Rebecca Maloney
Mr. and Mrs. Thomas S. Marrior
Ms. Margaret A. Marx
MassMutual
Ms. Lynne C. Mazadoorian
and Mr. John M. Lockhart
Ms. Anne McAloon
Mr. and Mrs. Gerald McAuliffe
Mr. William F. McAvoy and Ms. Nancy Tomaselli
Ms. Rachael McCord
Jean and David McQuillan
Ms. Amy Mesrobian
Ms. Tracy Midgley and Ms. Joncia Lytwynec
Ms. Kathy Mikulski
Ms. Maria Miller and Mr. John Charles Thomas
Mr. and Mrs. Robert. M. Miller
Mr. and Mrs. Chad Millman
Dr. and Mrs. Stanislav Moline
Mr. and Mrs. David W. Moore
Ms. Deborah Moyer
Mrs. Eleanor M. Mullen

Ms. Donna Namnoum and Mr. Robert Namnoum
Ms. Shirley Mae Neu and Mr. Frank L. Haviland
Dr. Brenda A. Nurse, M.D. and Mr. Kenneth A. Hampton
Ms. Katherine Papathanasis
Dr. and Mrs. Michael Passaretti
Mr. Greg Pastor and Ms. Heather Blum-Pastor
Mrs. Christine B. Pearson
Mr. David A. Peck and Ms. Susan E. Leslie
Mr. and Mrs. Jim W. Peckham
Ms. Cathy Pepe
Ms. Louise Perkins and Dr. Jeff Glans
Kristan Pierz
Ms. Patty J. Pittman and Ms. Alexandra Solomon
Mr. and Mrs. Elliott Pollack
Ms. Joan M. Pritchard and Mr. Edward Clark
Mrs. Catherine Probolus
Mr. Theodore Raczka and Ms.Nancy Conaway-Raczka
Ms. Erika Reen
Mr. and Mrs. James M. Reidy, Jr.
Renzulli Academy
Mr. John Michael Reynolds

Mr. and Mrs. Dale A. Richter
Mr. and Mrs. Ian C. Rickard
Mr. and Mrs. David Robinson
Mr. John E. Robinson
Ms. Andrea B. Rogers
Robert and Brenda Roggeveen
Mr. Peter Anthony Rosazza
Ms. Veronica Rose
Mrs. Naomi Rothfield
Dr. Elizabeth N. Rumohr
Ms. Jen Ryan
Mr. and Mrs. Richard Sadler
Paul and Annette Salina
Mr. and Mrs. Sebastian J. Sbalcio
Mr. Brad J. Schide
Mr. and Mrs. George Sebastian-Coleman
Mr. Ted Sewitch and Ms. Nancy Sewitch
Claire E. Shea
Joseph M. Shortall and Sara L. Bernstein
Judith Silver
Mrs. Hope V. Sim
Robin Simmons
Mr. and Mrs. Kenneth W. Simon
Mrs. Susan L. Simonds
Mr. Frank Simpson and Mr. Pierric Senay
Dr. and Mrs. George E. Skarvinko MD

Dr. and Mrs. Bolesh J. Skutnik
Mr. and Mrs. Richard Slater
Clare Brett Smith
Mr. and Mrs. William A. Sonstrom
Ms. Ruth Sovronsky
Mr. and Mrs. William J. Stack, Jr.
Mr. and Mrs. Kent I. Stahl
Ms. Lori Steiner
Mr. and Mrs. James. G. Sutton
Ms. Rebecca Swanson-Bowers and Mr. James E. Bowers
Ms. Kathy Swartzbaugh and Ms. Dina Rubin
Dr. Anna Swinbourne
Ms. Debra L. Szabo
Mr. Andrew Szegedy-Maszak and Ms. Elizabeth Bobrick
Ms. Judy Taddeo
William and Barbara Taylor
Mr. and Mrs. Douglas J. Teed
Ms. Ann E. Thomas and Mr. Michael B. Bonzagni
Mrs. H. Grant Thomas
Mrs. Nancy Tomasso
Mr. Humphrey Tonkin and Ms. Jane Edwards
Halina and Krzysztof Trelski
Mrs. Kelly Trujillo
Becky and Tom Trutter
Lynne A. Ustach, Esq.

Mr. John Valengavich
Ms. Susan Vincent and Mr. Jay Vincent
Mr. Robert T. Vinopal
Lynn and John Wadhams
Dr. Cliff W. Wagner and Ms. Kimberly C. Burris
Mrs. Mary-Jo W. Warren
Mr. and Mrs. Rick Warters
Ms. Linda Webber
Mr. Robert Wechsler
Ms. Patricia C. Wehrli-Zemsta
Ms. Madison West
Mr. W. Cameron West
Mr. and Mrs. Delmer Weston
Mr. John D. Whalen and Ms. Dale A. Whalen
Mr. Richard A. White and Ms. Barbara L. Phillips
Dr. William B. White and Ms. Krista Weaver
Mr. Edward B. Whittemore
Mrs. Gretchen Wiedie
Mr. and Mrs. John Wischenbart
The Wiszniak Family
Ms. Kathanne Wray
Ms. Sabrina Xie and Mr. Ethan Heywood
Mr. and Mrs. Ira W. Yellen
Mrs. Karen Zetoff
Mrs. Pauline Zimmerman

Mrs. Mary T. Sargent
Ms. Shirley F. Scholder
Ms. Michaela Senk-Eustace
Mr. and Mrs. Richard Tedder

\$250-\$499
Mr. Lans Anderson
Amanda and Scott Aronson
Ms. Ruth Batogowski
Nancy A. Brennan
Ms. Gilda S. Brock
Prof. Kathleen A. Butler
Mr. and Mrs. Ronald A. Carubba
Hendricks Churchill
Dr. and Mrs. Martin Cooper
Donald Davidson
Mr. Paul Deleeuw and Ms. Jeanne Leibham
Mr. and Mrs. Lloyd Dethloff
Mr. and Mrs. Chris Doyle
Natalie Giana
Lee and Bob Goode
Arthur and Zabelle Krasow Greenblatt
Mr. Myron Gutmann
Dr. Alexandra Harris and Ms. Charlene C. Li
Ms. Bette Jane Haskell
Ms. Marie P. Healey
Drs. R.V. and Patricia Hensley
Mr. and Mrs. Brian Hubbard
Mr. and Mrs. Richard L. Hughes III
Konstantin Family Foundation
Dr. and Mrs. Bernard Kosto
Dr. Leena Langeland
Robert T. Leo, Jr.
Mr. and Mrs. Mark Lescher
John** and Brenda Manning
Ms. Margaret A. Marx
Mr. and Mrs. David W. Moore
Mr. David A. Peck and Ms. Susan E. Leslie
Mr. and Mrs. Jim W. Peckham
Ms. Cathy Pepe
Dr. William A. Petit, Jr.
Kristan Pierz
Susan and John Rathgeber
Ms. Andrea B. Rogers
Ms. Veronica Rose
Mr. and Mrs. Michael J. Scougall
Joseph M. Shortall and Sara L. Bernstein
Mr. John Stephenson and Ms. Deborah Boynton
Mr. and Mrs. Samuel D. Stout
Ms. Maurine Sutter
Mrs. H. Grant Thomas

Mr. Edward B. Whittemore
Mrs. Gretchen Wiedie
Susan Williams
Mr. Jane Wright Wolf and Mr. Richard B. Wolf
Ms. Mary M. Wynn

\$100-\$249
Mr. Justus J. Addiss and Ms. Alison L. Johnson
Mr. James A. Baldwin and Mr. William C. Baldwin
Ilene and Mike Baron
Ms. Clare F. Bean and Ms. Dana DiPietro
Ms. Robin G. Becker and Mr. Kevin Della Bianca
Mr. Joseph W. Belkin and Ms. Nicolette Wernick
Ms. Adrienne Benjamin
Mr. and Mrs. Antoni Berger
Ms. Linda R. Bernstein
Ms. Karen K. Binney
Ms. Marie Bogdanski and Ms. Barbara V. LaRosa
Jay and Allison Bombara
Robert and Sallie Boody
Mr. and Mrs. James Brodey
Mr. Jeff Brohinsky and Ms. Nancy J. Matula
Ms. Barbara M. Buss
Mr. and Mrs. Frank Byrne
Mr. and Mrs. Stephen Cantor
Mr. and Mrs. David Cappuccio
Mr. and Mrs. Herbert E. Carlson, Jr.
Ms. Carol L. Cheney
M.R. Cipriano
Ms. Harriet Clark
Ms. Margaret J. Coe
Mr. Dennis R. Colgan and Ms. Laurel Daggett
Audrey B. Conrad
Mrs. Kathleen S. Conran
Mr. and Mrs. Roger Coyle
Ms. Anna V. Crawford and Mr. Bill Silva
Dr. H. David Crombie and Mrs. Margaret Bartus
Crombie
Ms. Janet Czepiel
Mrs. Ruth Ann C. Davis
Carol M. De Berry
Dr. Tina de Cruz
Mrs. Marjorie W. DeBold and Mr. Michael Arseneault
Mr. Clinton Deckert
Peter J. Denuzze
Capt. Harold Deschenes
Mr. Craig Diangelo and Mr. Frank Stevens
Mr. Thomas Donahue and Ms. Holly De Young
Ms. Hollis Dorman
Ms. Marie Dudley
Ms. Judy Dworin and Mr. William Lambert
Mr. and Mrs. Ralph G. Eddy
Mr. and Mrs. Jon Eisenhandler
Robert and Elizabeth Engstrom
Ms. Maribeth N. Eugene
Eversource Energy
Anita Faulise
Mr. Fenmore Feigenbaum
Dr. and Mrs. Robert V. Fish
Robert and Susan Fisher
Bruce and Kris Fletcher
Dr. Hilary E. Freedman and Mr. Howard R. Zern
Ms. Eileen G. Fritz
Ms. Rachel Galligan and Mr. Kevin Sweeney
Ms. Katherine Garstka and Ms. Ginny Schwarz
Ms. Jeanne Giles and Mr. John Seaton
Mr. Matthew Ginsberg
Mr. and Mrs. Clinton Gladding
Ms. Jennifer Glick
Mr. and Mrs. Timothy J. Grace
Doris and Ray Guenter
Mrs. Susan M. Hall
Mr. Gilbert K. Hatch, Jr.
Mr. and Mrs. Christopher Heppner
Samuel and Marcia Hinckley
Mrs. Jean H. Holden
Mr. and Mrs. G. Norman Holland
Mr. and Mrs. Richard Holloway
Ms. Lily Holthoff
Mr. and Mrs. Paul A. Hudon
Ms. Diana Hughes
Mr. and Mrs. Michael Humen
Kimball and Dorothy Hunt
Mr. Steve Imrich
Mr. and Mrs. B. Theodore Jacobs
John M. and Sandra Jezowski
Mrs. Nancy Jezowski
Ms. Donna Jones-Searle and Mr. Bill Searle
Mr. and Mrs. Brooks Joslin
Mr. Ted Kaplan and Ms. Roberta Woronow
Ms. Eva Klinger

Mr. Gary W. Knoble and Mr. Robert A. Black**
Mr. Jeff Koerner and Ms. Jo-Anne Leventhal
David and Charlotte Koskoff
Ms. Linda Kuehne
Mr. Stan Kundra
Jeffrey Lahr and Janet L. Valeski
Mr. and Mrs. Travis Lappe
Ms. Joanne Lawson
Mr. Eugene E. Leach and Ms. Kathy Frederick
Mrs. Joan A. Leach
Ms. Sandra Ann Lee
Gerald and Zoe Leibowitz
Ms. Judy A. Lewis
Ms. Claudia Lindsey and Mr. Michael Fotos
Mr. Mark D. Litt and Ms. Kathryn A. Grant
Mr. and Mrs. A. Dwight Lopes
Ms. Margaret R. Lorence
Irene Loretto
Mr. and Mrs. Kenneth MacGregor
Mr. and Mrs. Theodore Madfis
Gregory and Amy Manning
Mr. and Mrs. Richard Markham
Mrs. Renate H. Marshall
Mr. Tom A. Martin and Ms. Susan Spiggle
Ms. Ellen M. Massucci
Mr. David Matulis
Harry and Janice Mazadoorian
Mr. and Mrs. George Mazaitis
Robert A. Mazzoni
Mr. and Mrs. Charles McNair
Mr. and Mrs. Fillmore McPherson
Mr. Stephen W. Mindera, Jr.
David Miner and Stephanie Robiner
Ms. Cynthia Mullins
Ms. Nancy Najarian
Ms. Johanna B. Needham
Mr. and Mrs. Tony Neidlinger
Mr. and Mrs. Don O. Noel
Mr. Sean C. O'Connor and Ms. Maris Fiondella
Ms. Rowena Okie and Mr. Peter Brainard
Mrs. Sibyl A. Pellum
Ms. Carolyn G. Perry
Ms. Patty J. Pittman and Ms. Alexandra Solomon
Ms. Julia Parker Post
Mrs. Sara M. Prentis-Brown

ANNUAL FUND FY 2023

\$5,000-\$9,999
Mr. and Mrs. Kenneth Boudreau
Dr. and Mrs. Peter D. Byeff
Anita Arcuni Ferrante and Anthony Ferrante
Mr. Stephen Hard and Mr. Mark Giulietti
Mr. Douglas H. Robins
Sorenson-Pearson Family Foundation Inc.
Dawn Tyler

\$2,500-\$4,999
Mr. Thomas Gruber and Ms. Elaine Widmer
Mr. and Mrs. William Watson

\$1,000-\$2,499
Mrs. Dorien S. Barnett
Phil Brencher
Prof. Richard Buel
Michael and Dona Cassella

Brendan and Carol Conry
Ms. Mary Jane Dunn
Mr. Neal B. Freuden and Ms. Andrea F. Levy
Mr. Jeremy Garavel
Ms. Sue Hart
Ms. Pamela Hastings
Mr. and Mrs. Gerald L. Hess
John Howard and Wendy D. Kirkland
Mr. and Mrs. R. Alan Hunter
Dr. and Mrs. Douglas K.S. Hyland
Mr. and Mrs. David G. Jepson
JMZ Charitable Foundation, Inc.
Dr. and Mrs. Theodore H. Johnson
Christopher Larsen
Carol LeWitt
Mr. and Mrs. Stephen Milliken
Mr. and Mrs. Robert G. Montstream

Paul and Angela Penney
Mrs. Belle Ribicoff
Dr. Ann Sagalyn and Mr. David Marks
Ms. Elizabeth A. Schiro and Mr. Stephen Bayer
Mr. and Mrs. James W. Tilney
Dr. and Mrs. Thomas J. Zaccheo, M.D.
Zachs Family Foundation, Inc.
\$500-\$999
Rev. Elisabeth Aurand and David Keating
Ms. Carol S. Benjamin
Mr. and Mrs. Jeffrey Buell
Kenneth J. Carifa and Mark Garavel
Peter and Marcelyn Clarke
Evan R. Cowles and Brie P. Quinby
Mr. Richard Dlugos

Ms. Jane Emerson and Mr. Jonathan Emerson
Mr. and Mrs. Phil L. Ferrari
Ms. Ellen C. Fisher
Mr. William Fuller
Mr. and Mrs. Robert B. Goldfarb
Mr. and Mrs. Arnold C. Greenberg
Ms. Kathryn B. Hanlon
Mr. and Mrs. Raymond Happy
Mrs. Beverly Harris
Laura R. Harris
Ms. Margaret Heiner and Mr. Oliver Tostmann
Janice and David Klein
Mr. Richard Lalli
Mr. and Mrs. Hunter Mathena
Mr. Borden Painter, Jr.
Mr. and Mrs. Alan M. Perrie
Nancy A. Ringrose
Mickey Rowland

Mr. and Mrs. James M. Reidy, Jr.
Ms. Barbara J. Ricketts
Ms. Janet L. Robb
Ms. Monica Rockefeller
Mr. and Mrs. Paul K. Rogers III
Mr. Peter Anthony Rosazza
Ms. June C. Roy
Mr. and Mrs. Edward Ruby
Diana and Vincent Rudzinski
Mr. and Mrs. Paul G. Salina
Kathleen McKeown Sauer
Mr. and Mrs. Philip C. Sayres, Jr.
Mr. and Mrs. Sebastian J. Sbalcio
Mr. Lars Schon
Mr. and Mrs. Bernie J. Selig
Mr. Paul H. Serenbetz
Mr. and Mrs. Ronald Sexton
Mr. and Mrs. Jonathon Seymour
Mrs. Claudia Shelton
Charles & Christine** Shivery
Clare Brett Smith
Mr. and Mrs. Robert H. Smith, Jr.
Ms. Elizabeth L. Snow
Duncan Somerville
Mr. Ernest H. Spieler and Ms. Joanne King
Mr. Joseph W. Springman
Mr. and Mrs. William J. Stack, Jr.
Stanley Black & Decker
Ms. Nora B. Stevens
Mr. and Mrs. Orren K. Tench, Jr.
Camilla and Dr. Paul Thompson Charitable Trust
Mr. John L. Thorne
Ms. Mya Tillman and Mr. Robert Sanborn
Mr. and Mrs. David T. Totman
Ms. Martha G. Trask
Mrs. Sally F. Tresselt
Mr. and Mrs. Gerald J. Tullai
Ms. Margo Turrentine
Ms. Peter Van Beckum and Ms. Lucinda Starley
Ms. Susan Vincent and Mr. Jay Vincent
Mr. Robert T. Vinopal
Ms. RuthAnne Visnauskas
P. Abbe Wade
Lynn and John Wadhams
Mr. Philip S. Walker
Mr. and Mrs. Thomas J. Wall
Mr. and Mr. Harry C. Wallengren, Jr.

Mrs. Sylvia E. Webb
Lin Wellman
Mr. and Mrs. Richard A. Wiszniak
Mrs. Frances B. Wolski
Ms. Dianne P. Worrall

\$50-99
Mr. and Mrs. James Alfieri
Mr. and Mrs. Louis G. Amodio, Jr.
Mrs. Lynda K. Anderson
Ms. Catherine Banbury
Ms. Iris Bashkin
Ms. Masako Bellomo
Ms. Celestine L. Bernard
Big Y Community Bag Program
Mr. and Mrs. Winthrop Bissell
Ms. Christina L. Boyson and Ms. Louise B. Pruyne**
Dr. Carl and Mrs. Irene Braren
Mr. and Mrs. G. Geoffrey Bray
Ms. Cynthia A. Brown
Janet and Robert B. Bruner
Ms. Alice Burstein
Elizabeth M. Carlson
Mr. Kent E. Carlson and Ms. Karalyn Carlson
C.B. and M.S. Casinghino
Mr. and Mrs. John T. Clancy
Susan B. Clemow
Mr. and Mrs. Kevin Clyne
Mr. and Mrs. Harold L. Colvocoresses
Mr. and Mrs. Matthew Courtney
Mrs. Jeanette Day
Mrs. Ruth N. Day
Mr. Barry E. Deutsch and Dr. Gail L. Deutsch
Father Kevin G. Donovan
Mr. and Mrs. Ira Dorman
Ms. Diane A. Dounouk
Elaine Dymczyk
Jared and Clare Edwards
Dr. Linda S. Erlanger and Rev. Margret Hofmeister
Mrs. Jean Esselink
Ms. Patricia Mary Fahey
Ms. Patricia Feeley
Mrs. Patricia L. Freedman
Ms. Karen Freilich
Mr. and Mrs. Darrell R. Gagnon
Ms. Shirley Galka and Ms. Susan Fabian
Patrick and Frances Gallagher
Mr. and Mrs. Mark Gantner
Mrs. Annette Gavens

Ms. Peggy Geiger
Ms. Sylvia Gingras-Baker
Mr. and Mrs. Marc Glass
Marie S. Gustin
Mr. Karl F. Haberlandt
Patricia and David Hadlow
Mr. and Mrs. Bruce Hall
The Hartford
Mr. James Hartung and Ms. Patricia Jagoe
Mr. and Mrs. Donald Hasenjager
Ms. Janet Hiller and Mr. John S. Volpini
Tom Hollinger and Kathy Coe
The Hudkins Family
Mr. and Mrs. Patrick J. Hughes
Iowa City Genealogical Society
Ms. Susanne Javorski and Mr. Bruce MacLeod
Mr. and Mrs. Masood Karimian
Mr. Earl Grenville Killeen
Dr. Leslie S. Kish
Dr. Lawrence Klein and Ms. Yunfang Zhang
Mr. Michael Klimas
Mrs. Carol A. Kolp
Ms. Christine Lamb
Ms. Shirley Leong
Ms. Judi A. Levesque
Mr. and Mrs. Michael B. Levin
Mrs. Barbara Lewis
Mr. and Mrs. Paul Lundie
Ms. Carol C. Markman
Mrs. Christine Marotta
Mr. Frank J. Matera
Ms. Lindsay Winifred Mathews
Ms. Maria Maynard
Ms. Anne McAloon
Ms. Mary Ann McCabe
Ms. Elisa McCarthy
Mr. Kenton McCoy
Ms. Elizabeth D.C. Meyer
Mr. Harry E. Meyer
Mr. and Mrs. Robert M. Miller
Mr. and Mrs. Jeffrey Mitchell
Ms. Ann B. Mulcahy
Ms. Margaret Murphy
Mary G. Murphy
Ms. Edith Mwenelupembe
Mr. and Mrs. Lawrence W. Myers
Mr. and Mrs. Geoffrey Naab
Mr. and Mrs. Robert R. Natrass
Mr. and Mrs. Joseph Nazzaro

Mrs. Joan C. Olsen
Ms. Jane Paradise
Mr. and Mrs. Glen Parchmann
Annie Parker
Ms. Ann T. Percival
Ms. Anne Pidano and Mr. Alan Lake
Ms. Christine M. Pina
Lorraine L. Powers
Mr. Steven M. Price and Ms. Priscilla Kerbin-Price
Ms. Deborah Robin and Mr. Jack Horak
Mr. and Mrs. Charles L. Ross
Ms. Anna M Salamone and Ms. Lucia Martin
Ms. Bonnie Santarsiero
Mr. and Mrs. Gerald Schwartz
Mr. and Mrs. Daniel Sharp
Judith Silver
Mr. and Mrs. Craig B. Smith
Dr. and Mrs. Jeffrey Stein M.D.
Mr. David T. Stone
Mr. Mervyn F. Strauss and Ms. June Mandelkern
Lorriane and Larry Stub
Mr. William Taylor
Mr. and Mrs. James Tebo
Mr. and Mrs. John Thomas
Ms. Mary C. Tierney
Terry and Cricket Twichell
Mr. and Mrs. John H. Vanderbilt
Mr. Paul Virostek and Ms. Leslie Virostek
Mr. Richard Voigt
Mr. Mark von Mayrhauser and Ms. Dawn von Mayrhauser
Dr. Linda A. Waldman and Rabbi Howard Sommer
Watertown Library Association
Mrs. June P. Webster
Douglas Welch
Mrs. Nancy T. Whitney
Mr. and Mrs. Michael Wiater
Mr. and Mrs. Philip S. Will
Mrs. Jean Williams
Mr. and Mrs. Jere Wilson
Mr. and Mrs. Nathan D. Woodberry
Mr. Vladislav Household
Ms. Carol Zapadka
Marcia Zapatka

**** Deceased**

RESTRICTED GIFTS & GRANTS

\$100,000+

CT Humanities (CTH), with funding provided by the Connecticut State Department of Economic and Community Development/
Connecticut Office of the Arts from the Connecticut State Legislature

\$25,000-\$99,999

American Savings Foundation
Arbella Insurance Foundation
Community Foundation of Greater New Britain
Department of Economic and Community Development, Office of the Arts
Richard P. Garmany Fund at the Hartford Foundation for Public Giving
Maximilian E. & Marion O. Hoffman Foundation, Inc.
Stanley Black & Decker

\$10,000-\$24,999

The Aeroflex Foundation
Logan Milliken, Peter Rogers, and the Bristle Cone Pine Foundation
Cheryl Chase and Stuart

Bear Family Foundation
Connecticut Humanities and the Department of Economic and Community Development, Office of the Arts, which also receives support from the federal ARPA
Connecticut Humanities and the Department of Economic and Community Development, State Historic Preservation Office
Department of Economic and Community Development, Office of Arts
Irene and Charles J. Hamm
The David T. Langrock Foundation
John G. Martin Foundation
The O’Neil Family – Baltimore, MD
Edward C. & Ann T. Roberts Foundation
The Saunders Foundation
SBM Charitable Foundation
Tinty Foundation

\$5,000-\$9,999

Mark Giulietti and Stephen Hard

\$2,500-\$4,999

Bank of America
Russell and Marian Burke
Sandra and Arnold Chase Family Foundation
Clarence B. and Joan F. Coleman Charitable Foundation
Ion Bank Foundation
Burlington Community Fund at the Main Street Community Foundation
Fuller and Myrtle Barnes Fund for Education the Main Street Community Foundation
Elizabeth H. Norton Trust Fund
Marjorie Moore Charitable Foundation, Bank of America, N.A., Trustee
Mrs. Josephine Mucciario
City of New Britain
Charles Parker Trust for Public Music Fund, Bank of America, N.A. Trustee
The Estate of Dr. Charlotte Ressler**
The William T. Sloper Trust for Andrew J. Sloper Fund, Bank of America, N.A. Trustee
Tania and Steve Weiss

\$250-\$2,499

Jay and Allison Bombara
Dona and Michael Cassella
Duncaster

Neal Freuden
Hospital of Central Connecticut
The Donald W. and Dorothy D. Johnson Fund at the Hartford Foundation for Public Giving
Bradford Korder
Legrand/Wiremold Charitable Contributions Committee
Plainville Community Fund at the Main Street Community Foundation
Elizabeth H. Norton Trust Fund
Susan and John Rathgeber
Nancy Stuart
Claudia I. Thesing
Linda Cheverton-Wick and Walter Wick

Gifts In-Kind

Contract Painting Services
Downes Construction Company
Mrs. Lisa Lappe
Ms. Maura O’Shea
Dr. Anna Swinbourne
Thomas Mach Interiors, Inc.

TRIBUTES

Brett Abbott’s first year accomplishments
Brendan and Carol Conry

Kenneth Carifa
Mr. Jeremy Garavel

Dona Cassella
Dr. Anna Swinbourne

Irving and Berni Effron
Mr. Ted Kaplan and Ms. Roberta Woronow

Mary Ann Harris’ Birthday
Mrs. Carole Mulready

Robert Hiemstra
Ms. Frances Dunn

Sandra Hudson
Iowa City Genealogical Society

June and Ken Kausch
Ms. Carol C. Markman

Carol Lacoss
Mr. Richard Dlugos

Brenda Manning
Ms. Cheryl Ferris

Josephine Mucciario
Ms. Julia Grieco

Elizabeth Nkonoki-Ward
Ms. Anna M. Salamone
Ms. Lucia Martin

Maura O’Shea
Lynn and John Wadhams
The Hudkins Family

Amanda Shuman-Bisson
Donna and Dennis Randall

Barbara F. Taylor
William Taylor

Alexis Zimmerman’s and Amanda Shuman-Bisson’s warm welcome to the CGPCT
Ms. Hollis Dorman

In Memory of

Janis M. Anderson
Mr. Lans Anderson

Lil and J.B. Beach
Dr. Tina De Cruz

Lois Blomstrann
Claudia Thesing

June Bogatz
Mrs. Mary K. Willmott

Glenn Campagna
Ms. Karen Campagna

Carlos Carreras
Mr. and Mrs. Brian Hubbard

Robert M. Fechter
Ms. Gilda S. Brock

Gladys Feigenbaum
Mr. Fenmore Feigenbaum

Michael Formica
Ms. Frances Dunn

Charles Gordens
Ms. Mary M. Wynn

Barbara Hart
Mr. Robert Nadolny

Patricia Hatch
Mr. Gilbert K. Hatch, Jr.

Cherry and Noxon Howard
John Howard and Wendy D. Kirkland

Jack Abraham Huttner
Ms. Sharon Huttner

Charles Kahn
Mr. and Mrs. Darryl Lippman

Fred Kundahl
Mrs. Margaret C. Kundahl

William Lacells
Ms. Arlene Basarab and Mr. Joseph Johnson
Mr. and Mrs. James Bosco
Mr. Edwin Davey
Mr. and Mrs. Lester Knox
Mr. Kyle Lalla
Ms. Christine Lamb
Mr. and Mrs. Steven Mierzejewski
Ms. MaryAnn Nessel
New Britain Quartette Club
Ms. Katherine Palmieri and Mr. Tony Delsanto

Natalie Langner
Mr. and Mrs. Duke Cameron
Sekiko McDonald
Ms. Sally A. Shernow
Ms. Ursula S. Wright

Barbara Louis
NBMAA Docents

John “Jack” Manning
Mr. and Mrs. Steven Argosy
Mrs. Louise P. Belkin
Boys & Girls Club of New Britain
Ms. Harriet Clark
Brendan and Carol Conry
Mr. Thomas C. Flanigan and Mr. Jonathan E. Stone
Mrs. Sandra Grip
The Hudkins Family
Sally and Carl Johnson
Mr. and Mrs. Allen W. Leadbetter
Ms. Maureen Liegeot
David and Dorothy Lund
Gregory and Amy Manning
Ms. Karen Matheson and Mr. Nick Mason
Drs. Tim McLaughlin and Marian Kellner
Mr. and Mrs. Steve Miller
Ms. Barbara Pac
Ms. Amy Preuss and Ms. Katie Visnauskas
Susan and John Rathgeber

Claudia Thesing
Mr. and Mrs. John Thomas
Ms. Louise H. Thorson
Ms. RuthAnne Visnauskas

Thomas Maynard
Mr. and Mrs. Travis Lappe
Ms. Maria Maynard

Diane Blethen Mindera
Mr. Stephen W. Mindera, Jr.

Duncan B. Murdoch
Ms. Sandra Murdoch

Robert E. Olsen
Mrs. Joan C. Olsen

Angela Orsene
Mrs. Ruth Ann C. Davis
Mrs. Margaret Murphy

Ann Painter
Mrs. Dianne P. Worrall

Hugh and Lois Penney
Paul and Angela Penney

Jennifer, Hayley and Michaela Petit
Dr. William A. Petit, Jr.

Mary Margaret Piazza
NBMAA Docents

Ernest and Virginia Pomroy
Mr. and Mrs. Kevin Clyde

Jeannette Schermerhorn
Claudia Thesing

Renzo Rollins Schnipper
Mr. and Mrs. Michael Schnipper

Joan Traverso
Mr. and Mrs. Henry Traverso

Gertrude Twichell
Terry and Cricket Twichell

Janel A. Wilson
LaKesha Risby



NBMAA FUNDS

Perpetual Trusts Held By Others

EXHIBITION Helen P.G and John C. Vibberts, Managed by the Community Foundation of Greater New Britain	GENERAL OPERATIONS Elizabeth M. Wick, Managed by Merrill Lynch	ACQUISITION Charles F. Smith Perpetual Trust, administered by Bank of America
---	---	--

Operating

BUILDING & FURNISHINGS Building & Furnishings Fund	Jean Holden Eminent Visiting Artists Workshop Fund	MARION HUSE COLLECTION Barstow Fund	GENERAL OPERATIONS William And Bette Batchelor Operating Fund
CURATORIAL Chase Family Curator of American Art Fund	Alice Krall Continuing Education Fund	MAINTENANCE/ LANDSCAPING Harold M. and Charlene A. Gray Fund	Jay And Lorraine Bruemmer Memorial Fund
DIRECTOR Hyland Medal Fund	Joseph J. Mucciario, Jr. Fund for Arts Appreciation	Martha and Henry Pelton Fund	Martha Pease Bronson Endowment Fund
EDUCATION Dr. Pauline M. Alt Education Fund	EXHIBITIONS Bailey Family Fund For Special Exhibitions	PLANNED GIVING Leonard G. Clough Planned Giving Fund	Charles And Elizabeth Buchanan Fund
Docent Yellow Bus Fund	Kathryn Cox Endowment Fund For Special Exhibitions	TECHNOLOGY Thesing Technology Fund	Jean And Harold Clarke Memorial Endowment Fund
Education Fund	Howard Fromson Endowment For Emerging Artists		Elizabeth H. And Stanley M. Cooper Fund
Robert Lehman Lecture Fund	Shaker Gallery Fund		Margaret M. Cooper Fund
Catharine M. Rogers Lecture Series Fund	HOLIDAY DECORATING Holiday Decorating Fund		Endowment Fund
Melinda And Paul Sullivan Lecture Series Fund			Henry Sage Goodwin Fund
			Grace Judd Landers Fund
			Helen Talcott Stanley Fund

Acquisition

WILLIAM L. AND BETTE BATCHELOR GALLERY William and Bette Batchelor Acquisitions Fund	ILLUSTRATION Sanford B.D. Low Fund	GENERAL ACQUISITION Alice Osborne Bristol Fund
18TH AND 19TH CENTURY Rita K. Heimann Fund for the Purchase of American Art from the Eighteenth through the Twentieth Century	LIVING ARTISTS Members Purchase Fund	William F. Brooks Fund
	Joseph H. and Janet L. Myers Fund	General Purchase Fund
	John Butler Talcott Fund	Stephen B. Lawrence Fund
	Paul W. Zimmerman Purchase Fund	Edward A. And Mary W. Mag Fund
	WORKS ON PAPER Jane and Victor Darnell Fund	Luda S. Piecka Fund

HERITAGE SOCIETY

The NBMAA’s Heritage Society was established in 2003, during the Museum’s Centennial Year, to honor those generous individuals who have chosen to make a lasting and profound impact on the Museum’s future. By including the NBMAA in their estate plans either through a bequest, charitable gift annuity, trust, promised gift of art or other planned gifts, these dedicated individuals are establishing a tangible legacy that lasts for generations.

AS OF JUNE 30, 2023 Anonymous (11) Michael Antisdale and Mark Melanson Frederick** and Joan Baekeland Diane Baldessari** William and Bette Batchelor**# Barbara Belgrade Elizabeth Berry** June H. Bogatz** Sylvia Bonney** Mitzi Bowman Martha P. Bronson**# Thomas S. Brown** Lorraine and Jay P. Bruemmer**# Deborah B. Burklund** Janice Burrill** David and Mona Cappuccio Kenneth J. Carifa and Mark S. Garavel Mario Cavallo Elizabeth Chamberlain**# Rodman W. Chamberlain** Mary P. Clapp**# Dr. and Mrs. Harold M. Clarke** Jean H. Clarke** Kay Knight Clarke Leonard G. Clough**# Mona Clough**# Barbara L. Cole** Brendan and Carol Conry Francis J. Cook** Cynthia Y. and Martin M. Cooper, MD Priscilla Cunningham	Nancy L. Cutter**# Lewis A. Dalburg** Donald Davidson Ruth de Groff** Nancy Delong** Donna DiMauro Genevieve B. Dobek** Abby L. Doolittle Mary Jane Dunn Dr. Anna Eckersley- Johnson** Garth Edwards** Larry and Carol English James D. Fellows Kathleen Fenaughty Anita Arcuni Ferrante & Anthony Ferrante Karl and Muriel Fleischmann Judith Gaffney James B. Given** Sarah (Sally) Given Concetta P. Granski** Alan “Chip” Green, Jr. David and Laura Grey Ken** and Donna Griffen Rev. Paul J. Halovatch Stephen F. Hard and Mark Giulietti Serena Hatch Rita Heimann** Samuel & Marcia Hinckley Beatrice Hofstadter** Alfred H. Hopkins** Alice E. Hurlburt** David and Sharon Jepson Dr. Paul Kanev Sally King Bradford A. Korder Alice L. Krall**	Dr. and Mrs. Charles N.** Leach George S. Lechner Edgar Lee** Laurinda J. Lee** Dawn Leger Gerald M. Lemega and Nancy R. Lemega-Watt Robert T. Leo, Jr. Emily Leonard Robert Lesser** Billie M. Levy Henry Link Geraldine Lombard Sanford Low, Jr. (Sam) James M. Marinelli Adrienne Marks # Doris D. McCombs** Brian McDonald Kevin P. McNamara and Craig Novak Joan G. Morgan Marie-Suzanne Niedzielska Ann S. Parkhurst The Michele Parrotta Living Trust Allen** and Lois Pease Maurice H. Pease** Hugh and Lois B. Penney**# Deborah Pfeiffenberger** Luda Piecka** John Piskor** Eliot H. Porter** Constance Rachac** Charles Ramsey, Jr.** John and Susan Rathgeber Dr. Charlotte Ressler** Belle Ribicoff Sali Godard Riege**	Margaret S. Rochford** Kathryn L. Rockwell** Norman and Janet Rodrigue Albert Sargis** Jeannette B. Schermerhorn* Dr. and Mrs. Donald Shapiro Susannah Shickman** John** and Caryl Slater Robert Srulowitz and Sharon Straka Todd and Marena Stitzer Carol Stout** Maurine Sutter Lois Tarlow** Amy Tatro** Claudia Thesing Helen Thompson Eleanor Thornton Michael and Linda Tomasso Stanley Traceski** Constance R. Unsworth** Lynne A. Ustach Helen P. Vibberts**# John P. Ward** Elizabeth Webster** Lindsley and Gwen** Wellman John H.P. and Karen C. Wheat Robert W. Wolf, Jr.** Ruth Woodcock** Peter and Patricia Wright Elizabeth G. Yannello Jean P. Young #
--	--	---	--

Charter Member
** Deceased Member



EXHIBITION DONORS

30 Americans was organized by the Rubell Museum.

Support for **30 Americans** was provided by Irene and Charles J. Hamm, Edward C. & Ann T. Roberts Foundation, and Logan Milliken, Peter Rogers, and the Bristle Cone Pine Foundation. Additional exhibition support is made possible by Tania and Steve Weiss. Support for the exhibition's curatorial team is provided by Susan and John Rathgeber, Claudia I. Thesing, and Linda Cheverton-Wick and Walter Wick.

30 Americans programming was made possible by Jay and Allison Bombara, Dona and Michael Cassella, Bradford Korder, Nancy Stuart, Neal Freuden, and John and Brenda Manning. In-kind support provided by Thomas Mach Interiors, Inc.

Edward Burtynsky: Earth Observed was made possible by the Howard Fromson Endowment for Emerging Artists and by the generous support of The O'Neil Family – Baltimore, MD. In-kind support is provided by Thomas Mach Interiors, Inc.

Walter Wick: Hidden Wonders! was made possible by The Saunders Foundation and the Cheryl Chase and Stuart Bear family Foundation. Additional exhibition support generously provided by the Bailey Family Fund for Special Exhibitions, Marian and Russell Burke, and Stanley Black & Decker.

Additional exhibition support provided by the Aeroflex Foundation.

JUNETEENTH SUPPORTERS

FY23 Juneteenth Donors
Arbella Insurance
Foundation
Community Foundation of
Greater New Britain
Hospital of Central
Connecticut
Lisa and Travis Lappe



FY 2023 DEVELOPMENT AND MEMBERSHIP EVENTS



August 14, 2022: *Nor'Easter: The 52nd Annual Juried Members Exhibition* Opening Reception



September 15, 2022: *American Realism Today* Members Opening Reception



September 29, 2022: *30 Americans* Circle Tour



October 22, 2022: *The 20th Annual Art Party of the Year Gala*



November 15, 2022: Member Shopping Day



November 17, 2022: *Edward Burtynsky: Earth Observed* Members Opening Reception



Saturday, November 19, 2022: Sponsor dinner for *Edward Burtynsky: Earth Observed*



February 16, 2023: Gallery Talk with Eleanor Harvey, Senior Curator, Smithsonian American Art Museum for Premier Members



March 9, 2023: *Masterworks of Shaker Design: A Tale of Two Enfields* Premier Member Opening Reception



March 14, 2023: Eli Wilner Gallery Talk for Premier Members



March 30, 2023: *Walter Wick: Hidden Wonders!* Premier Member Reception and Gallery Walkthrough, Members Opening Reception, and Sponsor Dinner



April 29, 2023: Heritage Society Brunch



June 3, 2023: Director's Dinner



June 8, 2023: *The Black Matriarchs Series* Opening Reception for Premier Members and Special Guests

MEMBERS

PREMIER MEMBERSHIP

AS OF JULY 1, 2023

John Butler Talcott Society

Chairman (\$10,000)

Mr. and Mrs. Arnold Amstutz
JP Bruemmer Charitable Trust
Dr. and Mrs. Peter D. Byeff
Michael and Dona Cassella
Cheryl Chase and Stuart Bear
The Rhoda and David Chase Family Foundation, Inc.
Ms. Kay Knight Clarke
Mr. and Mrs. Charles J. Hamm
Dr. and Mrs. Peter P. Yu

Director (\$5,000)

Jay and Allison Bombara
Mr. and Mrs. Kenneth Boudreau
Mr. and Mrs. Russell E. Burke III
Dr. and Mrs. Martin Cooper
Mr. and Mrs. Jack Corroon
Anita Arcuni Ferrante and Anthony Ferrante
Mr. Stephen F. Hard and Mr. Mark Giulietti
Mrs. Jean H. Holden
Mr. and Mrs. David G. Jepson
Dr. and Mrs. Richard L. Judd
Ms. Lisa Lazarus
Adlyn and Ted Loewenthal
David and Dorothy Lund
Drs. Timothy McLaughlin and Marian Kellner
Susan and John Rathgeber
Ms. Madeleine Rudin and Mr. Grant Johnson
Mr. and Mrs. Thomas

Soyster
Mr. Todd Stitzer and Mrs. Marena Brown-Stitzer
Mr. and Mrs. Samuel D. Stout
Claudia Thesing
Dawn Tyler
Dr. Susan G.A. Warner

Leader (\$2,500)

Mr. and Mrs. Brett Abbott
Dr. Duffield Ashmead and Mr. Eric Ort
Kenneth J. Carifa and Mark Garavel
Sandra and Arnold Chase
Brendan and Carol Conry
Ms. Marie Dudley
Robert and Susan Fisher
Mr. Thomas C. Flanigan and Mr. Jonathan E. Stone
Mr. Neal B. Freuden and Ms. Andrea F. Levy
Mrs. Elaine M. Hobart
John Howard and Wendy D. Kirkland
Sam and Polly Huntington
John M. and Sandra Jezowski
Mr. Gary W. Knoble and Mr. Robert Black**
Mrs. Margaret W. Lawson
M. Stephen and Miriam R. Miller
Ms. Michele Parrotta
Melinda and Paul Sullivan
Mr. and Mrs. Steve J. Weiss

American Art Circle (\$1,000)

Halsey and Michele Cook
Kathryn S.L. Cox
Mr. and Mrs. Jack Czertak
Mrs. Ruth Ann C. Davis
Mr. John E. Dillaway and Ms. Jessica O'Brien

Ms. Christine M. Doty
Mr. and Mrs. John E. Downes III
Ms. Mary Jane Dunn
Mr. and Mrs. Karl Fleischmann
Sandra Fromson
Mrs. Kristi Gafford
Mr. and Mrs. Robert B. Goldfarb
Pierre and MaryEllen Guertin
Dr. and Mrs. Donald W. Hight
Mr. and Mrs. Michael Humen
Mr. and Mrs. Jonathan Jarvis
Dr. and Mrs. Theodore H. Johnson
Mr. and Mrs. Harvey S. Kelly
Mrs. Kathleen Krackzowsky
Mrs. Joan A. Leach
Dr. and Mrs. Michael S. Levine
Judie and Coleman Levy
Carol LeWitt
John** and Brenda Manning
James H. and Melinda L. Martin

Harry and Janice Mazadoorian
Logan Milliken and Peter Rogers
Mr. and Mrs. Stephen Milliken
Ella Moyer
Mr. Thomas F. O'Neil III and Ms. Nancy D. O'Neil
Paul and Angela Penney
Mary Margaret Piazza**
Mr. and Mrs. Joseph Pierz
John and Simone Reynolds
Mr. and Mrs. René Rosado
Patricia and Andrew Salner
Mrs. Mary T. Sargent
Mr. and Mrs. Tony Scherer

Alan L. Stern, M.D. and Cyndi Billian Stern
Mr. and Mrs. Keith Stevenson
Ms. Nancy M. Stuart and Mr. David G. Lang
Mr. Albert Tomasso
Ms. Martha G. Trask
Mr. and Mrs. William Watson
Roy Wiseman and Lisa Kugelman
Dr. and Mrs. Thomas J. Zaccheo, M.D.
Henry and Judith Zachs

** Deceased

CONTRIBUTING LEVELS

Collector's Circle (\$500)

Mr. Lans Anderson
Mrs. Ellen Babcock
Mr. and Mrs. B. Baiter
Mr. and Mrs. David Beaulieu
Mr. and Mrs. Jeffery Buell
Mr. and Mrs. John W. Canora
Mr. and Mrs. John Chapman
Linda Cheverton-Wick and Walter Wick
Mrs. Susan Copeland
Ms. Carol Ganick
Mr. and Mrs. Bob Garthwait Jr.
Ms. Margaret Heiner and Mr. Oliver Tostmann
Mr. Robert D. Keder
Naomi and Joel M. Kleinman
Dr. and Mrs. David A. Kvam
Mr. and Mrs. Thomas H. Lorch
Melanie and Bill McCue
Ms. Kathy Mikulski
Mr. Robert Murzyn and Mrs. Carol Larco-Murzyn
Mr. Andrew Obelnicki and Ms. Kathleen Kelliher
Mr. Borden Painter Jr.
Hal Rives and Margaret Ware
Mr. and Mrs. Stuart Small
Mr. Vincent Turley and Ms. Fran Barringer
Mr. and Mrs. Cecil Ursprung
Lynne A. Ustach, Esq.
Mr. Andres Verzosa and Mr. David Whaples
Lin Wellman
Mr. Philip Wellman and Ms. Leslie Smith
Ms. Jane Wright Wolf and Mr. Richard B. Wolf
Mr. and Mrs. Arthur Wyszomirski
Mr. and Mrs. Jonas Zdanys

Artist's Circle (\$250)

Mr. and Mrs. Len Albert
Mr. and Mrs. Raymond S. Andrews Jr.
Mr. Richard D. Angotta
Mr. and Mrs. Roger Astmann
Mr. Ivan A. Backer and Ms. Paula Fisher
Mr. and Mrs. Paul Baylock
Ms. Clare F. Bean and Mr. Dana DiPietro

Mr. and Mrs. Jack A. Bergquist
Dr. and Mrs. Arthur T. Blumer
Laura Boehm
Mr. and Mrs. Mark J. Bonney
Mr. and Mrs. Tom Bradley
Phil Brencher
Mr. and Mrs. Seth Brewer
Mr. Jae Brochu and Ms. Melissa Lake
Dr. Ronald B. Brown and Rev. Jane H. Rowe
Mr. Joseph Buchek and Dr. Susan Buchek
Ms. Kimberly C. Burris and Dr. Cliff W. Wagner
Ms. Susan Busby
Mr. John F. Byrnes
Ellen Carey
Ms. Cynthia A. Carlson
Ms. Patricia Carrigan
Mr. and Mrs. Anthony R. Carter
Mr. and Mrs. Ronald A. Carubba
C.B. and M.S. Casinghino
Mrs. Lynn F. Cavo
Ms. Janine Chapdelaine
Mr. Richard Charnick and Mr. Richard Mayo
Ms. Carol L. Cheney
Hendricks Churchill
Dr. Michael R. Cipriano and Ms. Kathleen Surprenant
Heston Clapp
Dr. Jessica Clement
Mr. Gary Cluen and Mrs. Cathy Bysiewicz-Cluen
Ms. Mary J. Cockram and Mr. David A. Corrigan
Mr. and Mrs. Harold L. Colvocoresses
Mr. Len Comeau
Audrey B. Conrad
Mrs. Kathleen S. Conran
Mr. Bryan C. Daleas
Mr. and Mrs. David Davison
Mr. Paul Deleeuw and Ms. Jeanne Leibham
Mr. and Mrs. Lenny Diamond
Ms. Joanna Dilion and Mr. Mark Goduto
Mr. and Mrs. Benjamin Doolittle
Helen Newell Douglas
Ms. Diane A. Dounouk
Elaine Dymczyk

Liz and Paul Egan
David and Kathleen Elmore
Mr. and Mrs. Anthony Enders
Mr. and Mrs. Robert Engling
Mr. and Mrs. Peter Fagan
Dick and Donna Fanelli
Ms. Diane Farr
Ms. Kathleen Fekete
Mr. and Mrs. Dan Fine
Mr. and Mrs. Robert H. Forrester
Ms. Nanci D. Fox and Mr. Garrison Leykam
Dr. Hilary E. Freedman and Mr. Howard R. Zern
Ms. Doreen Fundiller-Zweig and Dr. Elliot Zweig
Joseph Garner and Leslie Garner
Mr. and Mrs. Ken Geisler
Natalie Giana
Mr. N. W. Gibbons and Ms. Lizz Marascivlo
Ms. Jennifer Glick
Dr. Jordan Goetz MD
Mr. and Mrs. Joseph Goldberg
Mr. Joseph Grabarz and Mr. Ronek Patel
Mr. and Mrs. Timothy J. Grace
Mr. and Mrs. Marc Green
Mr. Thomas Gruber and Ms. Elaine Widmer
Marie S. Gustin
Laura R. Harris
Mr. James Hartung and Ms. Patricia Jagoe
Mr. and Mrs. Richard Healey
Dr. Laurel Hennebury and Ms. Barbara Lederer
Drs. R.V. and Patricia Hensley
Mr. and Mrs. Gerald L. Hess
Mr. and Mrs. Richard Hoff
Ms. Janet L. Hoffman
Mr. and Mrs. G. Norman Holland
Mr. and Mrs. Thomas Holt
Mr. and Mrs. Wesley W. Horton
Mr. James Hourihan
Mr. and Mrs. Brian Hubbard
Mr. and Mrs. Richard L. Hughes III
Mr. and Mrs. R. Alan Hunter
Mr. Albert G. Ilg
Mr. and Mrs. James W.

Jacobs Jr.
Mrs. Nancy Jezowski
Sally and Carl Johnson
Ms. Donna Jones-Searle and Mr. Bill Searle
Mr. Ted Kaplan and Ms. Roberta Woronow
Joan Lazar Kemler & Barry J. Kemler
Mr. Austin King
Janice and David Klein
Ms. Rose Kochanowsky
Ms. Deborah Koltenuk and Mr. Christopher Merrow
Mr. Walter Kosman
Irene and Ken Kowalski
Ms. and Mrs. Sylvia Krajewska
Mr. and Mrs. Donald H. Kray
Ms. Alyssa Krom and Mr. Jonathan Horton
Marilou and Mike Lang
Tom and Lori Lanson
Mr. and Mrs. Travis Lappe
Richard and Elaine Lau
Mr. and Mrs. William A. Lazarek
Dr. Dawn Leger
Mr. Gerald M. Lemega and Ms. Nancy R. Lemega-Watt
Robert T. Leo, Jr.
Ms. Shirley Leong
Mr. and Mrs. Mark Lescher
Mr. and Mrs. Michael B. Levin
Andrew and Lauren Lieberman
Mr. Jeremy J. Lucas and Ms. Danielle Wiston
Mrs. Sylvia Wilson Lucas
Ms. Lanette Spranzo
Macaruso and Mrs. Linda L. Klopp
Mr. Thomas Mach
Mr. and Mrs. Robert J. Mandel
Mr. and Mrs. Guy Marhewka
Mr. Michael Marques and Ms. Rebecca Maloney
Mr. and Mrs. Thomas S. Marrior
Mr. and Mrs. Hunter Mathena
Ms. Lynne C. Mazadoorian and Mr. John M. Lockhart
Ms. Anne McAloon
Dr. and Mrs. Gerald McAuliffe
Mr. William F. McAvoy and

Ms. Nancy Tomaselli
Ms. Elisa McClear
Mr. Brian McClear
Jean and David McQuillan
Ms. Tracy Midgley and Ms. Joncia
Lytwynec
Mr. and Mrs. Robert M. Miller
Dr. and Mrs. Stanislav Moline
Mrs. Deborah Moyer
Mrs. Eleanor M. Mullen
Ms. Shirley Mae Neu and Mr. Frank L.
Haviland
Dr. Brenda A. Nurse MD and Mr.
Kenneth A. Hampton
Ms. Katherine Papathanasis
Dr. and Mrs. Michael Passaretti
Mr. Greg Pastor and Ms. Heather Blum-
Pastor
Mrs. Christine B. Pearson
Ms. Louise Perkins and Dr. Jeff Glans
Dr. William A. Petit Jr.
Ms. Patty J. Pittman and Ms. Alexandra
Solomon
Mr. and Mrs. Elliott Pollack
Mrs. Catherine Probolus
Mr. Theodore Raczka and Ms. Nancy
Conaway-Raczka
Ms. Erika Reen
Mr. and Mrs. James M. Reidy, Jr.
Mr. John Michael Reynolds
Mr. and Mrs. Dale A. Richter
Mr. and Mrs. Ian C. Rickard
Mr. and Mrs. David Robinson
Mr. John E. Robinson
Robert and Brenda Roggeveen
Mrs. Naomi Rothfield
Dr. Elizabeth N. Rumohr
Ms. Jen Ryan
Mr. and Mrs. Richard Sadler
Paul and Annette Salina
Ms. Eleanor Saulys and Mr. Don
Trowbridge
Mr. Brad J. Schide
Mr. and Mrs. George Sebastian-Coleman
Mr. Ted Sewitch and Ms. Nancy Sewitch
Claire E. Shea
Judith Silver
Mrs. Hope V. Sim
Robin Simmons
Mr. and Mrs. Kenneth W. Simon
Mrs. Susan L. Simonds
Dr. and Mrs. George E. Skarvinko MD
Mr. and Mrs. Richard Slater
Mrs. Mary Jane Sobinski-Smith and Mr.
William Smith
Mr. and Mrs. William A. Sonstrom
Mr. John Stephenson and Ms. Deborah
Boynton
Ms. Maurine Sutter
Mr. and Mrs. James G. Sutton
Ms. Rebecca Swanson-Bowers and Mr.

James E. Bowers
Ms. Kathy Swartzbaugh and Ms. Dina
Rubin
Ms. Debra L. Szabo
Mr. Andrew Szegedy-Maszak
William and Barbara Taylor
Mr. Jeffrey Tedesco
Douglas and Nancy Teed
Ms. Ann E. Thomas and Mr. Michael B.
Bonzagni
Mrs. Nancy Tomasso
Mr. Humphrey Tonkin and Ms. Jane
Edwards
Mrs. Kelly Trujillo
Becky and Tom Trutter
Mr. John Valengavich
Mr. and Mrs. Marc van Vooren
Lynn and John Wadhams
Ms. Katherine Wadsworth
Mrs. Mary-Jo W. Warren
Mr. and Mrs. Rick Warters
Ms. Linda Webber
Ms. Patricia C. Wehrli-Zemsta
Mr. and Mrs. Delmer Weston
Mr. John D. Whalen and Ms. Dale A.
Whalen
Mr. Richard A. White and Ms. Barbara
L. Phillips
Dr. William B. White and Ms. Krista
Weaver
Susan Williams
Mr. and Mrs. John Wischenbart
The Wiszniak
Ms. Mary M. Wynn
Ms. Sabrina Xie and Mr. Ethan Heywood
Mr. and Mrs. Ira W. Yellen
Mrs. Pauline Zimmerman

Ms. Jane Wright Wolf and Mr. Richard
B. Wolf
Ms. Roberta Woronow and Mr. Ted
Kaplan
Ms. Mary M. Wynn
Mrs. Pauline Zimmerman
Dr. Elliot Zweig and Ms. Doreen
Fundiller-Zweig

**** Deceased**

CORPORATE/ INSTITUTIONAL MEMBERS

BoneeWeintraub, LLC
Central Connecticut State University
Delamar West Hartford
Hartford Steam Boiler Inspection &
Insurance Co.
Law Office of Kevin C. Ferry, LLC
Stanley Black & Decker
University of Hartford

THE 20TH ANNUAL ART PARTY OF THE YEAR GALA

Saturday, October 22, 2022

Nearly 200 guests convened on Saturday, October 22, 2022 for an evening to celebrate the New Britain Museum of American Art. The Event Committee, led by Event Chair Suzanne Jill Levy, planned a festive affair with new ways to participate: a lively cocktail party and an elegant seated dinner among the masterpieces. Guests contributed to the Museum through a silent auction of special experiences and the crowd-favorite Mini Masterpieces. We recognized Marenda Brown Stitzer and Todd Stitzer for their dedicated support of the Museum and organizations throughout New Britain. Thank you to the Committee, volunteers, sponsors, artists and donors, and attendees who made this event a success.

EVENT CHAIR

Suzanne Jill Levy

EVENT COMMITTEE

Gail Byeff
Cynthia Cooper
Marie Dudley
Heather Fronczek
Jan Hasenjager
Susan Rathgeber
Holly Sena
Donna Stout
Albert Tomasso

EVENT HONOREES

Marenda Brown-Stitzer and Todd Stitzer

EVENT SPONSORS DIAMOND SPONSORS

Hartford Steam Boiler Inspection & Insurance
Company
Stanley Black & Decker
Webster Bank

GOLD SPONSOR

The Chase Family Foundations

SILVER SPONSORS

Barnes Group Inc.
SEI Investments Company

BRONZE SPONSOR

Hartford HealthCare and the Hospital of
Central Connecticut

COPPER SPONSORS

Downes Construction Company
Skansa

PATRON TABLE HOSTS

Dona V. and Michael Cassella
Dr. and Mrs. Peter Byeff
Mr. and Mrs. Coleman Levy
Mr. and Mrs. John Rathgeber
Marenda Brown-Stitzer and
Todd Stitzer*
Mr. and Mrs. Samuel Stout
Albert Tomasso
Susan Warner*
Mr. and Mrs. Steve Weiss
Dr. and Mrs. Peter Yu*

PATRON TICKETS

Duff Ashmead and Eric Ort
Jay and Allison Bombara
Kenneth and Judith Boudreau
Michael and Dona V. Cassella
Cynthia and Martin Cooper
Anita and Anthony Ferrante
John Howard and Wendy Kirkland
Mrs. Jean Hanna Holden
Dave and Sharon Jepson
Sylvia and Harvey Kelly
Bradford Korder
Coleman and Judie Levy
Dean and Suzanne Levy
Townsend and Meredith Thomas
Claudia Thesing
Susan Warner
Lindsley Wellman
Philip Wellman

DONORS TO THE ART PARTY OF THE YEAR:

Ray Andrews
Kay Knight Clarke
Beverly and Lawrence Feinberg
Marsha and Barry Goldstein
James and Melinda Martin
Mowell (in honor of Donna Stout and Susan
Rathgeber)
Mary Margaret Piazza, Ph.D.
Ruth and Howard Sovronsky (in honor of
Suzanne Levy)
Nancy M. Stuart
W. Casey and Kathryn West
John H.P. and Karen Cronin Wheat (in honor
of Dr. Peter Yu and Grace Yu)

AUCTION DONORS

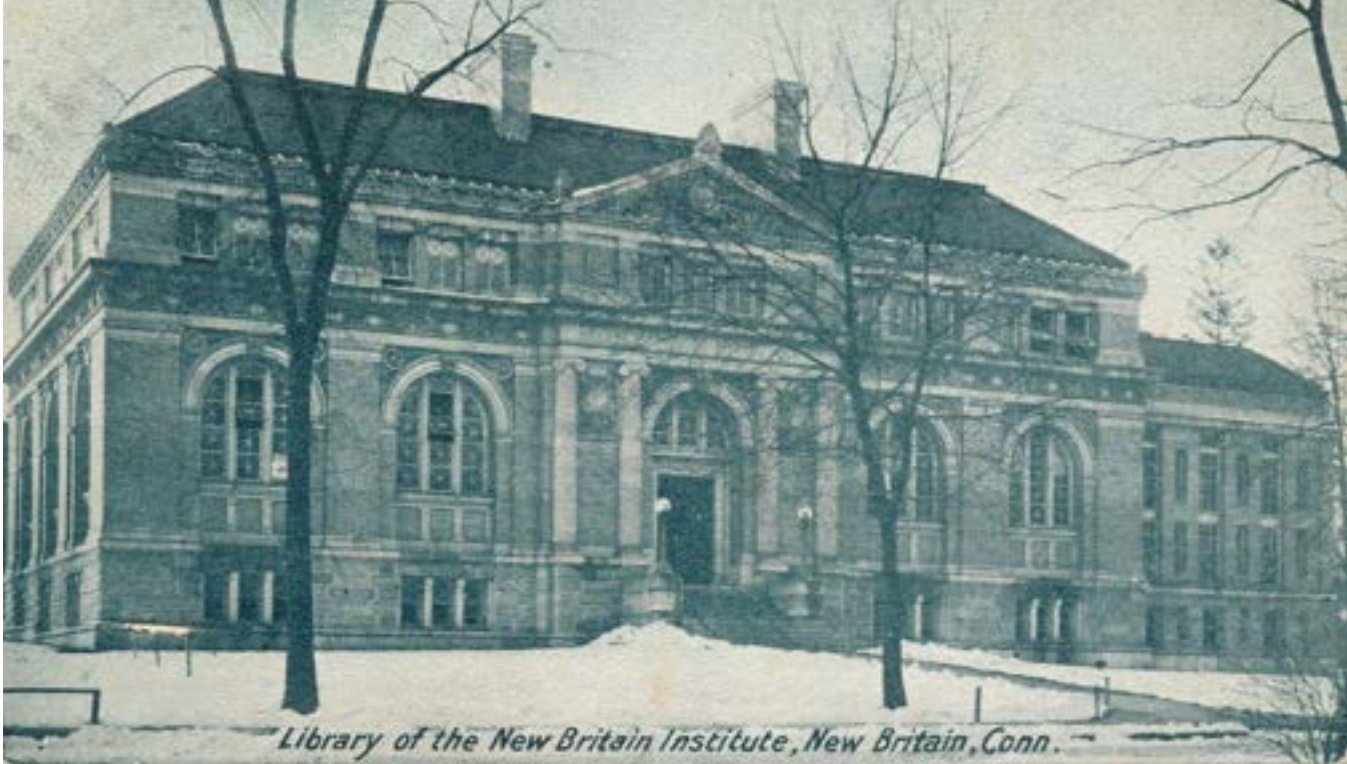
Cooper Family
Doro Catering & Events
Hartford Symphony Orchestra
Hill-Stead Museum
Josh Kim
Carol LeWitt
Eva LeWitt
Mickey Toro
Albert Tomasso
Wadsworth Atheneum

MINI MASTERPIECE DONORS

Barbara J. Alex
Axel J. Robledo Amill
Sarah Baillargeon
Paul Baylock
Susan E. Bender

Matthew Best
Kathleen H. Borkowski
Kathleen Brooks
Margot Callahan
Catherine Christiano
Cynthia Cooper
Patricia Louise Corbett
Carol de Berry
Clinton A. Deckert
Peggy Dembicer
Catherine Doocy
Claire Fish
Angela Godoy
Zbigniew Grzyb
Lois House
John Hsu
Renee S. Hughes
Karen Israel
Misha
JUSTICE
Jennifer Knaus
Carol Lavoie
Marny Lawton
Roxann Poppe Leibenhaut
Daniel J. Lemire
Janet Leombruni
Deborah Leonard
I.S. Levitz
Suzanne Jill Levy
Barbara Maiser
Brenda Manning
William McCarthy
Joan McPherson
Jean McQuillan
Melissa Meredith
Shirley Mae Neu
Paul Ott
Stephanie Rogers
Shawna Rosol
Ruth Sack
Gil Scullion
Phyllis Small
Michael Sundra
Pierre Sylvain
Christian Torres
MG Trask
Anna Webersen
Sandy Welch
NC Whitcher
FuXi Worcester

*Patron Table



LIBRARY PASS MEMBERS

Acton Public Library	East Granby Public Library	Meriden Public Library	Subase New London MWR
Ansonia Public Library	East Haddam Free Public Library	Middlebury Public Library	Library
Avon Free Public Library, Inc.	East Hampton Public Library	Milford Public Library	Terryville Public Library
Babcock Library	East Hartford Public Library	Minor Memorial Library	The Licia & Mason Beekley Community Library
Bakerville Library	East Lyme Public Library	Monson Free Library	Thomaston Public Library
Beacon Falls Public Library	Edward Smith Library	Morris Public Library	Tolland Public Library
Beardsley and Memorial Library	Enfield Public Library	New Britain Public Library	Torrington Library
Bentley Memorial Library	Essex Library Association	New Fairfield Free Public Library	Tunxis Community College
Berlin-Peck Memorial Library	Fairfield Public Library	New Milford Public Library	Wallingford Public Library
Bethel Public Library	Farmington Library	Norfolk Library	Watertown Library Association
Bloomfield Public Library	Forbes Library	North Haven Memorial Library	Welles-Turner Memorial Library
Booth & Dimock Library	Goshen Public Library	Plainville Adult and Continuing Education	West Hartford Public Library
Brainerd Memorial Library	Granby Public Library	Plainville Public Library	Westbrook Public Library
Bristol Public Library	Guilford Free Library	Plumb Memorial Library	Westport Library
Brookfield Library	Gunn Memorial Library	Portland Public Library	Wethersfield Public Library
Burlington Public Library	Hall Memorial Library	Prospect Public Library	Willimantic Public Library
Burnham Library	Hamden Public Library	Rathbun Memorial Library	Willington Public Library
Canton Public Library	Hartford Public Library	Richmond Memorial Library	Willoughby Wallace Memorial Library
Case Memorial Library	Harwinton Public Library	Rockville Public Library	Windsor Public Library
Cheshire Public Library	Henry Carter Hull Library	Russell Library	Wolcott Public Library
Chester Public Library	Howard Whittemore Library	Salem Free Public Library	Woodbridge Town Library
Clark Memorial Library	James Blackstone Memorial Library	Saxton B. Little Free Library	Woodbury Public Library
Cora J. Belden Library	Jonathan Trumbull Library	Scoville Memorial Library	
Cragin Memorial Library	Kent Memorial Library	Sherman Library	
Cromwell Belden Public Library	Killingworth Library Association, Inc.	Silas Bronson Library	
Danbury Library	Levi E. Coe Library	Simsbury Public Library	
Deep River Public Library	Lucy Robbins Welles Library	Somers Public Library	
Douglas Library	Lyme Public Library	South Windsor Public Library	
Durham Public Library	Manchester Public Library	Southbury Public Library	
E.C. Scranton Memorial Library	Mansfield Public Library	Southington Library and Museum	

VOLUNTEERS

Amanda Aronson	Natalie Giana	Abby Lupacchino	Suzanne Roy
Sandy Baclaski	Terry Gianzinetti	Kathleen Lyons	Claudia Ryan
Bonnie Beaulieu	Janey Giel	Greg Maglio	Karen Schick
Marie Bogdanski	Mark Giulietti	Brenda Manning	Brad Schide
Irene Braren	Maxine Gleason	Marsha Mason	Allan Schiffer
Kathy Butler	Stephen Hard	Sekiko McDonald	Joyce Schroeder
Rosemary Campbell	Melissa Haseley	Nicky McGuire	Roberta Shea
Mary Cannella	Jan Hasenjager	Barbara Mendelson	Ellen Sheehan
Mona Cappuccio	Catherine Heinz	Steve Miller	Judy Silver
Maggie Carlin	Frances Henninger	Abigail Mitchell	Pam Simon
Marie Carlson	David Hickox	Jeffrey Mitchell	Susan Simonds
Anne Carubba	Elaine Hobart	Josephine Moreno	Susan Skarvinko
Dona Cassella	John Jevitts	Erica Muniz	Susan Smayda
Diane Catenzaro	Sally Johnson	Nancy Najarian	Barbara Smith
Sandy Chase	Angela Kane	Joani Olsen-Kenney	Pamela Sorenson
Carol Courtney	Rick Kearney	Angela Orsene	Frank Steele
Diana Creamer	Alma Kearns	Sally Oxman	Jonathan Stolzenberg
Ruth Ann Davis	Gretchen Kelly	Donna Ozga	Rhea Sutter
JoAnn DeWind	Joan Kennedy	Susan Palms	Ruth Swisher
Mary Jane Dunn	Marie Koller	Kathryn Papadakis	Judy Taddeo
Gay Fialko	Carol Lacoss	Ann Parkhurst	Dianne Therrien
Ellen Fisher	Jeanne Larose	Chris Pentore	Anna Tufankjian
Barbara Fletcher	Barb Laurain	Lana Pentore	Dianne Veale
Sally Follansbee	Lorraine Legnani	Bob Pezze	Kathy Wadsworth
Lynn Folis	Bob Leo	Nancy Piccione	Susan Walkama
Hilary Freedman	Andrea Levy	Nancy Pilarski	Liz Wells
Susan Gagnon	Barbara Lewis	Dori Reidy	Mary Wilde
Marissa Gallucci	Susan Livingston	Albina Romanski	Rosemary Winady
Clare Gatta	Pamela Lockard	Izabella Rosa	Roberta Woronow
Evelyn Genovese	Geraldine Lombard	Valerie Rosa	Mary Ziomek
Vicki Gessman	Katherine Lotko	Bob Rosenfeld	

TOURING DOCENTS

Ron Abbe	Jan Hasenjager	Margaret Milch	Judy Silver
Carol Benjamin	Clare Gatta	Luc Ouellette	Susan Simonds
Margaret Bercovitz	Terry Gianzenetti	Sally Oxman	Susan Smayda
Joanna Biskupski	Maxine Gleason	Donna Ozga	Pamela Sorensen
Irene Braren	Elaine Hobart	Kathryn Papadakis	Judy Taddeo
Kathy Butler	Angela Kane	Mary Piazza	Mary Talbot
Mona Cappuccio	Gretchen Kelley	Beverly Pierz	Diane Therrien
Marie Carlson	Joan Kennedy	Carol Raza	Anna Tufankjian
Diana Creamer	Carol Lacoss	Dori Reidy	Dianne Veale
Mary Jane Dunn	Andrea Levy	Suzanne Roy	Kathy Wadsworth
Eileen Fisher	Pam Lockard	Karen Schick	Lynn Wadhamsm
Hilary Freedman	Barbara Mendelson	Katharine Shaskus	Liz Wells
Jackie Fastaia	Les Milch	Anne Sheffield	Roberta Woronow

FINANCES

The Museum experienced a year of financial growth in earned revenue with a steady increase in program attendance, Memberships, and admissions. Overall, we ended the year with a decrease in net assets of \$1,383K. Of the total decrease, \$950K was due to the acquisition of artwork for the permanent collection—funds previously gifted and earmarked for the purchase.

The condensed financial information shown at the end of this Annual Report does not reflect a complete set of financial statements as the Museum’s FY23 financial statements are currently undergoing an audit. Once complete, copies of the audited financial statements will be available from the Director of Finance upon request.

CONDENSED STATEMENT OF FINANCIAL POSITION

The NBMAA continues to maintain a strong position. We had \$366k of liabilities compared to \$24.8M in assets, excluding the net book value of our land, building, and equipment at June 30, 2023.

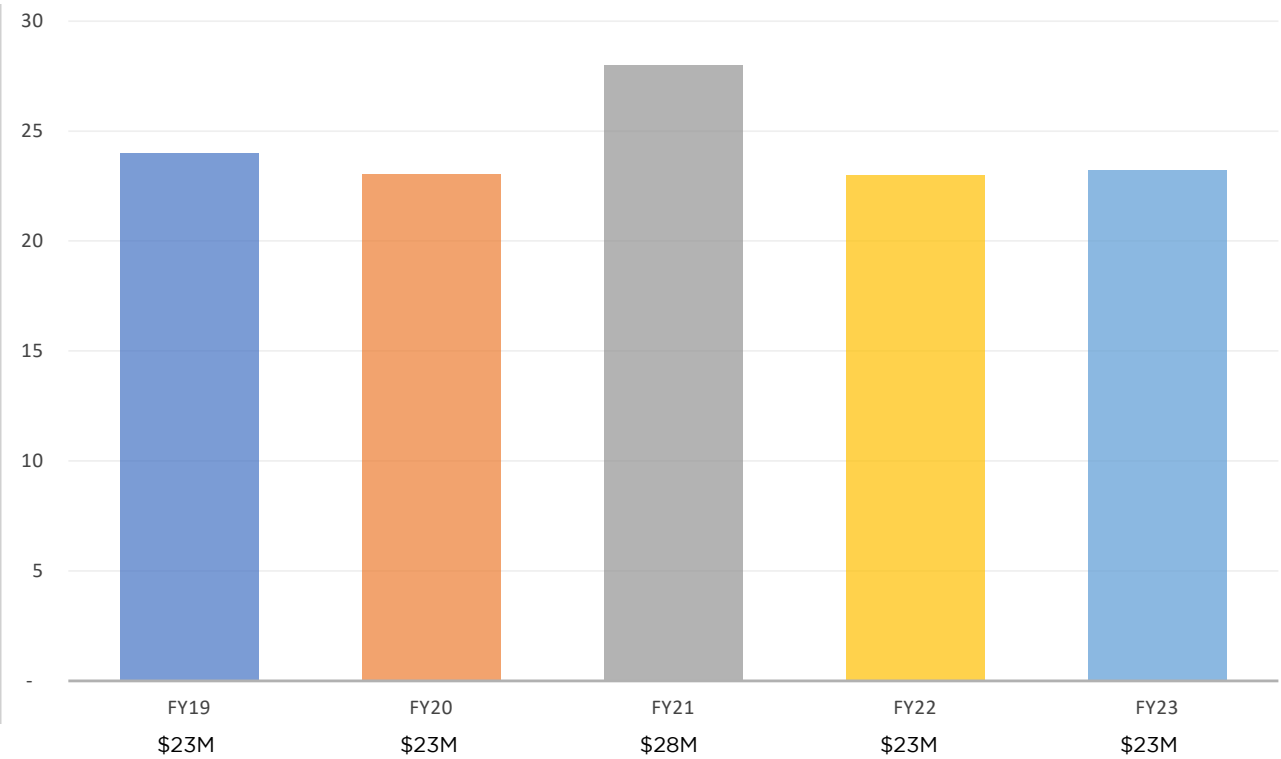
Our investments are managed with the assistance of experienced investment advisors, and performance is closely monitored by the Investment Committee of the Board of Trustees. As of June 30, 2023, the Museum’s invested asset portfolio (after draws for operating support) decreased by \$233k and now totals \$23.2M. Of that, \$16.2M was restricted for operations and \$7M was restricted for acquisitions and collections care.

CONDENSED STATEMENT OF ACTIVITIES

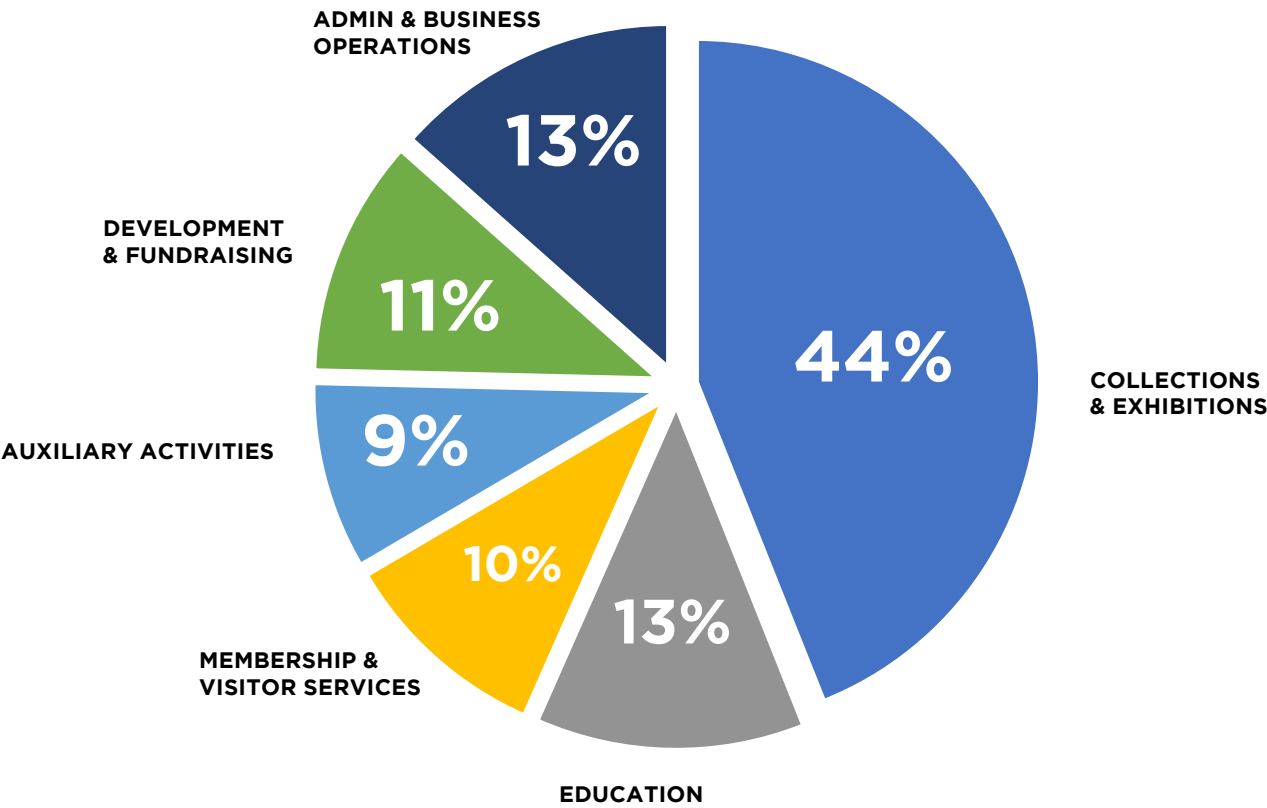
Earned revenue had significant growth with a 40% increase over FY22. Museum admission continues to grow, and our Museum Store had a record year in sales. In October 2022, the Art Party of the Year was held for the first time since 2019 adding \$200k to special event revenue.

Operating expenses increased by 11%. The majority of which was due to Development and Fundraising with the addition of an interim Director of Development, and the additional expenses related to the return of the Art Party of the Year.

NBMAA INVESTMENT BALANCES



OPERATING EXPENSES



CONDENSED FINANCIAL INFORMATION AS OF JUNE 30, 2023 (unaudited, in thousands)

CONDENSED STATEMENT OF FINANCIAL POSITION		2023	2022
Assets			
Cash & Equivalents	\$	167	880
Receivables	\$	271	591
Prepaid Expenses		122	134
Inventory		200	161
Investments at Market Value	\$	23,220	22,987
Beneficial interest in perpetual trusts		1,221	1,152
Land, property, and equipment (net)	\$	21,492	22,311
Total Assets	\$	46,693	48,216
Liabilities and Net Assets			
Liabilities	\$	366	506
Net Assets	\$	46,327	47,710
Total Liabilities and Net Assets	\$	46,693	48,216
CONDENSED STATEMENT OF ACTIVITIES			
Operating Revenue			
Contributions—gifts, grants, sponsorships	\$	1,276	2,157
Earned revenue - memberships, programs, admission, other		932	715
De-accessioned art work		219	20
Special events		1,357	1,143
Investment income for Operations		476	396
Total Operating Revenue	\$	4,260	4,431
Operating Expenses			
Program Expenses	\$	\$3,150	2,920
Development and Fundraising		468	243
Administrative and Business Operations		561	606
Total Operating Expenses	\$	\$4,179	3,769
Net change in assets from Operations	\$	\$80	662
Income (loss) from Investments, net of draw from operations		826	(4,663)
Non-operating Contributions - gifts, grants		445	475
Deaccessioned art work		0	1
Depreciation		(1,304)	(866)
Acquisitions of Art		(954)	-
Other Non-operating expenses		(2)	(4)
Net Assets Released From Restriction		(476)	(396)
Net Change in Assets	\$	(1,383)	(4,791)

The condensed information shown above does not reflect a complete set of financial statements. The Museum's financial statements have been audited and an unmodified auditor's report has been issued by our auditors. Copies of the audited financial statements are available from the Director of Finance upon request.

**NEW BRITAIN MUSEUM
OF AMERICAN ART
56 LEXINGTON STREET
NEW BRITAIN, CT
06052.1412**



ANNUAL REPORT | 2022-2023

BASIC INFO

MUSEUM & MUSEUM STORE HOURS

Monday: CLOSED

Tuesday: CLOSED

Wednesday-Sunday

10 a.m. – 5 p.m.

Thursday: 10 a.m.-8 p.m.

GENERAL ADMISSION

Members FREE

\$17 for Adults

\$12 for Seniors (age 62 and up)

\$10 for College Students

\$10 for 13-17 years old

12 and under FREE

SATURDAY ADMISSION

Free from 10 a.m. to noon thanks to support from the American Savings Foundation.

MUSEUM CAFÉ

Wednesday-Sunday

10:00 a.m.-2:30 p.m. featuring local New Britain fare.

ACCESSIBILITY

Please inquire at the Front Desk for any assistance you may require.

We are wheelchair accessible and have two wheelchairs available free of charge.

FOLLOW US ON

www.nbmaa.org

facebook.com/nbmaa

twitter.com/nbmaa

instagram.com/nbmaa56

tiktok.com/@nbmaa56