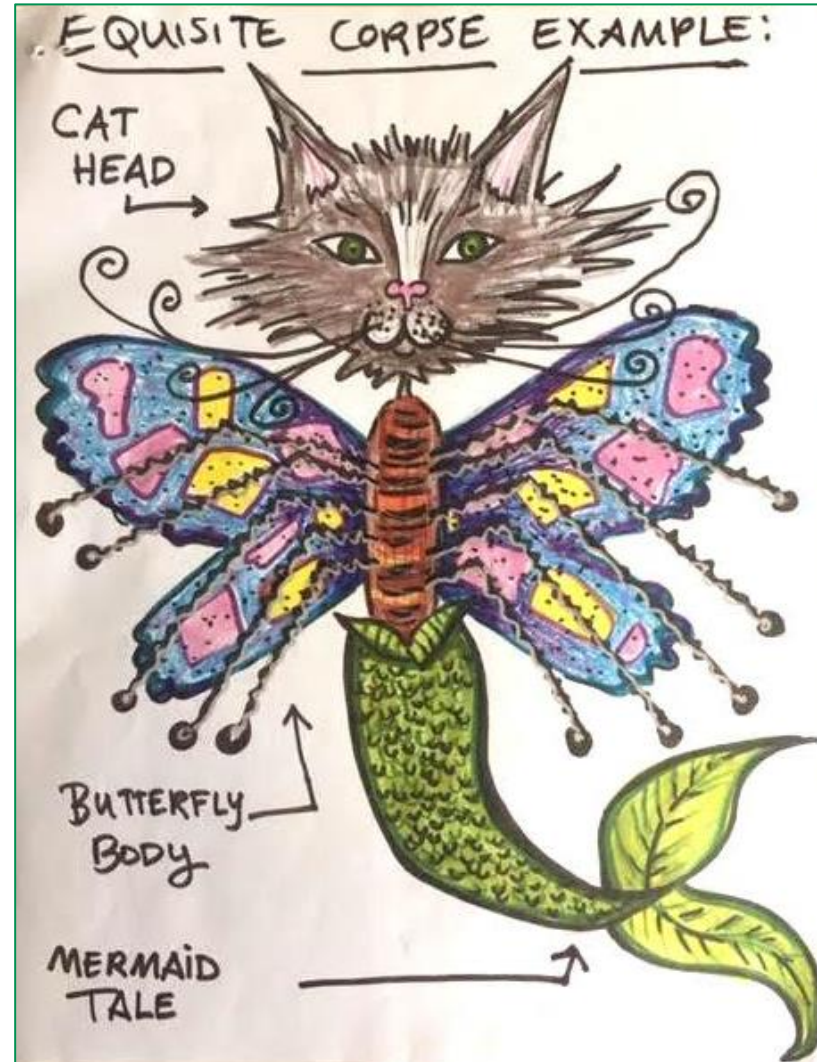


What is Art?

Creative Art Solving

Exquisite Corpse is a creation that combines body parts from different sources into one image to create an imaginary creature. This can be done by yourself, and/or with friends or family members. Here is an example created by Bonnie Sullivan, NBMAA Educator.



Connecticut State Art Standards: 6th-12th grade

VA:Cr2.1.6a Demonstrate openness in trying new ideas, materials, methods, and approaches in making works of art and design.

VA:Cr2.1.7a Demonstrate persistence in developing skills with various materials, methods, and approaches in creating works of art or design.

VA:Cr2.1.8a Demonstrate willingness to experiment, innovate, and take risks to pursue ideas, forms, and meanings that emerge in the process of art- making or designing.

VA:Pr6.1.6a Assess, explain, and provide evidence of how museums reflect history and values of a community.

VA:Pr6.1.8a Analyze why and how an exhibition or collection may influence ideas, beliefs, and experiences.

VA:Cr1.1.1a Use multiple approaches to begin creative endeavors.

VA:Cr2.1.1a Engage in making a work of art or design without having a preconceived plan.

Materials:

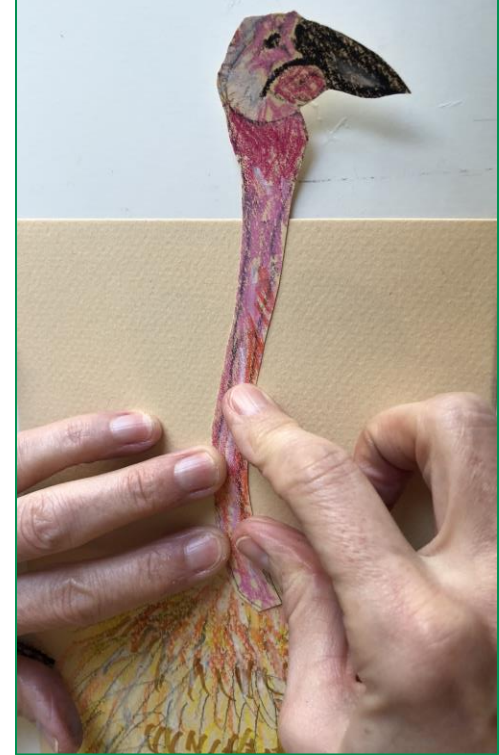
- Any type of paper, approximately 9x12 or any size you may have.
- Pencils
- Markers/crayons/colored pencils
- Varying supplies such as recyclable materials, magazine pictures, newspaper, popsicle sticks, googly eyes, sequins, pipe cleaners, yarns, ribbons, construction paper, glue, scissors, etc.



1) Your Exquisite Corpse can be drawn with body parts from different animals. One example is shown on the first slide, where a cat face, a butterfly body and a mermaid's tail have been combined to create a new, imaginary creature.



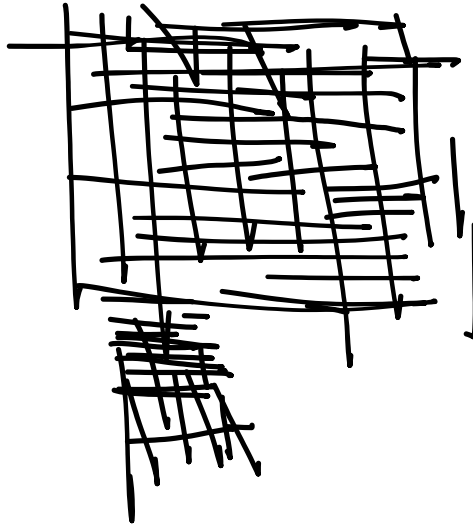
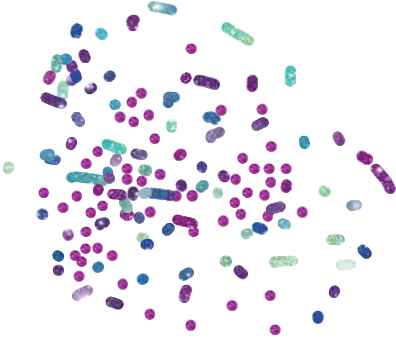
In this example, I drew a cat's body. Then, I added bat wings and a flamingo head.



2) You can add color values and texture to your drawn images.

(Values are lights and darks of a particular color and Texture means how something feels or appears to feel).

Here are some examples of this. **Stippling** is the use of small dots, **Crosshatching** is using a whole bunch of lines that look like tic-tac-toe and **Scumbling** is using lines that look like a lot like scribbling.



3) Your new creature should also have a name or a title. You can also add a background showing where your creature might live, or to give it more personality.

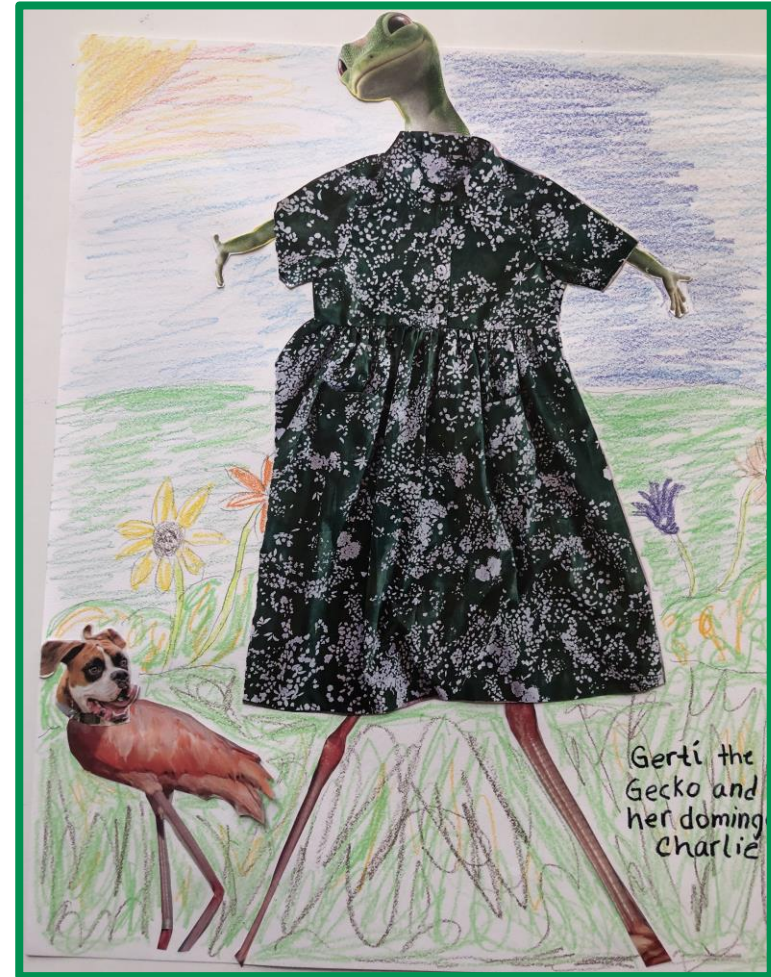


Group Option: An alternative way to make an Exquisite Corpse is to create it together with other people. Each person separately creates a different body part. Then, those body parts are combined to make a new Exquisite Corpse, created by the group.

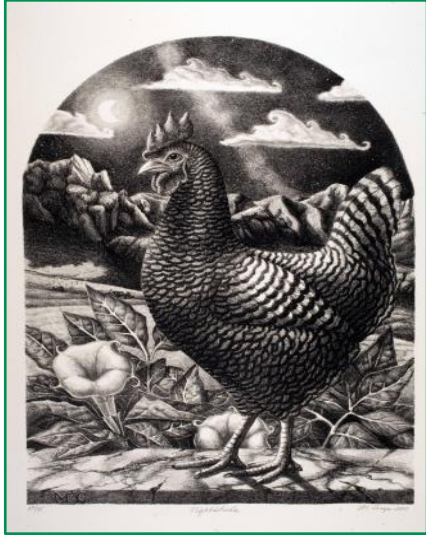
4) You can also create your exquisite corpse from body parts cut from magazines and/or newspapers.



In this example, I cut out images from magazines to create Gerti the Gecko, who is part gecko, part human and part flamingo. Charlie, her "domingo," is part dog and part flamingo.



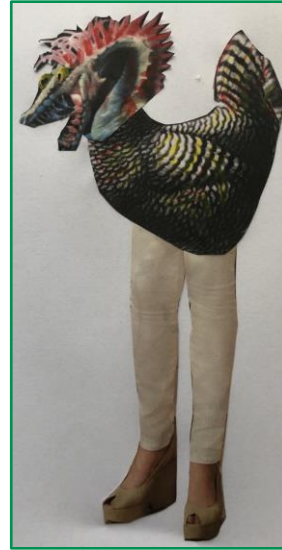
5) Another way you can create your Exquisite Corpse can also be made with body parts cut out from printed copies of works from the New Britain Museum of American Art's collection. Visit eMuseum - <http://ink.nbmaa.org/collections> to find lots of great works of art!



Night Shade
Margie Crisp, 2001



Twilight Terrors
Rowena A. Morrill, 1979



In this example, copies of two works from the museum were printed. Then the body of the Chicken, and the head of the Dragon, were cut out and combined with legs cut out from a magazine, to create an Exquisite Corpse, "Waiting for the the Bus."