

# Exhibitions



*The Whole Booke of Psalmes*, London, Company of Stationers, 1643.

—Through April 13  
—New York City

*Judging a Book by Its Cover: Bookbindings from the Collections of The Grolier Club, 1470s-2020* highlights selections from seven centuries of the Grolier Club's collection of bindings. The exhibition explores the history of decorated bindings, book bindings as three-dimensional art objects, and what makes a binding collectible. Items on view include a silver filigreed and jeweled miniature Book of Hours (1673) and a gilt maroon goatskin binding from a Vatican bindery presented to Cardinal Basadonna (1674).

The club is located at 47 East 60th Street. Hours are Monday through Saturday, 10 a.m. to 5 p.m. There is no charge for admission to the exhibition. For more information, visit the website ([www.grolierclub.org](http://www.grolierclub.org)) or phone (212) 838-6690.

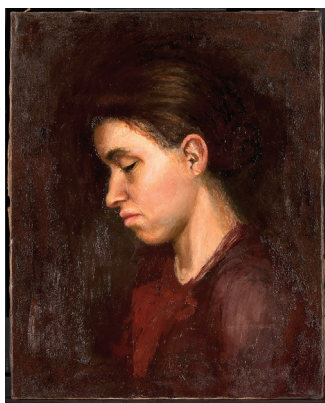


David Plowden (b. 1932), *Locomotive Number 5145 Being Serviced in Roundhouse, St. Luc Engine Terminal, Canadian Pacific Railway, Montreal, Quebec*, 1960. © David Plowden.

—Through April 14  
—Middlebury, Vermont

*David Plowden: Portraits of America* at the Middlebury College Museum of Art is arranged around the major themes that dominated the artist's body of work: locomotives, steamships, steel mills, bridges, small towns, and the agricultural landscapes of the Midwest. These photographs form a portrait of some key aspects of life in the United States and Canada in the second half of the 20th century, a period of great economic, social, and environmental change.

The museum is located at 72 Porter Field Road. Hours are Tuesday through Friday, 10 a.m. to 5 p.m.; and Saturday and Sunday, noon to 5 p.m. There is no charge for admission. It is closed during college holidays; check the website ([www.middlebury.edu/museum](http://www.middlebury.edu/museum)) or phone (802) 443-5007.



Thomas Eakins (1844-1916), *Portrait of Ella Crowell*, circa 1892, oil on canvas, 19 1/4" x 10 1/2". Fitchburg Art Museum, gift of Nancy Crowell Reinbold, 2015.33. Image courtesy Fitchburg Art Museum.

—Through June 2  
—Fitchburg, Massachusetts

Ella Crowell (1873-1897) was an important figure in the art and life of her uncle Thomas Eakins, who painted her in *Baby at Play* (1876) but was later held responsible by her family for her mental decline and early death. *Pictured by Eakins: Ella Crowell as Model and Student* at the Fitchburg Art Museum examines the broader scope of Crowell's experience.

The museum is located at 185 Elm Street. Hours are Wednesday through Friday, noon to 4 p.m.; Saturday and Sunday, 11 a.m. to 5 p.m.; and until 7 p.m. the first Thursday of the month. Admission is \$9 for adults; \$5 for seniors and college students; and free for members, those 18 and under, and active military and their families with ID. Check the website ([www.fitchburgartmuseum.org](http://www.fitchburgartmuseum.org)) for more information, including other discounts, or phone (978) 345-4207.



Micah Williams, *A Trenton Gentleman*, pastel on paper, possibly Monmouth County, New Jersey, after December 21, 1818. Collection of Edward King.

—Through June 30  
—Piscataway, New Jersey

Traveling portrait artist Micah Williams (1782-1837) was prolific, leaving 272 known surviving works. *Micah Williams: Portrait Artist* at the Cornelius Low House Museum features 35 paintings that trace the transformation of the artist from being a silver plater to working as a traveling artist.

The museum is located at 1225 River Road. It is open Wednesday through Friday, 10 a.m. to 4 p.m.; and Saturday and Sunday, noon to 4 p.m. There is no charge for admission. For more information, see the website ([www.middlesexcountynj.gov/?navid=423](http://www.middlesexcountynj.gov/?navid=423)) or phone (732) 745-4177.



Barbara Ernst Prey, *Red Cloak Blue Bucket*, 2019, watercolor and drybrush on paper, 28" x 40".

—Through October 6  
—New Britain, Connecticut

**HANDLED WITH CARE:** *Shaker Master Crafts and the Art of Barbara Prey* is a collaboration between Hancock Shaker Village and the New Britain Museum of American Art featuring nearly 100 Shaker objects with handles such as tools, baskets, tubs, pails, and sewing boxes along with a series of large-scale paintings by contemporary artist Barbara Ernst Prey (b. 1957) inspired by Hancock Shaker Village.

The museum is located at 56 Lexington Street. Hours are Wednesday through Sunday, 10 a.m. to 5 p.m.; and Thursday until 8 p.m. Admission is \$17 for adults; \$12 for seniors; \$10 for college students and those 13 to 17 years; and free for members, for those 12 and under, and for all 10 a.m. to noon on Saturdays. Online reservations are encouraged; visit ([www.nbmaa.org](http://www.nbmaa.org)) or phone (860) 229-0257.

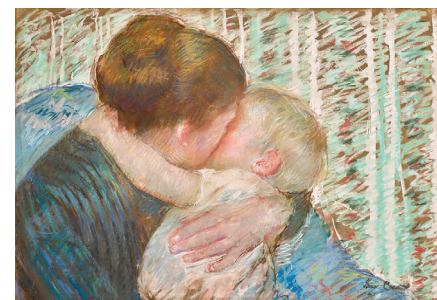


Dress, circa 1835, cotton, linen, and silk. On loan from Mary D. Doering, T097-2017, 94. Photo courtesy the Art Museums of Colonial Williamsburg.

—Through March 2, 2025  
—Williamsburg, Virginia

*Elegance, Taste, and Style: The Mary D. Doering Fashion Collection* at the DeWitt Wallace Decorative Arts Museum, one of the art museums of Colonial Williamsburg, offers the first of a three-part exhibition of more than 150 objects of this major collection of gowns, jackets, waistcoats, shoes, and more dating from 1700 through 1840.

The museum is located at 301 South Nassau Street. It is open daily, 10 a.m. to 5 p.m. Single-day admission is \$14.99 for those 13 and over and \$8.99 for youths ages 6 to 12. Visit the website ([www.colonialwilliamsburg.org](http://www.colonialwilliamsburg.org)) for more information and complete pricing details, or phone (855) 296-6627.



Mary Cassatt (1844-1926), *A Goodnight Hug*, 1880, pastel on brown paper laid down on board, 16 1/16" x 24 3/4".

—May 18 to September 8  
—Philadelphia, Pennsylvania

Mary Cassatt committed herself to a career as a professional artist and made the social, intellectual, and working lives of women a core subject of her art. *Mary Cassatt at Work* at the Philadelphia Museum of Art will present over 130 diverse works that follow her evolving practice.

The museum is located at 2600 Benjamin Franklin Parkway. Hours are Thursday through Monday, 10 a.m. to 5 p.m.; and until 8:45 p.m. on Friday. Admission is \$30 for adults; \$28 for seniors; \$14 for students with ID; and free for members and for youth 18 and under. Pay what you wish on the first Sunday of the month and on Fridays 5 to 8:45 p.m. For more information, visit ([www.philamuseum.org](http://www.philamuseum.org)) or phone (215) 763-8100.



John Steuart Curry, *The Tornado (Tornado over Kansas)*, 1929, oil on canvas, 46 1/4" x 60 3/8". Collection of the Muskegon Museum of Art. Hackley Picture Fund purchase, 1935.4.

—May 23 to September 2  
—Muskegon, Michigan

*John Steuart Curry: Weathering the Storm* at the Muskegon Museum of Art features works that define the Midwest and tell the story behind the art and life of John Steuart Curry (1897-1945), considered one of the three great painters of Regionalism along with Thomas Hart Benton and Grant Wood. Curry's paintings depict picturesque rural landscapes and the devastating natural disasters that affected the Midwest in the late 1920s.

The museum is located at 296 West Webster Avenue. Hours are Sunday through Saturday, 11 a.m. to 5 p.m.; and until 8 p.m. Thursday. Admission is \$10 for adults; \$8 for seniors; \$6 for students 17 and over with ID; and free for members, those 16 and under, and for all on Thursdays. For more information, visit ([www.muskegonartmuseum.org](http://www.muskegonartmuseum.org)) or phone (231) 720-2570.

Admission information for these exhibitions was accurate as of press time. Please note that some venues require advance tickets. *Maine Antique Digest* welcomes brief announcements of exhibitions at galleries, museums, or other venues. Email to [exhibitions@maineantiquedigest.com](mailto:exhibitions@maineantiquedigest.com) or mail to M.A.D., PO Box 1429, Waldoboro, ME 04572.

