



NBMAA

2021 Fall Newsletter

Dear Friends,



As Chair of the Board of Trustees, I am honored to have the Board's trust in me to serve the Museum as the Interim Director during the Museum's leadership transition. With this privilege comes a great sense of obligation to serve its people and collections during a time of optimism.

Throughout my many years with the NBMAA serving in a number of different capacities, I am continuously impressed by the talented determination of the individuals managing this Museum and touched by their shared love of this institution. Within the creative environment comprising exhibitions, collections, education, visitor services, facilities, finance, and marketing, our staff collaborates—driven by their common passion for amplifying the voices defining American art and expanding their reach to widening audiences.

I have also had the great honor of working with NBMAA's Docents—130 plus strong—who bring a wide-ranging collection of professional, educational, and life experiences to their invaluable service of connecting the public with our collections and special exhibitions. I wish to thank them, alongside our numerous volunteers, for their service to the NBMAA.

Excitement abounds this fall with the recent opening of *Strict Beauty: Sol LeWitt Prints*, and anticipation of November's LeWitt Family Staircase installation by his daughter, Eva LeWitt, concurrent with the opening of *Steel, String, Spit Bite: Highlights from the LeWitt Collection*. This showcase of Sol LeWitt's esteemed work arrives at a fitting time for the NBMAA as we celebrate the Sesquicentennial of the City of New Britain. Sol was both a celebrated artist and a New Britain native.

This fall also welcomes the return of many treasured traditions at the Museum. Beginning in October, adult and children's classes return to the Museum, alongside festive onsite public programming such as our First Friday, and memorable private event rentals. Additionally, we are pleased to introduce new programming to the Museum, including all new Pub Nights, which will fully utilize our newly renovated Landers House.

I joyfully welcome you this autumn season to our cherished Museum to discover rejuvenation and inspiration.

Dona V. Cassella

Interim Director and Chair of the Board of Trustees

MUSEUM NEWS

**ANNUAL MEETING
SAVE THE DATE
October 20**

IN MEMORIAM

Nancy U. Bolgard, former member
Eliot B. Barron, former member
Sally D. Carrier, longtime member
Manon-Lu Christ, longtime member, donor and volunteer
Carol Cunin, longtime member and donor
Ellen Douglass, former member and donor
Barbara J. Erickson, former member

Howard A. Fromson, artist, longtime John Butler Talcott Society Member and donor, former volunteer, Trustee Emeritus
Herbert Gerjuoy, former member
John Gonzalez, longtime member and donor
William E. Huber, longtime member and donor
Sally A. Ivaldi, longtime member and donor
John Kaestle, former trustee, volunteer and member

Witold Kawecki, former member
Laura Kinyon, former member
JoAnne McClurg, former member
Joseph Olejarz, former member
Elizabeth A. Olson, longtime member and donor
Claire Phillips, former member
Hamp Pratt, former member
Thomas Reilly, former member
Eric M. Rickard, former member and donor
Earl F. Schindler, former

member
Marlene Shea, former member
Dorothy L. Smith, former member
Gail S. Smuda, former member
Ann P. Steele, former member
David Thomas, former member
Bruce P. Wallace, former member
Barbara Waskowitz, former member, donor and volunteer
Fran Weiner, former member

NEW BRITAIN MUSEUM OF AMERICAN ART

<i>Strict Beauty: Sol LeWitt Prints</i>	4
<i>Eva LeWitt</i>	5
<i>Steel, String, Spit Bite: Selections from the LeWitt Collection</i>	6
Frederick Carl Frieseke, <i>The Bird Cage</i>	7
Education and Community	8
Membership	15
Social Programs and Events	16
Member and Museum Spotlight	18

EXHIBITION SUPPORT

Strict Beauty: Sol LeWitt Prints is made possible by the David T. Langrock Foundation, The Aeroflex Foundation, and the Christine E. Moser Foundation. Additional support is provided by Conry Asset Management and Hartford HealthCare.

All images © Estate of Sol LeWitt 2021

Front Cover: Sol LeWitt, *Curvy Brushstrokes I*, 1997, Etching with color sugar lift aquatint, 39 7/8 x 14 7/8 in., LeWitt Collection, L.2021.9.18T

Eva LeWitt's NBMAA installation is made possible with support from the Howard Fromson Endowment for Emerging Artists.

Our thanks to NBMAA supporters

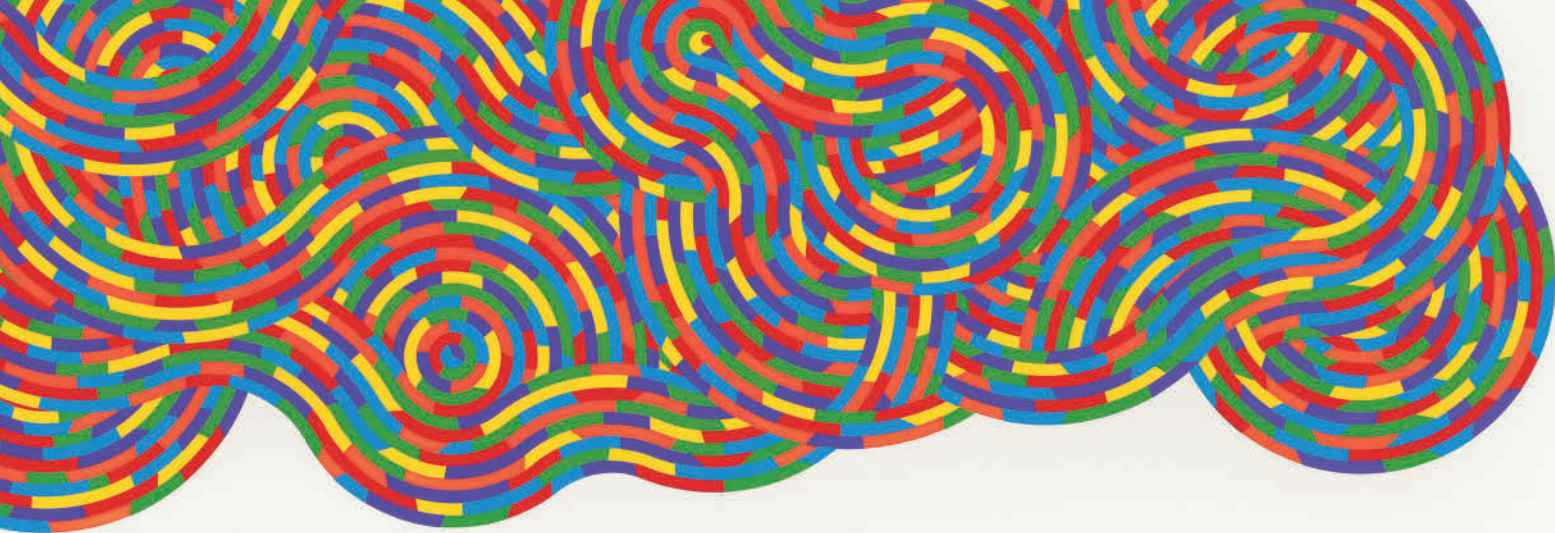


StanleyBlack&Decker

Jay and Lorraine
Breuninger Memorial
Fund



wshu | Public Radio



Sol LeWitt, *Whirls and Twirls (Color)*, 2005. Linocut, image: 15 7/8 x 46 inches. New Britain Museum of American Art, Gift of Sol LeWitt, 2007.136.449.1-2SL.

STRICT BEAUTY

SOL LEWITT PRINTS

September 18, 2021 – January 9, 2022

William L. and Bette Batchelor Gallery

Born in Hartford, Connecticut, and raised in New Britain, Sol LeWitt (1928-2007) was a pioneer of conceptual art and one of the most influential artists of the second half of the twentieth century. Best known for his programmatic wall drawings and modular structures, LeWitt also generated more than 350 print projects, comprising thousands of lithographs, silkscreens, etchings, aquatints, woodcuts, and linocuts.

Strict Beauty: Sol LeWitt Prints is the most comprehensive presentation of the artist's printmaking to date, including eighty-three objects, both single images and series, for a total of over 250 prints. The exhibition begins with the artist's earliest prints: figure studies and scenes of urban life made at Syracuse University and the Hartford Art School. In terms of style and content, these works are in stark contrast to LeWitt's mature printmaking, which is organized in four sections based on the various abstract languages he pursued

throughout his career: "Lines, Arcs, Circles, and Grids," "Bands and Colors," "From Geometric Figures to Complex Forms," and "Wavy, Curvy, Loopy Doopy, and in All Directions." Highlighting the essential role of prints in LeWitt's oeuvre, the exhibition explores the variety of his output and deepens our understanding of the genealogy of his distinct geometric and linear formal vocabularies.

Curated by David S. Areford, professor of art history at the University of Massachusetts Boston, the exhibition is accompanied by an in-depth catalog co-published by the New Britain Museum of American Art, Williams College Museum of Art, and Yale University Press.

For Related Programming see Page 12



Top: Eva LeWitt, *Untitled Mesh A-J*, 2020, The Aldrich Contemporary Art Museum, Courtesy of The Aldrich Contemporary Art Museum and VI, VII, Oslo
 Bottom: Eva LeWitt, *Untitled (Flora)*, 2018. Installation view: The Jewish Museum, New York, 2018-2019. Courtesy of The Jewish Museum, New York and VI, VII, Oslo
 Photograph by Jason Mandella

Eva LeWitt

Opens November 11

New York-based artist Eva LeWitt creates optically dazzling installations and sculptures fashioned from everyday commercial and industrial materials that she casts, dyes, and cuts by hand. Her large-scale abstract artworks comprise hanging geometric forms and vibrant colors that evoke domestic or theatrical decor, and that explore tensions between gravity and weightlessness, transparency and opacity, abstraction and decoration.

A new site-specific work created for the NBMAA, LeWitt's monumental sculpture is composed of bands of colorful coated mesh fabric that, when assembled, suggest a dynamic interplay of linear and circular forms. In this work, LeWitt transforms lengths of coated mesh, which is typically used for high-visibility work wear or privacy screens, into an immersive environment that activates the Museum's spaces with shimmering color and shape. While this is her first collaboration with the NBMAA, LeWitt has been featured in solo exhibitions at prestigious institutions including the ICA Boston; The Aldrich Contemporary Art Museum; the American Academy of Arts and Letters; and The Jewish Museum.

ARTIST BIO

New York based artist Eva LeWitt's site-specific installations and wall-based sculptures address sculptural concerns such as volume and weight, and the tensions between industrial and hand-made fabrication. Using soft, pliable, semi-transparent and semi-absorptive materials such as acetate, latex and sponge, she subtly renders variations in tone, exploring the expressive properties of light through strategies of accretion, modularity and repetition.

LeWitt's works are held in the permanent collections of the Hirshhorn Museum, Washington D.C.; Kistefos Museum, Jevnaker, Norway; and X Museum, Beijing.

LeWitt's works can currently be seen in Ground/Work (2020-2021) at the Clark Art Institute in Williamstown, Massachusetts. A large-scale, site-responsive installation by the artist is also on view at the ICA Boston (2021).

EXHIBITION

Steel, String, Spit Bite: Selections from the LeWitt Collection

November 11, 2021 - March 6, 2022

Throughout his career, Sol LeWitt assembled a remarkable collection of more than 4,000 works, many of which were derived from purchases or trades with both well-known and emerging artists whom he encouraged and supported.

Curated by artist Andy George Robertson, *Steel, String, Spit Bite: Highlights from the LeWitt Collection* will be the first exhibition ever to focus exclusively on work by women artists in the LeWitt Collection. Featuring a remarkable cadre of over 40 artists—including Lynda Benglis, Ellen Carey, Eva Hesse, Sylvia Plimack Mangold, Shirin Neshat, Janet Passey, Adrian Piper, Dorothea Rockburne, Kiki Smith, Pat Steir, and Jessica Stockholder—the exhibition reveals insights into LeWitt's social milieu and the artistic concerns and interests they shared.

Spanning diverse mediums of photography, sculpture, textile, prints, and painting, *Steel, String, Spit Bite* explores aspects of abstraction and figuration, materiality and process, in works collected by LeWitt from the 1960s to the 2000s—many of which will be on view for the first time ever.

Andy George Robertson is a curator, artist, and archivist living and working in New York City.



Cara Perlman, *Rock Thrower*, 1991. Plaster, wire, gauze, enamel paint 61 x 43 x 22 inches, LeWitt Collection, Chester, Connecticut Photo: Cultural Preservation Technologies, Inc.

Frederick Carl Friesseke, *The Bird Cage*

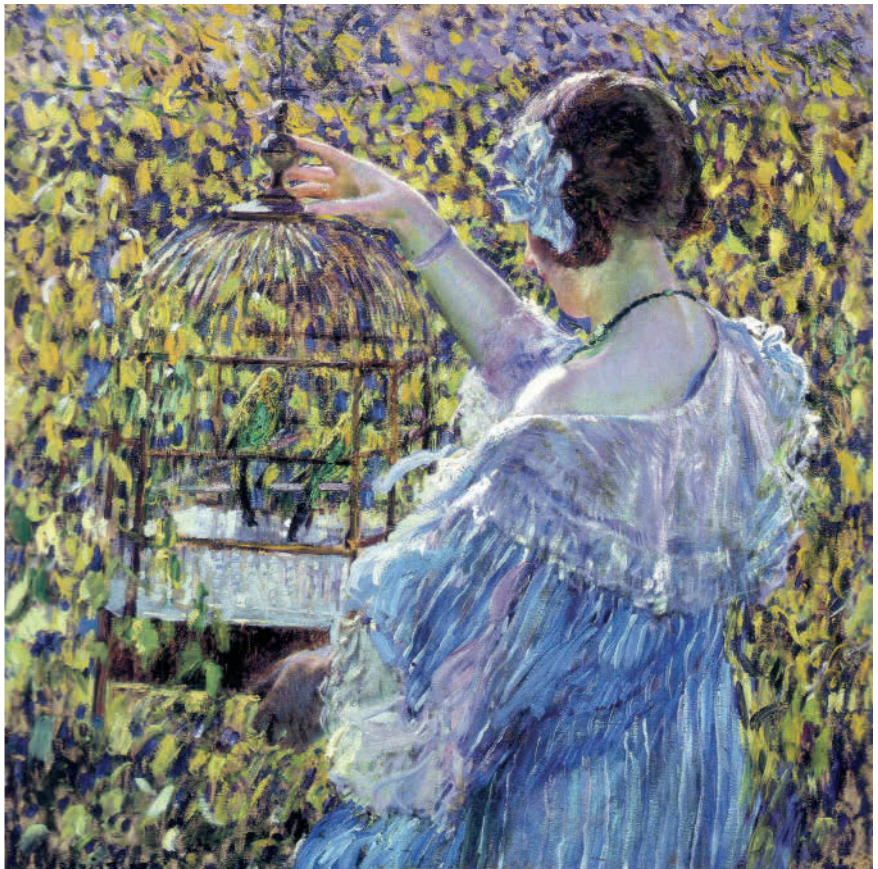
Born in Owosso, Michigan, to a family of German immigrants, artist Frederick Carl Friesseke (1874-1939) would spend much of his life traveling between the United States and Europe before eventually taking up permanent residency in France. In 1900 he visited Giverny, the home of Claude Monet, where a colony of Americans, among them Theodore Robinson, John Leslie Breck, Willard Metcalf, and Theodore Butler, had explored landscape painting in the late 1880s. Friesseke soon became a prominent member of a circle of American painters there who shifted their focus from landscapes to figural themes.

Under the influence of the French painters Nabis Pierre Bonnard and Edouard Vuillard, Friesseke's interests continued evolving as he turned to painting his models outdoors in brilliant sunlight. His figures retained an academically rendered solidity, but now his backgrounds adhered more to the French Impressionist manner of broken brushwork and dissolution of form. It was this style of decorative Impressionism that gave

Friesseke his niche in the American art world. Friesseke was particularly praised for his brilliant garden scenes and images of women in interiors, which began to take on a more monumental, somber air.

By the summer of 1910, when *The Bird Cage* was probably painted, Friesseke had overcome any initial difficulties faced when painting outdoors, and had staked his claim on the subject of the female figure outdoors. In this particular work, he approached the many design problems offered by his subject with absolute confidence. *The Bird Cage* is graceful and accurate; the shimmering colors of turning leaves are vivid and convincing. Within this dazzle of color and the anomalous planes of fabric and foliage, the strength and volume of the model's body are inferred, while the viewer's eye is led to the tender details of sun spots, captive birds, and the transparent crimson of the fingers on her right hand as it touches the top of the hanging cage.

Frederick Carl Friesseke, *The Bird Cage*, c. 1910, Oil on canvas, 32 x 32 in., John Butler Talcott Fund, 1917.02





Summer Spectacular



Walter Wick I Spy: Summer, Autumn, and Winter installation

EDUCATION AND COMMUNITY

Children and Families

The NBMAA was thrilled to welcome hundreds of children and families this past summer through the Governor's CT Museum Summer initiative. The Museum is equally thrilled to announce that all children under 18 receive free admission year-round, effective immediately.

This fall we are pleased to announce the return of our studio classes and workshops including Studio@4, Art Start, Art Explorers, and more!

Visitors are also invited to explore our new Stanley Black & Decker Makerspace, and enjoy self-guided art activities inspired by the work of Sol LeWitt and Eva LeWitt. In the reopened Art and Book Nook, families can also relax and read books on art and artists; learn through play with games and puzzles; and engage in creativity with rotating art activities inspired by Walter Wick.

STUDIO@4

Ages 9-12 | Studio@4 exposes kids to various art-making processes and techniques. Join us every month to work with a different guest artist and master a new medium!

October | Ideas Make Art
Thursdays, October 7 - 28, 4-5:30 p.m.

November | Process to Print
Thursdays, November 4 - 18, 4-5:30 p.m.

December | Holiday Gift Making
Thursdays, December 2 - 16, 4-5:30 p.m.

ART EXPLORERS

Saturdays, 10:30 a.m.-noon.

Ages 6-8 | Students learn to express their creativity using varied art methods and materials to create personal works of art inspired by Museum pieces. Explore a different area of the collection with new projects each week.

ART START

Saturdays, 11-11:45 a.m.

Ages 3-5 | This program helps caregivers and young children discover art together at the Museum. Listen to a story and then explore line, shape, color and other elements of art with teaching artist Margaret Freedman.



A drumming lesson for all ages at NBMAA's 20th Juneteenth Celebration.

BIRTHDAY PARTIES

Celebrate your child's next birthday at the NBMAA! Invite your friends and family to a fun-filled afternoon of Museum exploration, art making, and festivities. The 2-hour party begins with a scavenger hunt through the galleries where we will look for colors, shapes, animals, people, and more. Then, the birthday child and friends will create a work of art in our art studios. To book your party, go to nbmaa.org/birthday-parties.



Everyone appreciates the opportunity to don their fabulous costumes at the NBMAA's safe and festive Community Halloween Celebration.

Community

HISPANIC HERITAGE CELEBRATION

Sunday, October 3, 11 a.m.–2 p.m.

FREE ADMISSION

In honor of Hispanic Heritage Month, the NBMAA is celebrating the cultural influences of Hispanic Americans by showcasing artists, and businesses from the surrounding area in a day of events for children and families.

COMMUNITY HALLOWEEN CELEBRATION

Sunday, October 31, 11 a.m.–2 p.m.

FREE ADMISSION

Kick off Halloween at the NBMAA! Visitors are encouraged to show off their best costumes and partake in some wicked fun. Activities include art-making in the Stanley Black & Decker Makerspace, scavenger hunt in the galleries, caricature drawings by artist Matt Ryan, Inside-Out family tours of the permanent collection, ghoulish dance performances, and a costume parade around the Museum's campus.

Holidays at the NBMAA

HOLIDAY DECORATING

The tradition of holiday decorating continues this year with help from our Holiday Decorating Committee. Decorated holiday displays will be on view to the public in The Stanley Works Center. The Committee will once again enthrall Museum visitors with an art-inspired theme for the soaring lobby tree, featured alongside Hanukkah, Kwanzaa, and Three Kings Day displays arranged by Community Advisory Group members.

EDUCATION AND COMMUNITY

WREATH DISPLAY & SILENT AUCTION

Friday, December 3 – Sunday, December 5

New this year! The Museum will be holding a silent auction for holiday wreaths decorated by local artists and businesses. Wreaths will be displayed in the Stanley Works Center and Museum Café from December 3-December 5. Preview bidding starts on December 3 during First Friday. Bidding will conclude at the end of the day Sunday, December 5 the Community Celebration. Proceeds of the wreath auction will support the Museum and the participating artists.

HOLIDAY CELEBRATION & MAKER'S MARKET

Sunday, December 5, 11 a.m.–4 p.m.

FREE ADMISSION

Greet the winter holidays at the Museum! On this festive day, visitors can shop craftworks and goods from local sellers and marvel at the one-of-a-kind wreaths and holiday displays throughout the galleries, accompanied by sounds of holiday cheer from CMHA's Carols for Community.

WINTER BREAK FOR FAMILIES

Last week of December

You don't need to spend a lot of money to entertain your family during winter break. All children under 18 receive free admission plus free admission for one adult caregiver each. Roam around the beautiful Museum enjoying in-gallery activities, scavenger hunts, and more.



WITHOUT A WHISPER: A FILM BY KATSITSIONNI FOX

November 10, 1 p.m., onsite and livestream, 27 minutes

The untold story of the profound influence of Indigenous women on the beginning of the women's rights movement in the United States.

ART HISTORY AND MUSEUM STUDIES COURSES | MUSEUM MASTERS

Presented by scholars and specialists, these mini courses will provide an introduction to American art. By looking at the NBMAA's permanent collection, each multi-part class will take a look at the lives of American artists and special topics related to the role of museums in society.

MUSEUM MASTERS | MARY CASSATT

Thursdays, November 4, 11, & 18, 6–7 p.m.

INSTRUCTOR: Rhea Higgins

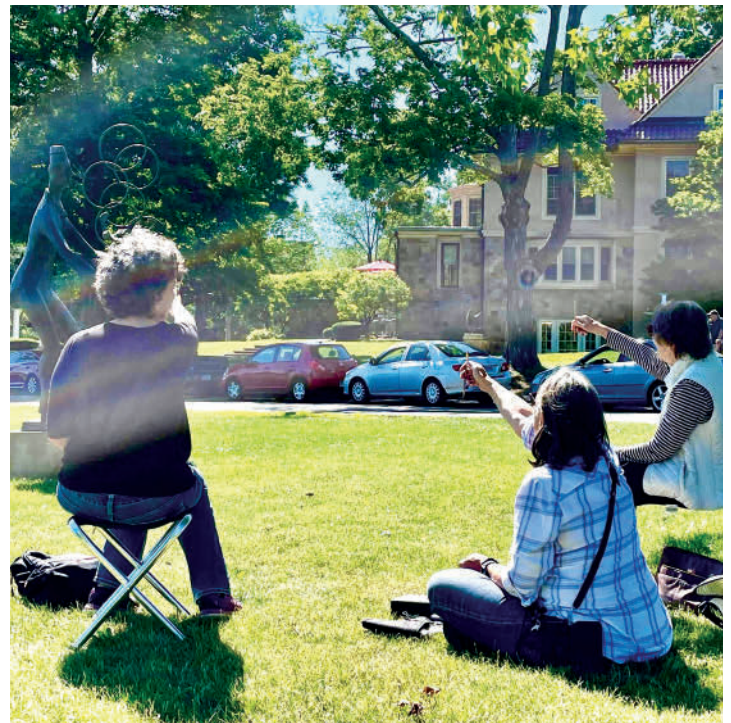
This class will be presented via Zoom.

MUSEUM MASTERS | WOMEN ARTISTS

Thursdays, December 2, 9 & 16, 6–7 p.m.

INSTRUCTOR: Bernadine Franco

This hybrid class will be presented on ground and live via Zoom.



Tours

We invite visitors to take a closer look at our permanent collections and special exhibitions with these drop-in Docent-led tours.

Permanent Collection Highlights

Thursdays, 1-2 p.m. | Fridays, 1-2 p.m. | Saturdays, 1-2 p.m.

Special Exhibitions

Thursdays, 6-6:30 p.m. only in October
Sundays, 1-2 p.m.

Join a Docent-led tour through the NBMAA's newest special exhibition *Strict Beauty: Sol LeWitt Prints*.

First Fridays | 30-minute Masterpiece Tour

First Friday of every month, 6-6:30 p.m.

Running concurrently to the Museum's popular First Friday concerts, enjoy a short tour of the Museum's permanent collection

Outdoor Sculpture Tours

Saturdays 11 a.m.-12. pm. Month of October only.

Adult Tour Packages

Take a Docent-led tour of the NBMAA's permanent collection galleries and special exhibitions followed by a catered lunch in the newly renovated Landers House. Or enjoy lunch in the café with local fare. For parties larger than 10, a table will be reserved in the café.

VIRTUAL TOURS - Join a docent for a remote "walk" through the permanent galleries on a tour of the collection's highlights.

Far Left: Stanley Black and Decker Makerspace
Middle: Sketching Sculptures Workshop
Right: Docent Education for Outdoor Sculpture Tour



Adult Studio Workshops

STANLEY BLACK & DECKER MAKERSPACE **Jewelry-Making Basics with Jackie Bright**

Thursdays, October 7 & 14, 5:30–7:30 p.m.

Work with designer Jackie Bright in this introductory jewelry-making class. Participants will learn knotting and stringing techniques to create a one-of-a-kind jewelry set to take home using materials such as wood, glass, shells, semi-precious stones, and linen cord. Each participant will receive their own pre-packaged supplies.

Participants can register for package or individual sessions.

Digital Drawing & Painting with Raheem Nelson

Learn the basics of creating art on an iPad! In this three-part course, artists of all skill levels are encouraged to try their hand at drawing and painting using the Procreate app. Digital arts specialist and cartoonist Raheem Nelson will teach students foundational knowledge of the app and provide direction for creating still lifes, pop art illustrations, and more. Participants must bring their own iPad with the Procreate App pre-installed before class. A stylus is not needed but can be used as well.

Participants can register for package or individual sessions. 6:30–8 p.m.

October 21 | Still Lifes

November 18 | Pop Art

December 16 | Abstraction

STUDIOS

Weekly Watercolor Class with Mary Smeallie

Three sessions Wednesdays 2–4 p.m.

October 13, 20, 27

November 3, 10, 17

December 1, 8, 15

Printmaking Workshops with Jim Brunelle

Create linoleum cut and wood block prints inspired by *Strict Beauty: Sol LeWitt Prints*. Learn how to work with gauge knives to cut rubber plates to create your own block prints. Supplies included.

October 16, 23, and 30, 10 a.m.–noon

Spooky Paint Night with Mary Smeallie

Thursday, October 28, 6–8 p.m.

All supplies included; snacks and sparkling water provided; alcoholic beverages available for purchase. Create your own version of Charles Burchfield's *Lavender and Old Lace*, 1939–47.

Photo Collage Workshop with Rashmi Talpade **Makerspace or Studio A**

November 11 & 18, 6–7:30 p.m.

Join museum artist Rashmi Talpade in creating photo collages based on her series of public art urban landscapes. All levels welcome. Supplies provided.

Sol LeWitt Programming

Keynote Lecture: **David Areford**

September 23, 6 p.m.

Curator Conversation

October 24, 3–4 p.m.

Featuring curator David Areford in conversation with master printer Peter Pettengill, founder of Wingate Studio in Hinsdale, New Hampshire.

Gallery Talk and **Book Signing**

David Areford
November 4 and December 9, 1 p.m.

Docent Led Tours weekly starting **October 3**

Sundays at 1 p.m.

Thursdays at 6 p.m. through
Daylight Savings Time

Professional Development Day **for Teachers**

November 2, 9 a.m.–3 p.m.

Printmaking Workshops

October 16, 23, and 30,
10 a.m.–12 p.m.

Counterpoint and Line in Art and Music: **Sol LeWitt and the Interplay of Forms**

Part I: November 7, 3 p.m.
The West End String Quartet
Part II: January 9, 3 p.m.
Neely Bruce, pianist



Nor'Easter first prize: Martin Dimitrov, *Lost and Scared*

NOR'EASTER

THE 51ST ANNUAL JURIED MEMBERS EXHIBITION

AUGUST 12 – 29, 2021

WINNERS

FIRST PRIZE

Martin Dimitrov,
Lost and Scared

SECOND PRIZE

Merrill French, *Beginning the Descent
into Grand Central Terminal*

THIRD PRIZE

Jeanette Hammerstein, *goldfish bowl
and the sheets are clean*

JUROR'S CHOICE

Rebeca Fuchs, *Woman in a loop*

VISITOR'S CHOICE

Brian McClear, *Riki*



**YOU'RE
INVITED TO
THE ANNUAL
MEETING**

The Board of Trustees and Interim Director
of the New Britain Museum of American Art,
Inc. cordially invite you to the

Annual Meeting of the Membership
Wednesday, October 20, 2021, at
5 p.m. via Zoom

REGISTER HERE: bit.ly/3frpQux



Ken on left, and Mark on right, at the annual Art Party of the Year

Kenneth J. Carifa

SECRETARY, BOARD OF TRUSTEES

I was born in New Britain and have been a life long resident of the city. I first went to the Museum as a third grader and would frequently visit when I was in high school. At that time, the Museum was in the Landers House, and the art work on display rarely moved. As a result, I developed a good knowledge of the Museum's collection that has helped me while serving on the Collections Committee of the Museum's Board of Trustees.

I am an attorney and have been in practice for 39 years first as a member of the law firm of Camp, Williams & Richardson and since 2012 in solo practice here in New Britain. I have mostly handled probate and real estate matters in my practice. I also have handled some legal matters for the Museum on a pro bono basis.

I have first served on the Board of Trustees from 2005 to 2014 during which time I served as chair of the Long Range Planning Committee, Personnel Committee and co-chair of the Collections Committee. I rejoined the Board of Trustees in 2017 and currently serve as Secretary of the Board of Trustees. I am currently Chair of the Nominating Committee and served as co-Chair of the Development and Marketing Committee. I still

serve as a member of the Collections Committee. But what makes the Museum such a joy for me (besides the artwork) is the wonderful staff and many dedicated volunteers that keep the Museum running. I am married to Mark S. Garavel, who works for the Hartford Public School System as a Nutritional Field Manager. We both love to cook in our spare time. I also enjoy painting and have had works in the Members show in the past.

It is hard for me to select one work that is my favorite in the Museum's collection. When I was in grade school, my favorite painting was *Seal Rock* by Albert Bierstadt, which is a favorite of young visitors. The Benton murals and Colonial era portraits were teenage favorites. As I have gotten older, I now have other favorites, such as George Bellows, *The Big Dory*. As a member of the Collections Committee which helps select acquisitions, there are various newer works that become favorites such as Ike Ude, *Sartorial Anarchy*, or rarely seen works such as Luigi Lucioni's *Seven Textures* or Diane Blell's *Origin of Drawing*. The depth and breadth of the Museum's collection provides art to enrich every day and every mood.

Membership

As a member of the New Britain Museum of American Art, not only do you get unlimited free admission to the Museum, but you also receive priority program registrations, discount in the Museum Store and Café, and more! Your support as a member ensures the NBMAA remains one of the most vibrant arts centers in the region with high-quality exhibitions, permanent collection, and programs.

NBMAA memberships make great holiday gifts for friends, family, and colleagues! Be sure to purchase early to ensure a timely delivery.

Already a member? Consider upgrading for additional benefits. At the Friend's Circle Level and above you will receive access to 1,000+ museums with the North American Reciprocal Museum (NARM) benefit, or at the Artist's Circle and above you will unlock access to

the new Sylvia Bonney Halcyon Lounge. Passionate about the NBMAA? Become a Premier Member and join the ranks of the Museum's most dedicated contributors to gain exclusive access to the Museum through exhibition previews, off-site visits and programs, priority participation on NBMAA-organized trips, further discounts in the Museum Store, exclusive events and programs, and more – all designed to bring you closer to the NBMAA's mission.

To become a member, purchase a gift membership, or upgrade your membership, please contact Development and Membership Coordinator Jenna Lucas at (860) 229-0257, ext. 231.

A. Artist Graydon Parrish speaks in front of *The Cycle of Terror and Tragedy* in remembrance of 9/11

B. Renovated Landers House

C. Jennifer Wen Ma speaks to NBMAA docents in preparation for *An Inward Sea*



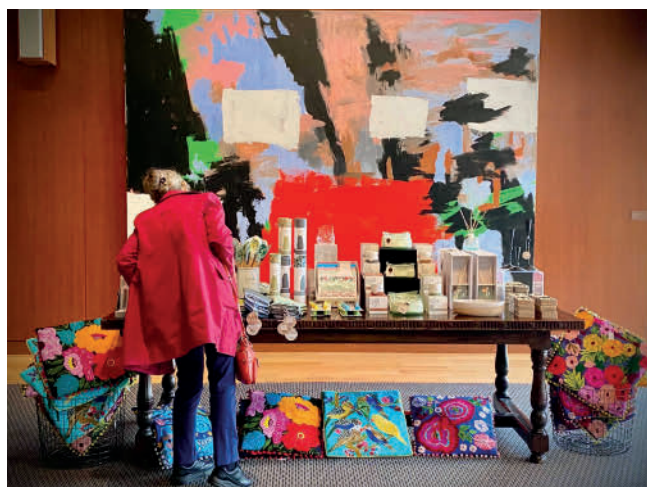
A



B



C



Member Shopping Day

Join us on November 16 as we once again open our Museum doors for the annual Member Shopping Day! We will be bringing in holiday gifts and winter merchandise sourced from our New England vendors alongside our beautiful Museum Store merchandise. In addition to our Museum Store, this socially distanced shopping experience will extend to both the Café and Stanley Works Center. New this year, we will have a do-it-yourself gift wrap station in the Stanley Black and Decker Makerspace.

Just like last year, members will save at least 20% off their entire purchase. Draw a ticket at checkout to save even more - anywhere from 25% - 50% off. One lucky shopper may get their entire purchase for free!

Registration is required via: <https://bit.ly/NBMAAshopping2021>

To redeem these discounts and be eligible to attend Shopping Day, join or renew your Membership online at nbmaa.org/support-us.

Fryderyk Chopin Society of Connecticut

Internationally renowned pianists present the works of Fryderyk Chopin and other musical masters.

3:00 PM | Stanley Works Center

09.26.21

Michael Lewin

10.31.21

Angela Cheng

11.21.21

Gil Kalish

03.27.22

Jay Herschberger

04.24.22

Piotr Alexewicz

05.22.22

Kate Liu

Fall & Winter Pub Nights

Join us in the newly renovated Landers House as we extend our Thursday night gatherings into Fall and Winter, and a rotating draft beer selection from local breweries Alvarium Beer Company, Five Churches Brewing, and more.

5:45 PM | Sylvia Bonney Halcyon Lounge

09.09.21

Jim Schriber Duo

10.07.21

Mass-Conn Fusion Duo

11.11.21

Matt Dwonszyk Duo

12.09.21

Jim Schriber Duo

01.13.22

Mass-Conn Fusion Duo

02.10.22

Matt Dwonszyk Duo

First Friday

Our signature social event, featuring live music, art, food, spirits, and good friends. New Britain's best Happy Hour, since 1995! Enjoy the Pritchard Family Terrace outdoors when weather permits.

5:30 PM | Stanley Works Center

09.03.21

"The Tribulations"

10.01.21

Brian MacDonald Group

11.05.21

Mass-Conn Fusion

12.03.21

The Cartells!

Face coverings are required for all patrons ages two and up, regardless of vaccination status, while inside the venue. Masks may be removed briefly while eating and drinking. Guests will need to show proof of vaccination to attend events serving food and drinks at NBMAA. See website for details.

Upcoming Music Programs

Live Music Schedule



Sunday Music Series

The NBMAA's longstanding monthly concert series, featuring local & regional performances representing a variety of musical genres.

3:00 PM | Stanley Works Center

09.12.21

Steve Nystrup Trio:
Beatles & Blues

10.10.21

Zephyr Trio presents:
Time & Memory

11.14.21

Choir Matrix Women's
Ensemble & Women of
Concinnity

12.12.21

Sunday Sonatas
for Cello & Piano

Walnut Hill Jazz Series

Presented in partnership with the Hartford Jazz Society, our annual jazz series is made possible by generous funding from the *William T. Sloper Trust for Andrew J. Sloper Musical Fund, Bank of America, N.A., Trustee*

6:30 PM | Stanley Works Center

09.22.21

Daniel Bennett Group

10.13.21

Andrew Wilcox Sextet

11.17.21

Michael Carabello
Quartet

12.15.21

Joe Carter Quartet

PREMIER MEMBERS

Grace Judd Landers Society

Benefactor

as of August 1, 2021

Mr. and Mrs. Charles J. Hamm

John Butler Talcott Society

Chair

Michael and Dona V. Cassella

Mrs. Rhoda L. Chase

Ms. Cheryl A. Chase and Mr. Stuart Bear

Anita and Anthony Ferrante

Mr. Bradford Korder

Melinda and Paul Sullivan

Director

Jay and Allison Bombara

Mr. and Mrs. Kenneth L. Boudreau

Mrs. Beverly Buckner-Baker

Mr. and Mrs. Russell E. Burke III

Dr. and Mrs. Peter D. Byeff

Ms. Kay Knight Clarke

Jamie Hait Cohen and Isaac Cohen

Dr. and Mrs. Martin Cooper

Mr. John N. Howard and Ms. Wendy Kirkland

Mr. and Mrs. David G. Jepson

Dr. and Mrs. Richard L. Judd

Dr. Timothy P. McLaughlin and Dr. Marian Kellner

Mr. Grant Johnson and Ms. Madeleine Rudin

Thomas and Filomena Soyster

Dr. Susan G. Warner

Mr. and Mrs. Steve J. Weiss

Dr. and Mrs. Peter Yu

Leader

Atty. Kenneth J. Carifa and Mr. Mark S. Garavel

Mr. and Mrs. Arnold L. Chase

Mr. and Mrs. Brendan T. Conry

Ms. Marie Dudley

Dr. and Mrs. Robert L. Fisher

Mr. Thomas C. Flanigan and Mr. Jonathan E. Stone

Mr. Neal B. Freuden and Ms. Andrea F. Levy

Mr. and Mrs. Howard A. Fromson

Mr. and Mrs. Tony Hulme

Mr. and Mrs. Samuel Huntington III

Mr. and Mrs. Jonathan Jarvis

Mr. and Mrs. John M. Jezowski

Dr. and Mrs. Theodore H. Johnson

Mr. Gary W. Knoble and Mr. Robert A. Black

Mrs. Margaret W. Lawson

Dr. and Mrs. David A. Lund

Ms. Michele Parrotta and Ms. Lesley Skenderian

Mr. and Mrs. John R. Rathgeber

Todd and Marenda Stitzer

Mr. and Mrs. Samuel D. Stout

W. Casey and Kathryn West

American Art Circle

Mr. Michael Bombara and Mr. Alejandro Arce Cerda

Ms. Maria Buckley and Mr. John Reilly

Dr. Cliff W. Wagner and Ms. Kimberly C. Burris

Karen and John Byrne

Drs. Alex and Marbelia Cech

Mr. and Mrs. John Chapman

Mr. and Mrs. Halsey M. Cook

Mrs. Thomas R. Cox, III

Mr. and Mrs. Jack Czertak

Mrs. Ruth Ann C. Davis

Mr. John E. Dillaway and Ms. Jessica O'Brien

Mr. and Mrs. John E. Downes III

Ms. Mary Jane Dunn

Mr. and Mrs. Karl Fleischmann

Mr. and Mrs. Jerry Franklin

Ms. Hilary Frye

Mr. and Mrs. Robert B. Goldfarb

Mr. and Mrs. Pierre Guertin

Mrs. Elaine M. Hobart

Mrs. Jean Holden

Mrs. MayBeth Hughes and Mr. Keith Hughes

Mr. and Mrs. Charles C. Kingsley

Mrs. Kathleen Krackowsky

Dr. and Mrs. Charles N. Leach, Jr.

Dr. and Mrs. Michael S. Levine

Mr. and Mrs. Coleman B. Levy

Mrs. Carol LeWitt

Adlyn and Ted Loewenthal

Mr. and Mrs. John S. Manning

Mr. and Mrs. Harry N. Mazadoorian

Dr. and Mrs. M. S. Miller

Mr. and Mrs. Stephen Milliken

Mr. Thomas F. O'Neil III and Ms. Nancy D. O'Neil

Mr. and Mrs. Joseph Orsene

Mrs. Margaret Sweetland Patricelli

Mr. and Mrs. Paul B. Penney

Mr. and Mrs. John E. Reynolds

Mr. and Mrs. René Rosado

Dr. and Mrs. Andrew L. Salner

Mrs. Mary T. Sargent

Mr. and Mrs. Theodore Sergi

Mr. and Mrs. Keith Stevenson

Mr. and Mrs. Richard Tedder

Mr. Albert Tomasso

Ms. Martha G. Trask

Mr. and Mrs. William Watson

Mr. Roy H. Wiseman and Ms. Lisa C. Kugelman

Dr. and Mrs. Thomas J. Zaccheo, M.D.

NEW BRITAIN MUSEUM OF AMERICAN ART
56 LEXINGTON STREET, NEW BRITAIN, CT
(860) 229-0257 | WWW.NBMAA.ORG



NON-PROFIT ORG.
U.S. POSTAGE
PAID
PERMIT NO. 887
NEW BRITAIN, CT



**Shop *Strict Beauty: Sol LeWitt Prints* and
printmaking merchandise in person at the Museum
Store or online at nbmaashop.com.**



GENERAL ADMISSION

\$15 adults
\$12 for Seniors
Children under 18 free
Members FREE
Thursday admission is \$5
after 5 every week.

MUSEUM HOURS

Monday: CLOSED
Tuesday: CLOSED
Wednesday-Sunday: 10
a.m. - 5 p.m.
Thursday: 10 a.m.-8 p.m.

SATURDAY ADMISSION

Free from 10 a.m. to noon
thanks to support from
the American Savings
Foundation.

MUSEUM CAFE

Wednesday-Sunday
9:30 a.m - 2 p.m. featuring
local New Britain fare.

ACCESSIBILITY

Please inquire at the Front
Desk for any assistance
you may require. We are
wheelchair accessible
and have two wheelchairs
available free of charge.

ON THE WEB

www.nbmaa.org
facebook.com/nbmaa
twitter.com/nbmaa
instagram.com/nbmaa56